

SHOALHAVEN HIGH SCHOOL



AIMING HIGHER

PRELIMINARY YEAR CURRICULUM 2021

CONTENTS

Key Elements	4
Organisation of Courses	5
Types of Courses	7
Advice	8
Distance Education Courses	9
Career Based Learning	10

SUBJECT AREAS

· English	11
· Mathematics	17
· Science	22
· Technological & Applied Studies (TAS)	31
· Languages	41
· Human Society and its Environments (HSIE)	43
· Creative & Performing Arts (CAPA)	52
· Physical Development/Health/Physical Education (PDHPE)	59

VOCATIONAL EDUCATION AND TRAINING COURSES

· VET Courses offered by Shoalhaven High School	62
· Frequently Asked Questions about VET courses	74
· Externally Delivered Vocational Education Courses	76

LIFE SKILLS COURSES	84
----------------------------	-----------

THE KEY ELEMENTS IN CHOOSING THE BEST COMBINATION OF SUBJECTS.

Your selection of courses for the senior years is an important one and should only be made after considering the following points:

Your *ABILITY*

Be realistic about yourself. Build on your strengths. If you know you are good in a particular area, select subjects which develop your strengths and enable you to go on achieving well.

Your *INTERESTS*

You should choose courses you are interested in and/or those which may relate to your career choice.

Your *CAREER HOPES*

You don't need to know exactly what you wish to do, but you should have a general idea of those careers which interest you most, ie; your subject choice should be connected to your long term plan.

Courses of Study at Shoalhaven High School

Option A: Hoping to go to university? You will need to select an ATAR pattern of study. You will graduate with an HSC and an ATAR. See pages 6-7.

Option B: Need an HSC, but are not considering university? You will need to select the HSC pattern of study. You will graduate with an HSC. See pages 6-7.

Option C: Seeking to accelerate your transition to the workforce? You should consider a Career Based Learning program of study. See page 10.

Further Education and Training and Credit Transfer to TAFE

If you do not intend going on to study at university, there are advantages in selecting subjects from the Vocational Education Pathway in your HSC.

Credit transfer to TAFE Courses and other training providers are possible with some subjects. At the same time you will be able to study at school and complete “on the job training” in the workplace during school time.

University or Tertiary Requirements

If you are capable of further study at university, you must look carefully at the university requirements of the courses you may wish to study after the HSC.

The requirements for university courses vary, you must be sure you have accurate information.

Be sure to select preliminary courses which will lead to a pattern of courses in the HSC year which will qualify you for an Australian Tertiary Admissions Rank (ATAR). An ATAR is required for a position at a university.

ORGANISATION OF COURSES IN THE SENIOR SCHOOL

PRELIMINARY YEAR

Commences Term 1 and finishes at the end of Term 3 of Year 11

HSC YEAR

Commences in Term 4 of Year 11 and study continues to Term 4 of Year 12

Units and Marks

The senior curriculum is organised on the basis of units of study.

Most courses are TWO units and correspond to approximately NINE periods per cycle and are marked out of 100.

ONE unit courses have approximately FOUR periods per cycle and are marked out of 50.

Extension Courses:

Extension study is available in a number of subjects.

Extension Courses build on the content of the 2 Unit Course and carry an additional value of 1 Unit. Selecting three (3) units is a way to study a course in which you excel.

The only Extension Courses available at Preliminary level are English and Mathematics.

Further extension courses are available for your HSC year after success in the 2 Unit Preliminary subject. HSC Extension Courses are available in English, Mathematics, History and Music.

Additional 4 unit extension courses are possible in the subjects of English and Mathematics.

What courses do I have to study to get a HSC?

- at least 2 units of English
- a minimum of 12 Preliminary units
- a minimum of 10 HSC units
- at least three x 2 unit courses including English
- at least six Board Developed units
- at least four subjects
- a maximum of six units of Science

How long can it take to complete the HSC requirements?

You have up to five years starting from your first attempt at a HSC examination to complete all HSC requirements.

If you take longer than two years to complete HSC requirements you are described as *accumulating* your HSC. The HSC is now more flexible and enables you to follow a number of different pathways to gain the HSC.

You may for example complete your HSC in -

- Two years, by following the traditional pattern of 12 units in Preliminary Year and [at least] 10 units in HSC Year
- Three years, by repeating one or more courses and re-sitting for the HSC exam in those courses in the third year
- Three years, by accumulating Preliminary Courses over the first and second years and HSC Courses over the second and third year

These are examples only. There are a large number of possible pathways a student can now take to gain the HSC.

If you are interested in accumulating your HSC - see your Year Adviser or Deputy Principal.

TYPES OF COURSES

Board Developed Courses

These are courses written by NESA which have an external HSC examination. Board Developed Courses can contribute towards the calculation of the Universities Index or Australian Tertiary Admission Rank [ATAR].

Board Endorsed Courses:

NESA provides outlines of the most popular courses and these are made available to all schools. They may be studied as 1 or 2 units and as Preliminary and/or HSC Courses. Board Endorsed Courses DO NOT contribute towards the calculation of the Australian Tertiary Admission Rank [ATAR].

Externally Delivered Vocational Education and Training courses (EVET)

There are two types of VET Courses: studied at school or through an external provider.

These courses allow you to gain both HSC qualifications and Australian Qualifications Framework [AQF] accreditation.

The AQF qualifications are recognised by industry and employers throughout Australia. Some of these courses require you to spend a minimum number of hours in the workplace.

Students can choose to do an examination at the end of these courses and have it count towards your ATAR. These subjects are marked ATAR option.

Contact your careers adviser about courses that may be studied. Please note, there are no guarantees all courses will run.

Enrolment in these courses takes place early next year. However, expressions of interest are due by September 4, 2020.

ADVICE

Rules and Regulations:

The NSW Educational Standards Authority (NESA) sets down a number of rules designed to ensure the process is fair for all students across the State. Senior students need to understand these formal requirements. These include permissible combination of subjects, the nature and weighting of assessments and expectations about your approach to your studies. At the commencement of your Preliminary Course you will receive a separate Assessment Booklet. Your Year Adviser, or Deputy Principal will be able to advise you as to how best to understand the requirements of these rules.

Who should I talk to for subject specific advice?

It is up to you really. Students who have previously completed that subject are a good starting point. Teachers who have taught you previously are also a good source of personalised advice.

The relevant Head Teacher has comprehensive knowledge of the various subjects under their management.

· English	Ms L Bailey
· Mathematics	Mr I Woods
· Sciences, Agriculture	Mr C Hunter
· Geography, Business Studies, Society & Culture, Legal Studies, Modern/Ancient History, Business Services, Aboriginal Studies,	Ms J Forbes
· Industrial Technology Metal or Wood, Multi-media, Engineering Studies, Construction	Mr A Smith
· Information Processes Technology, Software, Design & Development,	Mr A Smith
· Visual Arts, Visual Design, Ceramics	
· Food, Textiles Technology, Exploring Early Childhood, Hospitality	Mrs J Lloyd
· PD/Health/PE; Sport, Leisure & Recreation, Sports Coaching	Mr E Fakhoury
· Music	Mr E Fakhoury
· EVET (courses delivered externally)	Mrs S Rosskelly
· VET (courses delivered internally)	Mrs J Lloyd
· Deputy Principal	Mr M Dolby

It may still be possible for students to study a course not listed in this handbook if they are motivated. Talk to Mr Dolby about the possibility of undertaking a subject by Distance Education.

DISTANCE EDUCATION COURSES:

These are correspondence courses which are sometimes an option for students wishing to study a particular subject which for some reason **is not able to be offered by the school**.

Students are not able to simply access a Distance Education course unless a sound reason is provided - they are not to be regarded as a normal elective option.

Students can achieve excellent results after following a Distance Education program, and gain substantially from their studies. It would be wise to talk to someone who has studied or is in the process of studying a course via Distance Education before considering the option yourself.

Distance Education Courses largely involve a centre such as Finigan School of Distance Education in Queanbeyan supplying work to students on a weekly basis, which students then send back to the centre for marking.

Often face-to-face sessions or teleconferences are organised so that you have direct contact with your teacher.

Several factors need to be considered before the decision is reached to apply for such a course. These include:

1. You could be working in isolation with no one else at school following the same course.
2. You need to be self-motivated as your learning has to be more self-directed. The work is supplied for you and then it is largely your responsibility to complete it on time. It can be easy to fall behind in your work if the class time you have is not used wisely.
3. You work without the normal classroom interaction, which is hard for some students.
4. Whilst there will be staff at school who are ready and willing to assist you, you will not necessarily have automatic and immediate access to a teacher if a problem arises.

If you are in a position where you need to consider the option of a Distance Education Course, please see Mr Dolby, Deputy Principal.

CAREER BASED LEARNING

In 2021, a limited number of students will have the opportunity to participate in a Career Based Learning program of study in Year 11.

This program of study has been specially designed to accelerate the career prospects of participants.

Three possible strands of study may be available (depending on the number of students who select each strand). They are:-

- Hospitality Strand
- Construction Strand
- Active Strand

For example:

Hospitality Strand	Construction Strand	Active Strand
English Studies Standard Maths Skills for Work (VET) Hospitality (VET) Community and Family Studies 1 other subject (could be EVET)	English Studies Standard Maths Skills for Work (VET) Construction (VET) Industrial Technology (Wood or Metal) 1 other subject (could be EVET)	English Studies Standard Maths Skills for Work (VET) Sport, Leisure, Recreation (SLR) Another high interest subject 1 other subject (could be EVET Outdoor Recreation)

Note: This program is a NON-HSC program of study.

English



ENGLISH STUDIES 2 UNIT

What will I do?	This course is designed to support students in developing proficiency in English to enhance all aspects of their lives. It offers students the chance to study a diverse range of approaches to texts, and develop better individual and collaborative learning skills. It offers skills to help students with their personal and vocational lives.	<div>ATAR</div> <div>ENGLISH</div> <div>NESA Endorsed Course –</div>
How am I assessed?	A range of assessments are completed during the year, using a variety of skills. Completion of a work portfolio is compulsory, based on work completed throughout the year in all the modules studied in class. <u>All</u> class work must be submitted for marking to meet outcomes.	
Where can it take me?	<p>To workplaces and careers that do not require an ATAR. It may provide good insights into preparation for work opportunities/apprenticeships in the broader community.</p> <p>Students who choose to sit the optional external HSC examination in English Studies receive an ATAR and can go on to university study in their preferred field.</p>	
Who should do it?	Students who have gained a Grade D or lower in their Year 10 report and who are looking to leave school at 17, are not interested in an ATAR, or wish to take up a work placement or apprenticeship and need to improve their English skills should consider this course.	
What will I need?	A folder which allows students to detach work for marking, dictionary/thesaurus, homework diary, stationery, USB, assessment schedule. Small exercise books are not acceptable and students will be asked to replace them.	
HSC notes	Students may sit an optional external HSC examination if they wish to achieve an ATAR.	

ENGLISH STANDARD 2 UNIT

What will I do?	In the Year 11 Standard course students studied the Common Module - Reading to Write: Transition to Senior English, Module A: Contemporary Possibilities and Module B: Close Study of Literature.	ATAR
How am I assessed?	Students are assessed through a range of tasks including an examination and a multimodal presentation.	
Where can it take me?	To a range of tertiary institutions which require English Standard for entry into specific degrees. The course aims to improve the student's language skills and enhance literary knowledge.	ENGLISH
Who should do it?	Students who gain a C or lower grade in their Year 10 report, or who know that the English Standard is a prerequisite for their choice of further study, should consider this course.	
What will I need?	A folder which allows students to detach work for marking, a dictionary, homework diary, stationery, USB, assessment schedule. Small exercise books are <u>not</u> acceptable, and students will be asked to replace them.	NESA Developed Course –
HSC notes	In the HSC students will study a Common Module and three additional modules. They will complete a series of in school assessments and sit for the formal HSC examination in this subject.	

ENGLISH ADVANCED 2 UNIT

What will I do?	<p>In the Year 11 Advanced course students studied the Common Module - Reading to Write: Transition to Senior English, Module A: Narratives that Shape our World and Module B: Critical Study of Literature.</p> <p>High level language skills are aspired to in this course. It is a challenging and demanding course. Some pre 20th Century texts are integrated into set modules, as stimulus for study.</p>	<div>ATAR</div> <div>ENGLISH</div> <div>—</div> <div>NESA Developed Course</div>
How am I assessed?	Students are assessed through a range of tasks including an examination and a multimodal presentation.	
Where can it take me?	To tertiary institutions which require English Advanced for entry into specific degrees. Students who wish to pursue further study in the Humanities/Arts at university would find this course useful.	
Who should do it?	<p>Students who have gained a Grade A or B in English in their Year 10 report should consider this course. Students who require English Advanced as a prerequisite for further study should also consider the course.</p> <p><u>Strong</u> writing and reading skills are a prerequisite for this course. Students who do not achieve these results are advised not to do Advanced English. It is suggested that students discuss this choice with their teacher or the Head Teacher.</p>	
What will I need?	A folder which allows students to detach work for marking, dictionary/thesaurus, homework diary, stationery, USB, assessment schedule. Small exercise books are <u>not</u> acceptable and students will be asked to replace them.	
HSC notes	In the HSC students will study a Common Module and three additional modules. They will complete a series of in school assessments and sit for the formal HSC examination in this subject.	

ENGLISH EXTENSION 1

1 UNIT

What will I do?	Extension 1 begins in Preliminary Year. Students study the Module: Texts, Culture and Value and then select one elective for the HSC from the modules offered.	<div>ATAR</div> <div>ENGLISH</div> <div>NESA Developed Course –</div>
How am I assessed?	In Extension 1, students will be assessed through three tasks including a multimodal presentation on the Independent Research Project, and examination.	
Where can it take me?	This course is designed for those students wanting to do Humanities and/or Arts based degrees including an English major at University.	
Who should do it?	These courses are for academic students with well-developed writing skills and a strong interest in literature. A rigorous selection process will be imposed. Only students who gain <u>Grade A</u> in their Year 10 report should consider this course.	
What will I need?	A folder which allows students to detach work for marking, dictionary/thesaurus, homework diary, stationery, USB, assessment schedule. Small exercise books are not acceptable and students will be asked to replace them.	
HSC notes	In Extension 1, students study the common module: Literary Worlds with one elective option. Students will complete a series of formal assessment tasks and complete the HSC examination in Extension 1.	

ENGLISH EXTENSION 2

1 UNIT (Year 12 Only)

What will I do?	<p>Extension 1 begins in Preliminary Year. Students study the Module: Texts, Culture and Value and then select one elective for the HSC from the modules offered.</p> <p>Extension 2 is undertaken only in HSC Year and a Major Work AND Reflection Statement must be completed.</p>	<div>ATAR</div> <div>ENGLISH</div> <div>NESA Developed Course –</div>
How am I assessed?	In Extension 2 students are assessed through a ‘viva voce’ [interview and discussion] and progress reports on the Major Work.	
Where can it take me?	This course is designed for those students wanting to do Humanities and/or Arts based degrees including an English major at University.	
Who should do it?	These courses are for academic students with well-developed writing skills and a strong interest in literature. A rigorous selection process will be imposed. Only students who gain <u>Grade A</u> in their Year 10 report should consider this course.	
What will I need?	<p>A folder which allows students to detach work for marking, dictionary/thesaurus, homework diary, stationery, USB, assessment schedule. Small exercise books are not acceptable and students will be asked to replace them.</p> <p>Extension 2 requires a Major Work Journal.</p>	
HSC notes	In Extension 2, students submit their Major Work and Reflection Statement for external marking. They must also complete and submit a Major Work Journal.	

MATHEMATICS



Mathematics forms an important part of a well-rounded education. Although not compulsory in Years 11 and 12, the study of mathematics builds logical, problem-solving capacity and analytical thinking skills, applicable in many varied situations and careers.

Shoalhaven High School believes that all students can improve their understanding of mathematics through engagement in an appropriate level of course at Stage 6, commensurate with their current capabilities.

Students are advised to choose a mathematics course that is appropriate to their interests and current achievement level, but which also challenges them to gain a deeper understanding and hence to improve their level of mastery.

The Mathematics Standard course builds on content learned in Years 7 to 10 and is recommended for students who are not planning to continue in STEM-based subjects at University.

Mathematics Advanced and Mathematics Extension 1 are incrementally challenging 'calculus courses' involving a high level of algebraic manipulation, respectively building on knowledge and skills developed by previous levels. Students hoping to study Science, Engineering, Computer Science or Mathematics-based courses should take these courses.

While, in the past, the General Mathematics and Advanced Mathematics courses were graded separately in the HSC and there appeared to be an uneven overlap between higher grades in the General and lower grades in the Advanced, the new Stage 6 courses now have common content across all four Stage 6 courses which allows for a fair assessment of relative HSC standards. Students are no longer advised to take a lower standard course in order to maximise their ATAR.

The content of all three courses is specific but all are interwoven with underlying mathematical concepts and skills. Studying a higher level of mathematics can enhance mastery of a lower level.

If students are unsure whether they will succeed with a particular level of mathematics, **they are advised to start in the higher-level course**; even if they do not complete this, they may well benefit from the experience and achieve a better result in the lower level course. However, please discuss your eligibility with your teacher before making a choice.

MATHEMATICS STANDARD 2 UNIT

What will I do?	This course is designed to allow more time for students to consolidate their understanding of the applied Mathematical topics studied in Years 7 to 10. They will do more Financial Mathematics, Statistics, Probability and Algebraic Modelling. A new topic, Networks, will also be introduced.	<div>ATAR</div> <div>MATHEMATICS</div> <div>NESA Developed Course –</div>
How am I assessed?	<p>There will two examination style tasks and a take-home assessment to complete in Year 11.</p> <p>In Year 12 there will be two assignments and two exams, including the final in-school examination.</p> <p>There will be around 20-25% of content in the final HSC which will be common to both the Standard and Advanced examinations. This is to allow more accurate scaling of Mathematics candidates in the ATAR. 50% of your mark in both Year 11 and Year 12 will be on completion of coursework.</p>	
Where can it take me?	<p>The course is designed for students who <u>do not</u> want to study Mathematics after leaving school. However, the skills developed will be useful in many careers, and TAFE Courses.</p> <p>While university courses do not yet preclude students who take Standard Mathematics, more courses are now specifying that Advanced Mathematics is preferred as an entry pre-requisite.</p>	
Who should do it?	<u>Only</u> students who have satisfactorily completed Mathematics in Year 10 should consider this course. The curriculum has been designed with the assumption that all students will have successfully completed Stages 5.1 and the majority of Stage 5.2.	
What will I need?	<p>A calculator and A4 grid book. A textbook will be provided and will be required for every lesson.</p> <p>A commitment to improve your understanding of Mathematical processes through hard work in class and extra-curricular study.</p>	
HSC notes		

MATHEMATICS ADVANCED 2 UNIT

What will I do?	Students are extended across a range the topics covered in the Years 7 to 10, concentrating heavily on applying algebraic techniques in a variety of contexts, most noticeably in the Calculus strand. The Advanced course now also contains Statistics content, included to assist students studying research based topics at university.	<div>ATAR</div> <div>MATHEMATICS</div> <div>NESA Developed Course –</div>
How am I assessed?	<p>There will two examination style tasks and a take-home assessment to complete in Year 11.</p> <p>In Year 12 there will be two assignments and two exams, including the final in-school examination.</p> <p>There will be around 20-25% of content in the final HSC which will be common to both the Standard and Advanced examinations. This is to allow more accurate scaling of Mathematics candidates in the ATAR.</p> <p>50% of your mark in both Year 11 and Year 12 will be on completion of coursework.</p>	
Where can it take me?	All STEM-based subjects at university level will expect candidates to take Advanced Mathematics at minimum, Extension 1 is preferred. However, many other university courses are also starting to specify the Advanced course as a prerequisite due to the training it provides in rigorous and logical thinking and problem-solving.	
Who should do it?	<p>This course is recommended only those who have achieved outcomes from Stage 5.3 in Years 9 and 10. This is generally limited to those students in the top class.</p> <p>Other students wishing to attempt this course will need to work individually to learn several new concepts before the start of the course in Year 11.</p>	
What will I need?	<p>A calculator and A4 grid book. A textbook will be provided and required for every lesson.</p> <p>A commitment to carry this through as dropping to the Standard Course will involve a lot of catch up work. There is currently a general lack of Australian students taking calculus courses, so students who see this course through to completion are already marking themselves out from the rest of their cohort.</p>	
HSC notes	A single three hour examination at HSC.	

MATHEMATICS – EXTENSION 1

1 UNIT

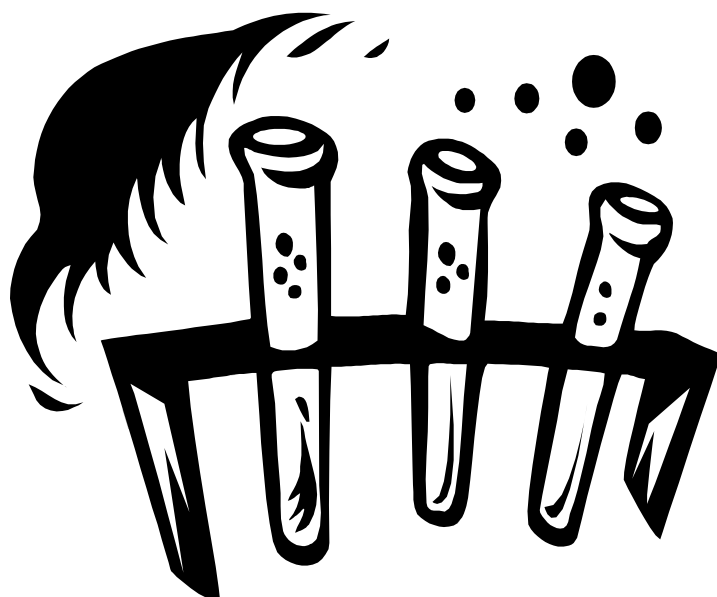
What will I do?	Students will complete the 2 Unit Mathematics Advanced course as well as many new and interesting topics which are calculus-based and require students to apply themselves seriously.	<div>ATAR</div> <div>MATHEMATICS</div> <div>NESA Developed Course –</div>
How am I assessed?	<p>There will two examination style tasks and a take-home assessment to complete in Year 11.</p> <p>In Year 12 there will be two assignments and two exams, including the final in-school examination.</p> <p>50% of your mark in both Year 11 and Year 12 will be on completion of coursework.</p>	
Where can it take me?	<p>Students intending to go to university to study any kind of STEM degree (Science, Technology, Engineering, Mathematics) are strongly advised to include Mathematics Extension 1 in Years 11 and 12 and if possible Mathematics Extension 2 in Year 12.</p> <p>Students aiming to study STEM degrees and degrees which include STEM subjects (such as economics, psychology and commerce), are advised to choose the highest level of mathematics in Years 11 and 12 of which they might be capable.</p>	
Who should do it?	Students who have demonstrated a high level of understanding of the Stage 5.3 Course in Years 9 and 10.	
What will I need?	<p>Lots of enthusiasm and application. The Extension classes will generally not be timetabled during the normal day and students will be expected to commit to two periods per week outside of normal class times. Students will also be expected to allocate appropriate time to the extra reading and practice necessary for adequate understanding of the content.</p> <p>A calculator and A4 exercise book. A textbook will be provided and required for every lesson.</p>	
HSC notes	Extension 1 students will have to sit an additional 2 hour paper as well as the 3-hour Advanced mathematics paper.	

MATHEMATICS – EXTENSION 2

1 UNIT (Year 12 Only)

What will I do?	Students who excel in the Advanced course may consider Extension 2 Mathematics (4 units) in Year 12. The assessment structure is the same (2 by 2), and you will still need to complete all the Advanced and Extension 1 assessments, but you will not need to sit the actual HSC Advanced Paper, sitting the Extension 2 paper instead.	<div>ATAR</div> <div>MATHEMATICS</div> <div>NESA Developed Course –</div>
How am I assessed?	In Year 12 there will be two assignments and two exams, including the final in-school examination.	
Where can it take me?	<p>Students intending to go to university to study any kind of STEM degree (Science, Technology, Engineering, Mathematics) are strongly advised to include Mathematics Extension 1 in Years 11 and 12 and if possible Mathematics Extension 2 in Year 12.</p> <p>Students aiming to study STEM degrees and degrees which include STEM subjects (such as economics, psychology and commerce), are advised to choose the highest level of mathematics in Years 11 and 12 of which they might be capable.</p>	
Who should do it?	Students who perform exceptionally well in Year 11 Extension 1	
What will I need?	<p>Lots of enthusiasm and application. The Extension classes will generally not be timetabled during the normal day and students will be expected to commit to two periods per week outside of normal class times. Students will also be expected to allocate appropriate time to the extra reading and practice necessary for adequate understanding of the content.</p> <p>A calculator and A4 exercise book. A textbook will be provided and required for every lesson.</p>	
HSC notes	Extension 2 students will not have to sit the HSC Advanced Mathematics paper but will still need to complete all components and assessment tasks of the Advanced Mathematics Course.	

SCIENCE



Note: The Science Faculty at SHS offers courses designated by NESA as Science Courses and other courses that are not designated NESA Science courses. A student may study a maximum of three (3) NESA designated Science courses and any number of non-designated courses.

NESA Science Courses (All ATAR)	Not designated as Science by NESA
Biology	Agriculture (ATAR)
Chemistry	Marine Studies (Non-ATAR)
Earth and Environmental Science	Primary Industries (VET)
Investigating Science	
Physics	

BIOLOGY 2 UNIT

What will I do?	Students study topics such as cells, biodiversity, evolution, biotechnology and disease. Students are involved in the theory and practical aspects of the course which include experimental investigations and field work. They use specialised equipment and computers to develop knowledge and skills.	<div>ATAR</div> <div>SCIENCE</div> <div>BOS Developed Course –</div>
How am I assessed?	Practical activities, field work, data analysis, research tasks and exams. No essays.	
Where can it take me?	Complements Geography, Earth & Environmental Science, Sports Science, Art, Physical Development, Health, Nursing, Food Technology and Science related fields.	
Who should do it?	Any student interested in animals, plants or the environment and students considering studying science based subjects at University like Physiotherapy, Nursing, Medicine, Veterinary Science, Marine Biology etc.	
What will I need?	A willingness to develop skills in practical work and computer technology. Good communication skills.	
HSC notes	A depth study is completed in the HSC Course. Practical work occupies at least 40% of the course. You can study up to 6 units of science courses at SHS.	

CHEMISTRY 2 UNIT

What will I do?	Chemistry provides students with an understanding of matter and its interactions. Chemistry is a practical subject where students are involved in activities such as experiments, demonstrations, fieldwork and multi-media experiences.	<div>ATAR</div> <div>SCIENCE</div> <div>NESA Developed Course –</div>
How am I assessed?	Practical activities and exams. No essays.	
Where can it take me?	To science related courses at tertiary level such as medicine and engineering. Chemistry, although not a formal pre-requisite, is an important subject for any student wishing to continue on to any science, medical or engineering based course at university.	
Who should do it?	Students who want to study any Science based course at University like Medicine, Nursing, Physiotherapy and Veterinary Science. Students who have attained substantial achievements in Science and Mathematics in Year 10.	
What will I need?	Skills in mathematics and ability to understand and apply abstract concepts. An interest in Chemistry. 2 Unit Advanced Mathematics is highly recommended.	
HSC notes	Practical work occupies at least 40% of the course. You can study up to 6 units of science courses at SHS.	

EARTH AND ENVIRONMENTAL SCIENCE

2 UNIT

What will I do?	This is a multi-disciplinary Science covering aspects of Environmental Science, Astronomy, Chemistry, Ecology, Physics, Biology and Geology. Technology is an important part of the course and students develop skills in research and scientific investigation. The subject has a strong field study component and there will be several mandatory excursions to develop an understanding of the application of theoretical principles to real world situations.	<div>ATAR</div> <div>SCIENCE</div> <div>NESA Developed Course –</div>
How am I assessed?	Practical activities, designing experiments, assignment tasks, field work, research and exams. No essays.	
Where can it take me?	Into many different fields of Environmental Science such as resource management, ranger work with different levels of government (local, state, federal) and with private organisations, landscape design, town planning. To study Science based courses at TAFE and University. This course complements Geography, Biology, Chemistry and Agriculture.	
Who should do it?	Students interested in the challenges facing our planet, fossils, threatened species, Evolution, Climate Science, Forestry, National Parks, Geology, Resource Management, Mining, Conservation and other Sciences.	
What will I need?	An interest in the environment, good observational skills and an interest in the evolution of the planet you live on and the future challenges it faces.	
HSC notes	A depth study is completed in the HSC Course. Practical work occupies at least 40% of the course. You can study up to 6 units of science courses at SHS.	

INVESTIGATING SCIENCE 2 UNIT

What will I do?	Investigating Science is a multi-disciplinary course that builds on an understanding of some fundamental laws, theories and principles of our scientific world. Students will cover aspects of Biology, Chemistry, Physics and Earth and Environment. The course includes the study of relationships between science, technology and society, with a focus on the scientific method and experimental design.	<div>BOS Developed Course –</div> <div>SCIENCE</div> <div>ATAR</div>
How am I assessed?	Research tasks, practical skills, field work reports, designing and conducting experiments, reports and exams.	
Where can it take me?	The skills and knowledge developed in this course will be applicable in a wide range of future careers. The work covered in the course compliments Geography, Food Technology and PD/H/PE.	
Who should do it?	Students who have an interest in Science. Students interested in further study in nursing, teaching, horticulture and applied sciences.	
What will I need?	Good observation skills and an interest in the world around you.	
HSC notes	A depth study is completed in the HSC Course. Practical work occupies at least 40% of the course. You can study up to 6 units of science courses at SHS.	

PHYSICS 2 UNIT

What will I do?	Physics focuses on investigating natural phenomena and then applying patterns and mathematical principles to explain the behaviour of matter and energy. Motion, electricity, magnetism, astronomy, quantum physics and relativity are covered.	ATAR
How am I assessed?	Practical activities, exams, research tasks	
Where can it take me?	To science related courses at university eg. Medicine, Engineering Sciences, Dentistry, Veterinary Sciences.	
Who should do it?	Physics is a recommended pre-requisite for some science related courses at university like Engineering Sciences.	
What will I need?	<p>Students who have attained substantial achievements in Science and Mathematics in Year 10.</p> <p>The mathematical concepts involved are not extremely difficult, but are often abstract. You must be able to manipulate simple algebraic equations and have confidence in using trigonometry.</p> <p>2 Unit Advanced Mathematics is highly recommended.</p>	
HSC notes	<p>A depth study is completed in the HSC Course.</p> <p>Practical work occupies at least 40% of the course.</p> <p>You can study up to 6 units of science courses at SHS.</p>	NESA Developed Course – SCIENCE

AGRICULTURE 2 UNIT

What will I do?	You will be involved in a course which spends at least 30% of its time on practical related activities developing knowledge and understanding of plant and animal production and marketing.	<div>ATAR</div> <div>SCIENCE</div> <div>NESA Developed Course –</div>
How am I assessed?	Assessment within the school will involve practical reports, research assignments, fieldwork and examinations.	
Where can it take me?	<p>Agriculture based jobs in research, engineering, sales, banking, consultancies, teaching, production, marketing and working with plants, animals and resources on farms, zoos and research centres.</p> <p>Certificate II, III in Agriculture, Horticulture, Primary and Dairy Industries.</p> <p>University study of Agriculture.</p>	
Who should do it?	Any person who has an interest in agriculture or wishes to be employed in any agricultural associated industry. This course is designed for people who are interested in academic study of agriculture.	
What will I need?	An ability to work within a group, and at times be able to work independently on research or elective tasks.	
HSC notes	HSC involves a 2 Unit course of study looking at both Plant and Animal enterprises.	
Subject Fees	There is no up-front fee; however, students should be prepared to pay for a number of field trips during the course. Mandatory field trips will be kept as inexpensive as possible.	

MARINE STUDIES 2 UNIT

What will I do?	Practical water based activities which may include snorkeling, canoeing, surfing, fishing, basic oceanography, marine biology, boat safety, local environment studies and opportunities to gain First Aid qualifications.	NESA Endorsed Course – SCIENCE NON-ATAR
How am I assessed?	Practical activities, model making, field work, research work and exams.	
Where can it take me?	You can gain skills and external qualifications, which may help with employment prospects. You will learn about a variety of careers in the marine industry.	
Who should do it?	This course is designed to meet the needs of students not necessarily pursuing an academic career but may be seeking knowledge and skills for marine industry employment and enjoyment of marine activities.	
What will I need?	<p>A genuine interest in the marine environment. A willingness to be involved in activities which will take you out of the classroom.</p> <p>This course incurs a fee of \$100.00 per year for materials, Some excursion transport and the use of professionals to meet safety guidelines. There may be further cost for special excursions.</p>	
HSC notes	There is no external examination for Content Endorsed Courses.	

PRIMARY INDUSTRIES VET FRAMEWORK 2 UNIT

What will I do?	The purpose of this course is to provide students with an opportunity to develop basic knowledge and skills to be competent in routine tasks in various primary industry settings.	ATAR Option
How am I assessed?	You will be assessed on each unit of competency and the teacher will decide based on appropriate assessment whether you are competent or not yet competent for that unit. There is also an examination for those students using this course for their ATAR.	
Where can it take me?	Students will gain experience that can be applied to a range of contexts including work, study and leisure and will assist them to make informed career choices in Agriculture Industry based jobs.	SCIENCE
Who should do it?	Any person interested in focusing on hands on learning experience. Working with machinery, chemicals, livestock, plants and industry people.	
What will I need?	Enthusiasm, willingness and an interest in livestock and plants.	VET Course –
HSC notes	This subject can be used as part of an ATAR - in this case students must complete the HSC examination.	



TECHNOLOGICAL & APPLIED STUDIES



CONSTRUCTION 2 UNIT

What will I do?	Learn the basics of the Building and Construction Industry. You will develop practical skills through the completion of a number of construction activities and a mandatory 70 Hour Industry Work-placement. Construction activities range from small-scale personal projects through to the management and construction of larger scale group projects.	ATAR option
How am I assessed?	Assignments, class tests, practical work and participation in construction activities. Students may elect to sit the optional HSC examination to gain credit for ATAR.	
Where can it take me?	Students whom achieve competency in the course qualify for Certificate II Construction Pathways, which is a nationally recognised qualification and may count towards any learning you undertake in the future. The course is a potential pathway into a career within the Building & Construction Industry, with the development of skills that possible employers are seeking.	
Who should do it?	Young women and men who are thinking of a career within the Building and Construction Industry. Students who enjoy 'hands-on' or practical work mixed with theory.	TAS
What will I need?	Enthusiasm, commitment and an ability to work without undue supervision. Students must be safety conscious and are required to supply suitable clothing and footwear at school and on work placement. The course incurs a fee of \$30.00 p.a. for materials and equipment.	
HSC notes	This is a Category B subject and will count towards ATAR [if only one Category B subject is studied]. The 70 hour Work Placement is mandatory to pass the Course. The HSC exam is an optional 2 hour written examination, which is held independent of the competency based assessment undertaken during the course. That is, the HSC exam does not affect whether or not you qualify for attaining the Certificate II Construction Pathways.	VET Course –
Location	Shoalhaven High School	

ENGINEERING STUDIES 2 UNIT

What will I do?	Study the fascinating and diverse world of Engineering and the role it plays in shaping our world.	<div>ATAR</div> <div>TAS</div> <div>NESA Developed Course –</div>
How am I assessed?	Individual and group work, tasks and examinations.	
Where can it take me?	Towards an exciting and highly paid career in one of the many fields of Engineering. Australia will always need engineers, especially now with the focus on nation building and infrastructure.	
Who should do it?	Anyone interested in mechanical, electrical, materials, aeronautical, telecommunications, biological, civil, transport, chemical or any of the myriad of engineering fields. Female engineers are highly regarded in Australian industry.	
What will I need?	A dedicated work ethic coupled with strong skills in Science, Mathematics and conceptual thinking. The course incurs a fee of \$24.00 to cover the cost of materials.	
HSC notes	Three hour written examination in HSC Year. Concepts learned in Preliminary Year are assumed knowledge.	

INDUSTRIAL TECHNOLOGY – METAL OR WOOD 2 UNIT

What will I do?	Develop safe working practices with fixed and portable power tools. Develop practical skills working with timber or metal. Develop planning and designing skills. Develop a major project for submission in the HSC.	ATAR
How am I assessed?	Preliminary Course assessed through various practical tasks and exams. HSC assessed through 60% practical [major project] 40% HSC examination.	
Where can it take me?	Careers in the timber or metal industries. Great opportunities exist for skilled workers and pay rates are extremely high due to a shortage of tradesmen and tradeswomen.	TAS
Who should do it?	Students with an interest in a practical course that allows development of a major personal project in metal or wood.	
What will I need?	Safety equipment. This course incurs a fee of \$30.00 to cover the cost of materials used in the Preliminary Course. HSC Course - students supply their own Material plus a fee of \$25.00.	NESA Developed Course –
HSC notes	Major projects generally need to be completed by the end of August.	

INDUSTRIAL TECHNOLOGY – MULTIMEDIA

2 UNIT

What will I do?	Multimedia is a two year elective for Years 11 and 12. If you enjoy creating or want to learn how to create graphics, videos, special effects, web sites, Publishing, Advertisements and Animations you should think about selecting Multimedia.	ATAR
How am I assessed?	Preliminary Course assessed through various practical tasks, set assessment tasks and Examinations. HSC Course is assessed through 60% Major Project and Management Folio and 40% Examination.	
Where can it take me?	Career Path in the Information Technology Industry.	TAS
Who should do it?	Students with an interest in a practical based course that allows for the development of a Major Project in Multimedia.	
What will I need?	Students of IT Multimedia need a willingness to explore the digital world and desire to experiment with different software packages.	NESA Developed Course –
HSC notes	As above.	

SOFTWARE DESIGN AND DEVELOPMENT 2 UNIT

What will I do?	You will learn the skills required to become a computer programmer. This includes the theory of designing effective computer programs to solve real-life problems.	ATAR
How am I assessed?	Through the use of tests, practical work, portfolios, projects and examinations.	
Where can it take me?	Software designers and programmers are one part of a team skilled in either programming and/or software design who work with artists, researchers to develop computer programs. Can lead to credits in TAFE and University related computer courses.	TAS
Who should do it?	Students interested in a career in Computer Science and/or Software Development. Substantial mathematical ability is required. A good grade in Year 10 Advanced Mathematics or a very good grade in Year 10 Intermediate Mathematics is a minimum prerequisite.	
What will I need?	The ability to work independently with a strong commitment to getting the task completed. This course incurs a fee of \$28.00 p.a. to cover the cost of materials. Access to a PC at home is very useful.	NESA Developed Course –
HSC notes	Three hour written examination based on HSC Course, although concepts learned in Preliminary Course are assumed knowledge.	

COMMUNITY AND FAMILY STUDIES

2 UNIT

What will I do?	This course is designed to develop an understanding of the diverse nature and inter-dependence of families and communities, in relation to the changing nature of Australian society with a view to enable students to plan and manage resources effectively.	ATAR
How am I assessed?	Each unit has its own Assessment Task which may include research, oral presentations, reports and examinations. The assessment of the HSC Module Research Methodology, including the Independent Research Project, where students conduct their own research focus on one or more areas of the course content that is of interest to them.	
Where can it take me?	This subject would be relevant for students who are wishing to gain an ATAR and move into the areas of management, sociology, human development, education and resource management. Vocations include Youth Worker, Welfare Worker, Social Worker, Teacher, Nurse.	TAS
Who should do it?	All students who wish to manage any aspect of their life better, who have an interest in people and any vocation connected to dealing with individuals or groups of people. This subject develops research skills that can be used at tertiary level. Ideal for students thinking of going to university.	NESA Developed Course –
What will I need?	Well developed, or an interest in developing research skills would be of benefit as this subject is theoretically based. Folder, plastic sleeves and dividers.	
HSC notes	This is a Category A subject that does attract an ATAR score. Exams rely on extended written responses and the HSC is three hours in duration.	

EXPLORING EARLY CHILDHOOD 2 UNIT

What will I do?	<p>This course explores issues within an early childhood context and considers these in relation to the students, families and the community.</p> <p>Compulsory content involves modules on</p> <ul style="list-style-type: none"> - Pregnancy & Childbirth - Child Growth & Development - Promoting Positive Behaviour <p>There are 14 Elective Modules on topics such as Play, Gender Issues, Children's Literature Health & Safety, Food & Nutrition, Children with Special Needs.</p>	NON-ATAR
How am I assessed?	Ongoing assessment through tests, oral presentations, examinations and practical skills that relate to the course content. Practical skills include creating an educational toy, designing and making nutritious and interesting meals for children of various ages.	
Where can it take me?	Any student who wishes to work with children will find this course very relevant in learning about child development. This can lead into TAFE courses connected to childcare and nanny vocations.	TAS
Who should do it?	This course covers different content to the course studied at TAFE. Students interested in working in the child care industry, teaching, nursing or parenting would all benefit from studying this course. It is also highly useful for people who anticipate becoming parents later in life.	
What will I need?	<p>Folder, plastic sleeves, dividers.</p> <p>A willingness to contribute to class discussions and activities.</p>	NESA Endorsed Course –
HSC notes	There is no external HSC examination in this subject.	

FOOD TECHNOLOGY 2 UNIT

What will I do?	<p>Students will investigate and study:</p> <ul style="list-style-type: none"> • Factors that influence food availability and selection • Safe food handling • Sensory characteristics & functional properties of food • The role of nutrition • The structure of the Australian Food Industry • Food production and processing practices • Food Product Development practices • Contemporary Issues in Nutrition <p>Skills will be developed in:</p> <ul style="list-style-type: none"> • Researching and analysing • Investigating food issues • Food preparation • Designing, preparing and evaluating solutions to food situations. <p>Excursions, experimental work and practical food preparation are an integral part of this course.</p>	ATAR
How am I assessed?	You will be assessed through a range of assessment tasks - experimentation, food preparation, research and analysis and formal examinations.	TAS
Where can it take me?	Food Technology is relevant for all students who require an ATAR to enter university. It can take you into various tertiary courses, TAFE and a multitude of different areas of employment, eg food production, processing, teaching, food technologist, dietician, nutritionist, food stylist, biological scientist.	NESA Developed Course –
Who should do it?	All students who have an interest in food and are working towards an ATAR. It is not necessary to have taken Food Technology as an elective in Years 9 and 10 to take this course.	
What will I need?	An enquiring mind for food, its production and the industry it belongs to. An A4 folder, dividers, plastic sleeves. This course incurs a fee of \$10.00 per term to cover the cost of food/materials.	
HSC notes	This is a 2 Unit Category A subject that does attract an ATAR. HSC exam is 3 hours consisting of multiple choice, structured and extended response questions.	

VET - HOSPITALITY – KITCHEN OPERATIONS

2 UNIT [240 hours]

What will I do?	<p>The Hospitality Industry employs a large number of young people nationally and locally in full-time, part-time and casual positions.</p> <p>70 Hours Work-placement in a hospitality establishment is a mandatory requirement of the course. The industry has an ongoing commitment to training in both customer service and technical areas. The course consists of <i>4 Core Units</i>, many <i>related to customer service</i> covering topics such as - Communication, Teamwork, Hygiene procedures, WH&S procedures and emergency situations, personal presentation. Working effectively with customers from diverse cultures, trends and sustainable practices in the Hospitality Industry.</p> <p><u>Technical Skills and Knowledge</u> are developed in <u>Commercial Cookery</u> where students -</p> <ul style="list-style-type: none"> • Use food preparation equipment • Organise, prepare and present foods including appetisers, salads as well as vegetable, fruit, egg and farinaceous dishes. • Experience different Methods of Cookery • Prepare and serve Espresso Coffee 	ATAR Option
How am I assessed?	<p>There is an assessment package for each unit of work generally including a variety of practical and theory applications. This is a <i>competency based course</i> which means that students work to develop competence, skills and knowledge in each unit of work. Students will be progressively assessed as being <i>Competent</i> or <i>Not Yet Competent</i>.</p>	TAS
Where can it take me?	<p>Students who are assessed as competent in units will receive a Certificate of Attainment and most units towards Certificate II in Hospitality. Accreditation in this course will give you <i>advanced standing</i> in TAFE courses including Tourism. <i>Employment opportunities</i> include resorts, hotels, bed & breakfasts, clubs, restaurants, cafes/coffee shops, bistros, nursing homes, hospitals and catering organisations.</p>	
Who should do it?	<p>Students who want to work in the Hospitality Industry either as a long term career or casual/part time position, and particularly those who would like to commence entry level units whilst at school.</p>	
What will I need?	<p>A chefs uniform with black enclosed shoes and tool box are industry standard and are compulsory for practical classes. Hospitality is a fee attracting course. <i>Students may hire their chef's uniform and tool box from the school for \$60.00 per year</i> and <u>food</u> is supplied at a <u>cost of \$15.00 per term</u>. A work book, folder and dividers are supplied at a cost of \$10.00. A total fee of \$130.00 covers the cost of all Hospitality requirements for Year 11.</p>	VET Course –
HSC notes	<p>This is a Category B subject and will count towards an ATAR score [if only one Category B subject is studied]. The HSC is a 2 hour written Examination which is <i>optional</i> and independent of the competency based assessment undertaken during the course.</p> <p>Hospitality counts as a 2 Unit Course towards your HSC whether you sit the optional exam or not.</p>	

LANGUAGES



GERMAN 2 UNIT

What will I do?	Study the German language. Learn to listen, read, write and communicate on topics such as: meeting people, family and friends, home life, around town - shopping, food, travel and lifestyles, past and present	ATAR
How am I assessed?	Through listening, speaking, reading and writing tasks.	
Where can it take me?	Hospitality/Tourism, Banking, Commerce, International Law, Accounting, Engineering, Red Cross, United Nations, UNICEF, relief and trade organisations, diplomatic services, teaching, working or studying a profession overseas.	LOTE
Who should do it?	Students interested in a career in tourism, hospitality, commerce, trade and international organisations. Students interested in the cultural tradition of Europe.	
What will I need?	Access to a computer and a dictionary.	NESA Developed Course –
HSC notes	Examinations is in two parts: 1. Listening and Speaking, end of Term 3 2. Reading and Writing paper during the HSC Examination period	

Human Society and its Environment



ABORIGINAL STUDIES

2 UNIT

What will I do?	<p><i>The Preliminary Course</i> focuses on Aboriginal peoples' relationship to the land, Aboriginal heritage and identity, and an historical examination of colonialism, racism and prejudice from pre-contact times to the 1960s. The course also includes the development of research and inquiry skills in finding out about national and international communities. Course is open to all students.</p> <p><i>The HSC Course</i> provides for in-depth study of events from the 1960s. During the course, students will consult with the local Aboriginal community to study social justice issues and contemporary expressions of a variety of national and international Indigenous communities. Contemporary expressions of heritage and identity will also be examined. Students apply research and inquiry methods through the completion of a major project.</p>	ATAR
How am I assessed?	It is a skills-based course with a wide variety of assessment methods. 40% comes from a major project finished early in the HSC Year. The choice of project topic is based on student interest.	HSIE
Where can it take me?	This course can give you the edge over others in the job stakes because of the high profile of Aboriginal issues. It is highly recommended for students interested in a career in law, police, nursing, national parks, teaching and health.	NESAs Developed Course –
Who should do it?	This course is suited to all students, both Aboriginal and Non-Aboriginal students, who are interested in any of the careers mentioned above.	
What will I need?	An interest in practical work and working in the community. Also, a folder, plastic sleeves, various materials for your major Project.	
HSC notes	Three hour examination with a variety of question types including source analysis.	

ANCIENT HISTORY 2 UNIT

What will I do?	<p>Students will investigate ancient sites and sources using an evidence-based approach. Case studies may include the city of Palmyra, Homer and the Trojan War and the tomb of Tutankhamun. Students will also examine features of ancient societies such as weapons and warfare, death and funerary customs or art and architecture. Studies of societies could include Europe (Rome, Egypt and Greece), Asia (China and India) or the Americas (Mayans, Aztecs and Incas). In the HSC Year students will study Egypt of the Pharaohs, Pompeii and Herculaneum and Minoan or Spartan Greece.</p> <p>There will also be opportunities to visit museum displays or an archaeological dig.</p>	<div>ATAR</div> <div>HSIE</div> <div>NESA Developed Course –</div>
How am I assessed?	Students are assessed through a series of tasks that can include short answer tests, research assignments, oral tasks, essays and exams. Students in the Preliminary Course will also complete a major research project on a topic of their choice.	
Where can it take me?	The background knowledge and analytical skills learned in history are an asset to any job: in particular, law, libraries, diplomacy, journalism, public relations, creative arts, architecture, work in museums, conserving of art works, archaeology or forensic science.	
Who should do it?	Anyone interested in building skills in analysis, argument and finding out about past cultures and their influence today.	
What will I need?	An inquiring mind and a willingness to learn, a folder and plastic sleeves for submitting work.	
HSC notes	<p>Three hour examination in the HSC.</p> <p>There is a 1 Unit Extension Course available in HSC Year.</p>	

BUSINESS STUDIES 2 UNIT

What will I do?	Business Studies investigates the role, operation and management of businesses within our society. Practical business management is studied including accounting, marketing, employment relations and finance operations. Emphasis is on the practical running of a business.	ATAR
How am I assessed?	Students are assessed through a variety of tasks such as; practical business establishment, media files, research assignments, response to stimulus material and extended responses.	
Where can it take me?	Careers in commerce, finance, accounting, marketing, business management, sports management, human resources, retail, logistics and a good course for students who are interested in being self-employed.	HSIE
Who should do it?	Students who are interested in a course on business management, and those who are interested in careers in business management, finance marketing and accounting and those who want a greater knowledge of the world of business employment and production.	NESA Developed Course –
What will I need?	An interest in the subject, the ability to get tasks completed and willingness to investigate new issues. Basic writing and mathematical skills.	
HSC notes	HSC examination is based on multiple choice questions, short answers, business reports and extended response using case studies and stimulus information.	

GEOGRAPHY 2 UNIT

What will I do?	<p><i>The Preliminary Course</i> draws on contemporary developments in biophysical and human geography and refines students' knowledge and understanding about the spatial and ecological dimensions of geography. It uses enquiry methodologies to investigate the unique characteristics of our world through fieldwork, mastery of geographical skills and the study of contemporary geographical issues.</p> <p><i>The HSC Course</i> enables students to understand and appreciate geographical perspectives about the contemporary world. It focuses on three areas of study: Ecosystems at Risk; Urban Places; and People and Economic Activity.</p>	<div>ATAR</div> <div>HSIE</div> <div>NESA Developed Course –</div>
How am I assessed?	Through examinations, fieldwork reports, assignments and a Senior Geography Project in Preliminary Course - a major study of an area of your choosing.	
Where can it take me?	Geography is a practical subject dealing with both natural and human environments. Caring for the environment is a rapidly expanding area of employment. Geography can lead to employment with aid agencies, defence, town planning, construction, national parks, politics and journalism.	
Who should do it?	Geography is relevant for students seeking tertiary education, but also caters for students not going on to university. Students with an interest in the world around them - empathy of different cultures, people and the environment.	
What will I need?	Basic writing and map reading equipment [compass, ruler etc].	
HSC notes	The 2 Unit HSC exam is made up of skills, short answer and extended response questions.	

HISTORY EXTENSION

1 UNIT (Year 12 Only)

What will I do?	<p>History Extension provides students with opportunities to examine the way history is constructed and the role of historians. Students investigate the nature of history and changing approaches to its construction through sampling the works of various writers, historians and others involved in the practice of history. Students apply their understanding to undertake an individual investigative project, focusing on an area of changing historical interpretation.</p> <p>The course comprises two sections: Constructing History and History Project</p> <p>Key questions are:</p> <p>Who are historians? What are the purposes of history? How has history been constructed, recorded and presented over time? Why have approaches to history changed over time?</p> <p>Students develop their understanding of significant historiographical ideas and methodologies by exploring one case study, such as The Crusades.</p>	<div>ATAR</div> <div>HSIE</div> <div>NESA Developed Course –</div>
How am I assessed?	Students are assessed through a series of tasks that can include short answer tests, research assignments, oral tasks, essays and exams. Students will undertake an individual investigative project, focusing on an area of changing historical interpretation.	
Where can it take me?	It can take you into jobs such as being an archaeologist, museum curator, research officer, historian, cultural heritage officer, anthropologist and sociologist.	
Who should do it?	Passionate students of history who are interested in exploring areas of their own personal interest.	
What will I need?	An inquiring mind and a willingness to learn and general stationery.	
HSC notes	The History Extension course is available in the HSC year only. The HSC examination is 2 hours long.	

LEGAL STUDIES 2 UNIT

What will I do?	Over the two years you will study the development of the Australian Legal System by examining legal principles and processes in relation to: Crime, Human Rights, Environmental Protection, Indigenous Peoples and family.	ATAR
How am I assessed?	Students are assessed through a variety of tasks such as media files, tests, research assignments, essays and response to stimulus material.	
Where can it take me?	To a level of understanding of the legal system allowing you to participate effectively in society. It will also allow support in accessing tertiary courses in the law and legal careers. Additionally, into careers such as the police force, legal system including administration, defence force, corrective services, local council, and counselling.	HSIE
Who should do it?	Students who want to prepare for everyday life as responsible citizens. Students who have an interest in current social, legal, and political issues.	
What will I need?	Effective writing, research, listening/focus and enquiry skills. Also, a folder which allows students to detach work for marking.	NESA Developed Course –
HSC notes	The HSC examination consists of a three hour paper with 35% in multiple choice and short answer and 65% in extended responses.	

ATAR

HSIE

NESA Developed Course –

MODERN HISTORY 2 UNIT

What will I do?	<p>Students will investigate key people and events of the 19th and 20th Century.</p> <p>The Preliminary Core study looks at topics such as the American Civil War, Apartheid, the Cuban Revolution and WWI.</p> <p>In the HSC year students will study topics such as Power and Authority, Conflict in the Pacific and USA 1919-1941 & American Civil Rights.</p>	<p style="writing-mode: vertical-rl; transform: rotate(180deg);">ATAR</p> <p style="writing-mode: vertical-rl; transform: rotate(180deg);">HSIE</p> <p style="writing-mode: vertical-rl; transform: rotate(180deg);">NESAs Developed Course –</p>
How am I assessed?	Through a series of tasks that can include; short answer tests, research assignments, oral tasks, essays and exams. In the Preliminary Course students will also complete a major research project on a topic of their choice.	
Where can it take me?	The background knowledge and analytical skills learned in History are an asset to any job; in particular, law, ADFA, social work, psychology, journalism, public relations, teaching or the police force.	
Who should do it?	Anyone interested in learning a set of skills and body of knowledge that will equip them for tackling some of the issues occurring in the world today.	
What will I need?	An inquiring mind and a willingness to learn. Folder and plastic sleeves for handing in work.	
HSC notes	<p>Three hour examination in HSC.</p> <p>There is a 1 Unit Extension Course available in HSC Year.</p>	

SOCIETY AND CULTURE 2 UNIT

What will I do?	<p>Society and Culture provides students the opportunity to ask and answer questions regarding both themselves and society around them. The course aims to offer insight and explanation into the current social environment and provides students the opportunity to learn to navigate the world.</p> <p>The <i>Preliminary Course</i> focuses on understanding course concepts, the development of personal and social identity and the exploration of intercultural communication. The <i>HSC Course</i> examines social and cultural continuity and change, popular culture and the role of conformity and non-conformity within society.</p>	<div>ATAR</div> <div>HSIE</div> <div>NESA Developed Course –</div>
How am I assessed?	Students are assessed through research assignments and in-class assessment tasks – allowing room for creative and reflective expression, formal examinations and the Personal Interest Project (PIP) in the HSC year.	
Where can it take me?	Careers dealing with people or positions of leadership. It is a subject that allows you to understand the world around you so it can assist in nearly all work places. Specifically, social work, education, government jobs, public relations, medical, law and psychology based positions. It also provides excellent preparation for university through the creation of the PIP.	
Who should do it?	Anyone who questions the ordinary or would like to understand human behaviours and interaction. Those who like to challenge and discuss ideas and get involved in the world around them.	
What will I need?	Curiosity, an open mind and a sense of humour. An organized approach to your studies where you can easily submit work for marking. Use of technology for the completion of the PIP.	
HSC notes	<p>HSC Exam worth 60% of HSC mark - Multiple choice, short answers and extended responses – 2 hours.</p> <p>PIP worth 40% of HSC mark – This project is finished by term 3 of the HSC Year. The choice of project topic is based on student interest.</p>	

Creative & Performing Arts



CERAMICS 2 UNIT

What will I do?	The Ceramics Course covers different modules starting with an introduction to ceramics and leads to more advanced projects. Using <u>clay</u> you will experience hand building, casting, moulds and sculptural pieces using different surface treatments and glazing methods to produce individual works of art. Functional - bowls, platters and non-functional i.e. sculptural & decorative pieces will be made throughout the course.	<div style="writing-mode: vertical-rl; transform: rotate(180deg);"> NESA Endorsed Course – CAPA NON ATAR </div>
How am I assessed?	70% of this course is based on practical tasks such as completed works in a variety of methods, experiments, sketches and notes in your sketch book. 30% is based on Critical and Historical Study which can take the form of research assignments, oral reports etc and one formal exam.	
Where can it take me?	The aim of this course is to encourage you to develop an individual means of expression and technical expertise in ceramics which is a reflection of your interests, skills and capabilities.	
Who should do it?	All students are eligible to take this course. This is particularly relevant to those students who enjoy working with clay to create three dimensional forms and objects.	
What will I need?	There is a course fee of \$60.00 p.a. for each year of the Course and each student will be required to have a sketch-book.	
HSC notes	There is no external examination of students in Stage 6 Board Endorsed Courses. This is a 2 Unit Board Endorsed Course that is offered for the Preliminary and HSC years.	

DRAMA 2 UNIT

What will I do?	Study the world through enactment exploring many art forms and expressive skills including acting, script writing, movement, music, design and production skills. You will develop skills in acting and stage craft and study the development of theatre in Australia and throughout the world. This is an exciting course which is based in practical and experiential learning. There will also be excursions to Sydney to see live theatre and the opportunity to participate in workshops with professional theatre practitioners. You will find Drama challenging, rewarding and lots of fun.	ATAR
How am I assessed?	Students will be assessed through a series of tasks which include active performance [both solo and group], research and design projects, logbooks, written exams and workshop activities.	CAPA
Where can it take me?	The skills and acquired knowledge may be further developed and employed in a variety of professions, including theatre, media, community arts, teaching, law, journalism, welfare and consultancy.	
Who should do it?	Students who have an interest in performance and working collaborating with others. Students who can communicate creatively through performance, design (technical skills), writing and film making. Students who wish to improve self-confidence.	
What will I need?	An A4 logbook. Enthusiasm and just be willing to have a go and try something new. There is a fee of \$25.00 p.a. to cover material costs, and a theatre excursion.	
HSC notes	The HSC consists of a one and one half hour theory paper, which involves writing two essays, a mandatory Group Devised Performance of an original piece of theatre, and an Individual Project in Performance, Design, Critical Analysis, Video or Script Writing.	NESA Developed Course –

MUSIC 1 2 UNIT

What will I do?	<p>Select your own topics/styles of music to study from a list of 22 which range from Music of the 20th and 21st Centuries, Popular Music, Rock Music, Theatre to Music of the Media.</p> <p>Some of these topics will be class or individual studies. This will be done through the various facets of Music – Performance aural (listening), musicology (research/listening) and composition.</p>	ATAR
How am I assessed?	Assessment will be done through a variety of tasks based on the four areas of study - aural, composition, musicology and performance.	
Where can it take me?	Music is an ATAR subject that enables students to enter University. It can lead to TAFE, numerous music industry positions such as teaching (pre-school to tertiary level), musician, sound engineer etc or simply for the enjoyment.	CAPA
Who should do it?	<p>Students who enjoy performing and/or listening to music and either have a basic knowledge of the fundamentals of music or who are willing to apply themselves to acquire these skills or students who have been learning from a private music teacher.</p> <p>This course is designed for most HSC Music students who wish to continue to study Music, or related subjects, at Tertiary level or for personal endeavours.</p>	
What will I need?	<ul style="list-style-type: none"> · An instrument to regularly practice on · a manuscript book and folder · Determination to succeed and regularly rehearse. · An outside instrumental tutor would be of great benefit (but not mandatory). <p>There is a course fee of \$35.00 p.a. to cover the cost of materials.</p>	NESA Developed Course –
HSC notes	Performance, Aural (listening) Examination and Electives (you select). These three Electives are selected from Performance and/or Musicology/Viva Voce (Topic discussion) and/or Composition.	

VISUAL ARTS 2 UNIT

What will I do?	Visual Arts is about the practice of Art making (Practical - 50%) and the study of Art Criticism and Art History (Theory - 50%). Students develop their own artworks culminating in a 'Body of Work' for the HSC. We also investigate other Artists and Artworks in written tasks, to develop our understanding of the world of Art.	<div>ATAR</div> <div>CAPA</div> <div>NESA Developed Course –</div>
How am I assessed?	Practical art making and the writing component of Art History and Art Criticism are treated as two equal strands. Preliminary focuses on investigating and making a variety of works in different media and developing an understanding of art history and art criticism.	
Where can it take me?	Visual Arts is a full matriculation course for all universities. You will develop a portfolio of works which can be used as a resume when interviewing for further study in the areas of Art or Graphics. Fields such as Web Design, Visual Artists, Architects, Film Directors can all flow from this course. The creative and critical thinking skills you will develop in Visual Arts are beneficial for any career path in the 21st Century.	
Who should do it?	The course builds on the skills and knowledge from Visual Arts elective but is also to students with a desire to advance their skills in artmaking and art analysis.	
What will I need?	Subject fee of \$30.00 p.a. in Preliminary Year and \$20.00 p.a. for HSC Year. Students are responsible for the material cost for their Body of Work materials. Students require a A4 theory book and a Visual Arts Sketchbook.	
HSC notes	50% is based on the development and submission of a 'Body of Practical Work' during the HSC year. The other 50% is assessed through case studies during the HSC year. An external exam relating to your Art History and Criticism will occur at the end of the course.	

VISUAL DESIGN 2 UNIT

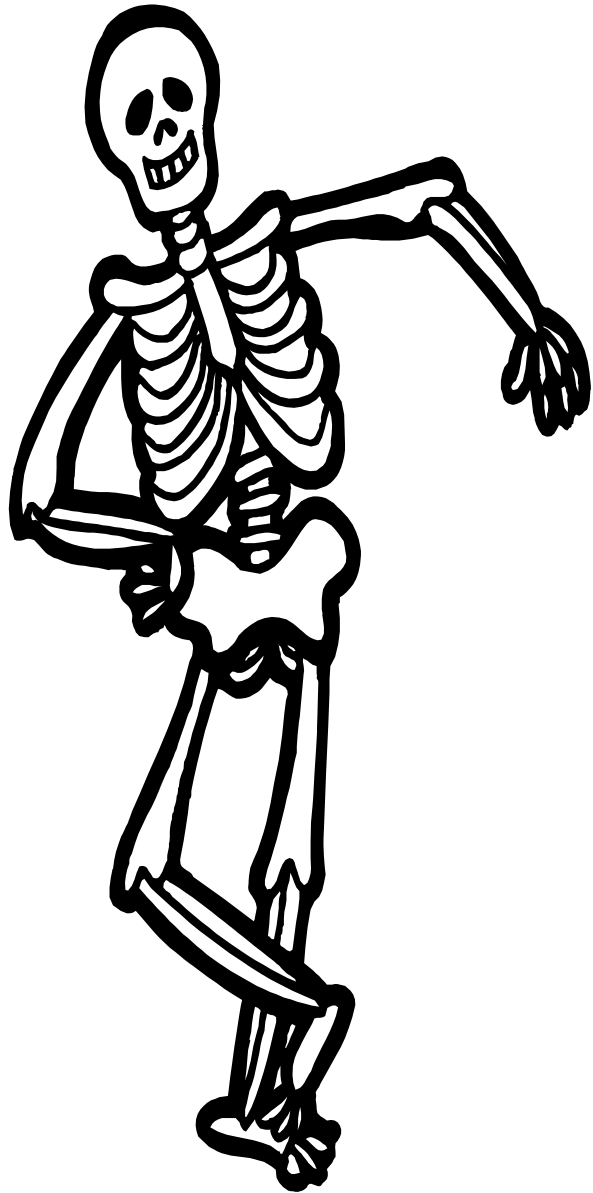
What will I do?	In this course you will be able to make art with an emphasis on design for a functional purpose. Two, three and four dimensional projects and techniques painted and digital posters, CD covers, cartooning, airbrushing, T-shirt printing, clothing decoration and accessories, skateboard promotional material, jewellery, furniture, videos, animation and models are some of the works you can make.	NON ATAR
How am I assessed?	70% of this course is based on designing and making functional art objects. 30% is based on your study and research into product design and designers.	
Where can it take me?	This is a basic introduction to Visual Design and can be studied with Visual Arts or alone to develop skills that can apply to many life situations. It can lead to a wide range of art and design courses at TAFE or private design colleges. Creative and critical thinking skills developed in Visual Design can assist your career prospects in many fields such as makeup designers, web designers, animators, illustrators, graphic designers.	CAPA
Who should do it?	Anyone with an interest in using different art skills and techniques to design and make practical objects.	
What will I need?	Course fee of \$40.00 p.a. for art materials for each year studied. You will also need a sketchbook.	NESA Endorsed Course –
HSC notes	There is no external HSC examination at the end of course. You will get to specialize in one field in an individual project in Term 3. You will begin in the Preliminary Year and move onto the HSC Course.	

WET (DARKROOM) PHOTOGRAPHY, VIDEO AND DIGITAL IMAGING 2 UNIT

What will I do?	This course is aimed at developing your practical expertise in using a 35mm SLR film camera, working in the darkroom and exploring different ways of making photographs with visual interest and meaning. Digital photography and manipulation of still and video images will also be part of the course.	NON ATAR
How am I assessed?	70% of the assessment in this course is based on “hands on” experience and 30% is based on technical research and the study of other photographers and their work.	
Where can it take me?	Using studio and location shots you will have the opportunity to use film and digital cameras and associated equipment to make, develop and print your own photographs. It often becomes a lifelong interest that you will continue to pursue long after your HSC studies. Further study into photography can also lead to work in this field, along with film, animation and graphic design.	CAPA
Who should do it?	All students are eligible to take this course.	NESA Endorsed Course –
What will I need?	There is a Preliminary Year course fee of \$60.00 for the 2 Unit Course and \$70.00 for the 2 Unit HSC Year which provides you with photographic paper, film, use of digital videos and cameras, darkroom equipment, and chemicals. You will need a lined A4 workbook.	
HSC notes	There is no external examination of students in HSC Board Endorsed Courses. This is a 2 Unit Board Endorsed Course that is offered for the Preliminary and HSC years.	

P_{ERSONAL} D_{EVELOPMENT} / H_{EALTH} / P_{HYSICAL} E_{DUPLICATION}

PDHPE



PERSONAL DEVELOPMENT / HEALTH / PHYSICAL EDUCATION (PD/H/PE) 2 UNIT

What will I do?	<p>The Preliminary Course examines health and physical activity, the management of personal health and the basic anatomy and physiology.</p> <p>Students have the opportunity to do practical 'options' in First Aid and Outdoor Recreation.</p> <p>In the HSC Course students focus on major issues related to Australia's health status. They also look at factors that affect physical performance.</p> <p>Options: students focus on improved performance and safe participation by learning about advanced approaches to training or sports medicine concepts. There is also an opportunity to think critically about the factors that impact on sport and physical activity in Australian Society. Students will also undertake First Aid training (if appropriate).</p>	<p style="writing-mode: vertical-rl; transform: rotate(180deg);"> NESA Developed Course - PD/H/PE </p> <p style="text-align: center;"> ATAR </p>
How am I assessed?	<p>There are four assessment tasks in each year.</p> <p>Three assignments and one exam in each year.</p>	
Where can it take me?	<p>This course benefits anyone thinking of going into the following areas: Nursing, PE/Health teaching, Physiotherapy, Sport Journalism, Sport & Recreation, Park Ranger, Fitness Management, Sports Trainer and Sports First Aid.</p>	
Who should do it?	<p>Students who have an interest in health and fitness as a way of life. Students who are concerned about their own lifestyle and are also concerned with the health of the general community.</p>	
What will I need?	<p>A notebook, a willingness to learn and an ability to be involved in discussions. This course incurs a fee of \$12.00 p.a.</p>	
HSC notes	<p>The HSC examination consists of a three hour paper.</p> <p>The course attracts marks to count towards a ATAR.</p>	

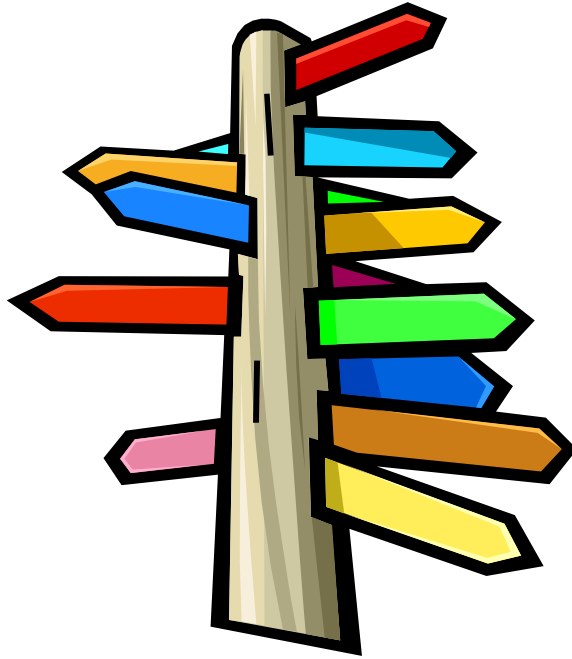
SPORT, LIFESTYLE & RECREATION (SLR)

2 UNIT

What will I do?	<p>This course focuses on those aspects of learning that relate most closely to participation in sport and physical activity. Students will develop knowledge and understanding of the value of activity, increased levels of Sport and Recreation contexts and skills in planning to be active. Students also develop a preparedness to contribute to the establishment of a health promoting community that is supportive of its members adopting a healthy lifestyle. Students must be prepared to do aquatics. Students will be given the opportunity to experience different physical activity opportunities and earn qualifications in swimming, coaching and fitness.</p> <p>Attain APOLA and Bronze Star Awards.</p>	<p style="writing-mode: vertical-rl; transform: rotate(180deg);"> NESA Developed Course - PD/H/PE NON ATAR </p>
How am I assessed?	<p>There are four assessment tasks:</p> <ul style="list-style-type: none"> • two assignments and two examinations • practical assessments/performances etc 	
Where can it take me?	<p>This course benefits anyone thinking of entering the following areas: fitness leaders, recreation officers, sports coaching, personal training.</p>	
Who should do it?	<p>Students who have an interest in health and fitness as a way of life.</p>	
What will I need?	<p>The course incurs a cost of \$100 per year (Can be paid in instalments throughout the year). This pays for bus and venue hire for the year.</p> <p>A notebook, willingness to learn.</p> <p>Enthusiasm for physical activity and fitness.</p>	
HSC notes	<p>This course is a 2 unit course covering Years 11 and 12.</p> <p>It attracts no marks towards a ATAR.</p>	

VET

(Vocational Education & Training)



Industry Curriculum Framework (ICF) VET Courses delivered at Shoalhaven High School

- **Construction**
- **Hospitality**
- **Primary Industries**
- **Skills for Work and Vocational Pathways**

Externally Delivered VET (EVET)

Externally Delivered Vocational Education and Training (EVET) courses are delivered by TAFE or other VET Providers. EVET allow school students to gain workplace skills and experience to get a head-start on their career.

EVET allows you to:

- Gain practical, work-related skills to enhance your future employment opportunities.
- Complete units that count towards your Higher School Certificate (HSC).
- Start or complete a nationally-recognised VET qualification while still at school.
- When you finish your EVET course you'll receive a nationally-accredited Certificate qualification or a Statement of Attainment. Most EVET courses articulate into further TAFE, or Private College courses.

EVET courses are offered across a variety of job areas, such as children's services, automotive mechanics, animal studies, human services (nursing), and many more.

Contribution towards Higher School Certificate (HSC) and ATAR.

All EVET courses count towards a student's HSC. EVET Industry Curriculum Framework (ICF) courses may contribute to the Australian Tertiary Admissions Rank (ATAR) with students having ability to sit for an optional Higher School Certificate exam. All ICF courses include mandatory work placement of 70 hours over 2 years.

Work Placement

Many EVET courses include some time working in the industry area of your course. This is called 'work placement' and it gives students the chance to learn new skills and apply the skills they have already learnt as part of their course.

Work placement helps students to:

- Gain insights into the kind of career they would like to have
- Make informed decisions about further training and study
- Become more employable
- Be better equipped for business and employment opportunities

When applying for an EVET course, students and their parents will need to show that:

- Career pathway planning is integral to the student's course selection
- The student understands the commitment required, including:
- The completion of all course requirements, including mandatory work placement
- Regular attendance. Students are responsible for arranging their own travel and meeting the travel costs
- Time-tabling issues which may require students to catch up on class work missed at school.

Applications to undertake an EVET courses occur during Term 3.

Contact the school's VET Coordinator or Careers Adviser for details on what VET courses are available and how to apply.



Education

Wagga Wagga RTO 90333

CPC20211 Certificate II in Construction Pathways

Entry Requirements:

Students must complete a VET Enrolment Form and supply their USI before the commencement of any training and assessment.

Foundation skills may be accessed using the LLN Robot to determine the language, literacy and numeracy suitability of a student for this course.

Course: Construction (240 indicative hours) 4 Preliminary and/or HSC units in total

Board Developed Course Category B status for Australian Tertiary Admission Rank (ATAR)

Students must complete a minimum of 70 hours of work placement to meet the requirements of the HSC.

Course Description This curriculum framework course is accredited for the HSC and provides students with the opportunity to obtain nationally recognised vocational qualifications. This is known as dual accreditation. Students will be able to gain skills in planning and organising work, measuring and calculating, reading and interpreting plans, safe and environmentally sustainable work practices and the use of construction tools and equipment. Skills gained in this industry transfer to other industries. Occupations in the construction industry include: construction or trades assistant, builder's labourer, bricklayer, carpenter, plasterer, roof tiler, concreter, painter and decorator and wall or floor tiler.

Core Units of Competency

- CPCCCM1012A Work effectively & sustainably in the construction industry
- CPCCCM1013A Plan and organise work
- CPCCCM1014A Conduct workplace communication
- CPCCCM1015A Carry out measurements and calculations
- CPCCCM2001A Read and interpret plans and specifications
- CPCCOHS2001A Apply OHS requirements, policies & procedures in the construction industry

Elective Units of Competency

- CPCCCA2002B Use carpentry tools and equipment
- CPCCCA2011A Handle carpentry materials
- CPCCCM2004A Handle construction materials
- CPCCCM2006B Apply basic levelling procedures
- CPCCCA2003A Erect and dismantle formwork for footings and slabs on ground
- CPCCWHS1001 Prepare to work safely in the construction industry. (White Card)

Options: To gain the qualification and be eligible for the HSC, **Option1 must be completed.**

- CPCCJN2001A Assemble components
- CPCCJN2002B Prepare for off-site manufacturing process

This course contains two additional units above the qualification to meet NESA HSC requirements.

Students may apply for recognition of prior learning or be granted credit transfer provided suitable evidence is submitted.

Support services may be available to meet needs of individual students.

Qualifications Students who are assessed as competent in the above units of competency will be eligible for a CPC20211 Certificate II in Construction Pathways. Students who do not achieve competency in all the above units and achieve at least one unit of competency will be eligible for a Statement of Attainment towards CPC20211 Certificate II in Construction Pathways.

<p>Competency-based Assessment: Students in this course work to develop the competencies, skills and knowledge described by each unit of competency above. To be assessed as competent a student must demonstrate to a qualified assessor that they can effectively carry out tasks to industry standards. Students will be progressively assessed as 'competent' or 'not competent' in individual units of competency.</p> <p>N Determinations: Where a student has not met NSW Education Standards Authority (NESA) course completion criteria, including meeting the mandatory work placement requirement, they will receive an "N" determination (course not satisfactorily completed). The course will not count towards the HSC although units of competency achieved will count towards an Australian Qualifications Framework (AQF) qualification.</p> <p>External Assessment (optional HSC examination): Students completing this course are eligible to sit a written HSC examination which may be used in the calculation of an ATAR. The examination is independent of the competency-based assessment undertaken during the course and has no impact on the eligibility of a student to receive an AQF VET qualification.</p> <p>Complaint or Appeals: Students may lodge a complaint or appeal regarding assessment decisions through their VET trainer.</p>
<p>Resources costs: Discuss payment options with your trainer</p> <p>Refund Arrangements: on a pro-rata basis</p>
<p>Delivery Arrangements: As per timetable</p>
<p>Exclusions: Refer to NESA Stage 6 VET Board Endorsed course description. Where recognition of prior learning (RPL)/credit transfer (CT) is applied to a unit of competency based on achievement of another unit of competency within this same course, the indicative hours for the unit achieved through RPL/CT would not contribute to HSC credit.</p>
<p>A school-based traineeship is available in this course, for more information: http://www.sbatinnsw.info/</p>



Education

Wagga Wagga RTO 90333

SIT20416 Certificate II in Kitchen Operations

Entry Requirements:

Students must complete a VET Enrolment Form and supply their USI before the commencement of any training and assessment.

Foundation skills may be accessed using the LLN Robot to determine the language, literacy and numeracy suitability of a student for this course.

Course: Hospitality (240 indicative hours)

4 Preliminary and/or HSC units in total

Board Developed Course

Category B status for Australian Tertiary Admission Rank (ATAR)

Students must complete a minimum of 70 hours of work placement to meet the requirements of the HSC.

Course Description

This curriculum framework course is accredited for the HSC and provides students with the opportunity to obtain nationally recognised vocational qualifications. This is known as dual accreditation. This qualification reflects the role of individuals working in kitchens who use a defined and limited range of food preparation and cookery skills. They work under direct supervision and involved in mainly routine and repetitive tasks.

This qualification provides a pathway for commercial cooks into commercial cookery including work in kitchen operations in restaurants, hotels, catering operations, clubs, pubs, cafes, coffee shops and institutions such as aged care, hospitals, prisons, schools.

Possible job titles: breakfast cook, catering assistant, fast food cook, sandwich hand, take-away cook.

Core Units of Competency

- BSBWOR203 Work effectively with others
- SITHCCC001 Use food preparation equipment
- SITHCCC005 Prepare dishes using basic methods of cookery
- SITHCCC011 Use cookery skills effectively
- SITHKOP001 Clean kitchen premises and equipment
- SITXFSA001 Use hygienic practices for food safety
- SITXINV002 Maintain the quality of perishable items
- SITXWHS001 Participate in safe work practices

Elective Units of Competency

- SITHIND002 Source & use information on the hospitality industry
 - SITXFSA002 Participate in safe food handling practices
 - SITHCCC002 Prepare and present simple dishes
 - SITHCCC006 Prepare appetisers and salads
 - SITCCC003 Prepare and present sandwiches
 - BSBSUS201 Participate in environmentally sustainable work practices
- This course contains two (2) additional units above the qualification to meet the requirements of the NSW Education Standards Authority (NESA).

Students may apply for recognition of prior learning or be granted credit transfer provided suitable evidence is submitted.

Support services may be available to meet needs of individual students.

Qualifications

Students who are assessed as competent in the above units of competency will be eligible for a SIT20416 Certificate II in Kitchen Operations. Students who do not achieve competency in all the above units and achieve at least one unit of competency will be eligible for a Statement of Attainment towards SIT20416 Certificate II in Kitchen Operations. Portfolios of evidence are required for some units of competency in this course.

Competency-based Assessment: Students in this course work to develop the competencies, skills and knowledge described by each unit of competency. To be assessed as competent a student must demonstrate to a qualified assessor that they can effectively carry out tasks to industry standards. Students will be progressively assessed as 'competent' or 'not yet competent' in individual units of competency.

N Determinations: Where a student has not met the NSW Education Standards Authority (NESA) course completion criteria, including meeting the mandatory work placement requirement, they will receive an "N" determination (course not satisfactorily completed). The course will not count towards the HSC although units of competency achieved will count towards an Australian Qualifications Framework (AQF) qualification.

External Assessment (optional HSC examination): Students completing this course are eligible to sit a written HSC examination which may be used in the calculation of an ATAR. The examination is independent of the competency-based assessment undertaken during the course and has no impact on the eligibility of a student to receive an AQF VET qualification.

Complaint or Appeals: Students may lodge a complaint or appeal regarding assessment decisions through their VET trainer.

Resources costs: \$33 per term or \$130 per year Discuss payment options with your trainer

Refund Arrangements: on a pro-rata basis

Delivery Arrangements: As per timetable

Exclusions: Refer to NESA Stage 6 VET Board Endorsed course description. Where recognition of prior learning (RPL)/credit transfer (CT) is applied to a unit of competency based on achievement of another unit of competency within this same course, the indicative hours for the unit achieved through RPL/CT would not contribute to HSC credit.

A school-based traineeship is available in this course, for more information: <http://www.sbatinnsw.info/>

For more information on possible outcomes please visit the NESA website:

<http://educationstandards.nsw.edu.au/wps/portal/nesa/11-12/stage-6-learning-areas/vet>



AHC20116 Certificate II in Agriculture

Entry Requirements:

Students must complete a VET Enrolment Form and supply their USI before the commencement of any training and assessment.

Course: Primary Industries (240 indicative hours)

4 Preliminary and/or HSC units in total

Board Developed Course Category B status for Australian Tertiary Admission Rank (ATAR)

Students must complete a minimum of 70 hours of work placement to meet the requirements of the HSC.

Course Description

This curriculum framework course is accredited for the HSC and provides students with the opportunity to obtain nationally recognised vocational qualifications. This is known as dual accreditation. This qualification provides an entry level occupational outcome in agriculture. Students will be able to gain skills and knowledge in a range of activities and functions in the production and care of livestock and/or plants, safety, maintaining and using equipment such as tractors, chemical use, interpreting weather and sustainability. Skills gained in this industry transfer to other industries. Job roles and titles vary across different industry sectors. Possible occupations in this industry include farm or station hand/labourer, shearer, livestock breeder/attendant/ stockperson, horticultural assistant and farmer/farm manager.

Core Units of Competency

- AHCWHS201 Participate in WHS processes
- AHCWRK209 Participate in environmentally sustainable work practices
- AHCWRK204 Work effectively in the industry

Elective Units of Competency

- AHCWRK201 Observe and report on weather
- AHCCHM201 Apply chemicals under supervision
- AHCPMG201 Treat weeds
- ACHWRK205 Participate in workplace communications

Healthy Plants

- AHCPMG202 Treat plant pests, diseases and disorders
- AHCNSY202 Care for nursery plants
- AHCPCM201 Recognise plants
- AHCLSK211 Provide feed for livestock
- AHCLSK209 Monitor water supplies
- AHCINF202 Install, maintain and repair farm fencing

Students may apply for recognition of prior learning or be granted credit transfer provided suitable evidence is submitted. Support services may be available to meet needs of individual students.

Qualifications

Students who are assessed as competent in the above units of competency will be eligible for AHC20116 Certificate II in Agriculture. Students who do not achieve competency in all the above units and achieve at least one unit of competency will be eligible for a Statement of Attainment towards AHC20116 Certificate II in Agriculture.

Competency-based Assessment: Students in this course work to develop the competencies, skills and knowledge described by each unit of competency above. To be assessed as competent a student must demonstrate to a qualified assessor that they can effectively carry out tasks to industry standards. Students will be progressively assessed as 'competent' or 'not competent' in individual units of competency.

N Determinations: Where a student has not met NSW Education Standards Authority (NESA) course completion criteria, including meeting the mandatory work placement requirement, they will receive an "N" determination (course not satisfactorily completed). The course will not count towards the HSC although units of competency achieved will count towards an Australian Qualifications Framework (AQF) qualification.

External Assessment (optional HSC examination): Students completing this course are eligible to sit a written HSC examination which may be used in the calculation of an ATAR. The examination is independent of the competency-based

assessment undertaken during the course and has no impact on the eligibility of a student to receive an AQF VET qualification.

Complaint or Appeals: Students may lodge a complaint or appeal regarding assessment decisions through their VET trainer.

Resources costs: Discuss payment options with your trainer

Refund Arrangements: on a pro-rata basis

Delivery Arrangements: as per timetable

Exclusions: Refer to NESA Stage 6 VET Board Endorsed course description. Where recognition of prior learning (RPL)/credit transfer (CT) is applied to a unit of competency based on achievement of another unit of competency within this same course, the indicative hours for the unit achieved through RPL/CT would not contribute to HSC credit.

A school-based traineeship is available in this course, for more information: <http://www.sbatinnsw.info/>

For more information on possible outcomes please visit the NESA website:

<http://educationstandards.nsw.edu.au/wps/portal/nesa/11-12/stage-6-learning-areas/vet>



Education

Wagga Wagga RTO 90333

FSK20113 Certificate II in Skills for Work and Vocational Pathways

Entry Requirements:

Students must complete a VET Enrolment Form and supply their USI before the commencement of any training and assessment.

Foundation skills may be accessed using the LLN Robot to determine the language, literacy and numeracy suitability of a student for this course.

Course: Skills for Work and Vocational Pathways Board Endorsed Course

There is not an Australian Tertiary Admission Rank (ATAR) option for this course.

Mandatory work placement is not a requirement for the HSC course.

Qualification: FSK20113 Certificate II in Skills for Work and Vocational Pathways (3 units x 1 year, 180 hours)

Course Description This board endorsed course is accredited for the HSC and provides students with the opportunity to obtain nationally recognised vocational qualifications. This is known as dual accreditation. This course is designed for individuals who require further foundation skills development to prepare for workforce entry or vocational training pathways.

Course Units of Competency

The following content is delivered in the 180 hour course and a modified pattern of delivery is available in the 120 hour course.

- FSKDIG03 Use digital technology for routine workplace tasks
- FSKLRG09 Use strategies to respond to routine workplace problems
- FSKLRG11 Use routine strategies for work-related learning
- FSKNUM14 Calculate with whole numbers and familiar fractions, decimals and percentages for work
- FSKNUM15 Estimate, measure and calculate with routine metric measurements for work
- FSKOCM07 Interact effectively with others at work
- FSKRDG10 Read and respond to routine workplace information
- FSKWTG09 Write routine workplace texts
- FSKLRG10 Use routine strategies for career planning
- FSKOCM04 Use oral communication skills to participate in workplace meetings
- FSKRDG09 Read and respond to routine standard operating procedures
- FSKWTG07 Write routine formal workplace texts
- BSBITU211 Produce digital text documents
- BSBWOR204 Use business technology
- BSBITU212 Create and use spreadsheets
- FNSFLT202 Develop and use a savings plan

FSK20113 Certificate II in Skills for Work and Vocational Pathways represents an option for students to demonstrate key employability skills and a range of foundation skills to employers. This course is project based and projects will be determined by the school. The course provides an opportunity for students to demonstrate skills in literacy and numeracy along with communication and problem solving skills that relate directly to the workplace.

Students may apply for recognition of prior learning or be granted credit transfer provided suitable evidence is submitted.

Support services may be available to meet needs of individual students.

Qualifications Students who are assessed as competent in sufficient units of competency will be eligible for a FSK20113 Certificate II Skills for Work and Vocational Pathways. Students who do not achieve competency in all the units in the 180 hour course or complete the 120 hour course and achieve one unit of competency will be eligible for a Statement of Attainment towards FSK20113 Certificate II in Skills for Work and Vocational Pathways.

Competency-based Assessment: Students in this course work to develop the competencies, skills and knowledge described by each unit of competency. To be assessed as competent a student must demonstrate to a qualified assessor that they can effectively carry out tasks to industry standards. Students will be progressively assessed as 'competent' or 'not competent' in individual units of competency.

N Determinations: Where a student has not met the New South Wales Education Standards Authority (NESA) course completion criteria they will receive an "N" determination (course not satisfactorily completed). The course will not count towards the HSC although units of competency achieved will count towards an Australian Qualifications Framework (AQF) qualification.

External Assessment (optional HSC examination): No. There is **not** an external assessment (optional HSC examination) for this course and this course **does not** contribute towards an ATAR.

Complaint or Appeals: Students may lodge a complaint or appeal regarding assessment decisions through their VET trainer.

Resources costs: Discuss payment options with your trainer

Refund Arrangements: on a pro-rata basis

Delivery Arrangements: as per timetable

Exclusions: Community Services – Introduction. refer to NESA Stage 6 VET Board Endorsed course description. Where recognition of prior learning (RPL)/credit transfer (CT) is applied to a unit of competency based on achievement of another unit of competency within this same course, the indicative hours for the unit achieved through RPL/CT would not contribute to HSC credit.

There is no school based traineeship or apprenticeship pathway associated with this course.

For more information on possible outcomes please visit the NESA website:

<http://educationstandards.nsw.edu.au/wps/portal/nesa/11-12/stage-6-learning-areas/vet>



Education

Public Schools NSW, Wagga Wagga. RTO 90333

VET ENROLMENT FORM

The Registered Training Authority (RTO) is responsible for the quality of the training and assessment in compliance with The Standards for RTOs 2015 and for the issuance of the Australian Qualifications Framework (AQF) certification documentation, <https://www.asqa.gov.au/about/australias-vet-sector/standards-registered-training-organisations-rtos-2015>.

Prior to enrolment the RTO provides accurate information that enables the learner to make informed decisions about undertaking training with the RTO. Every student is provided with a specific site VET Course Information sheet that provides qualification information.

Privacy Notice

Under the *Data Provision Requirements 2012*, Public Schools NSW Wagga Wagga, RTO 90333, is required to collect personal information about you and to disclose that personal information to the National Centre for Vocational Education Research Ltd (NCVER).

Your personal information (including the personal information contained on this enrolment form), may be used or disclosed by Public Schools NSW Wagga Wagga, RTO 90333, for statistical, administrative, regulatory and research purposes. Public Schools NSW Wagga Wagga, RTO 90333, may disclose your personal information for these purposes to:

- Commonwealth and State or Territory government departments and authorised agencies; and NCVER
- Personal information that has been disclosed to NCVER may be used or disclosed by NCVER for the following purposes
 - populating authenticated VET transcripts
 - facilitating statistics and research relating to education, including surveys and data linkage
 - understanding how the VET market operates, for policy, workforce planning and consumer information and
 - administering VET, including program administration, regulation, monitoring and evaluation.

NCVER will collect, hold, use and disclose your personal information in accordance with the *Privacy Act 1988* (Cth), the National VET Data Policy and all NCVER policies and protocols (including those published on NCVER's website at www.ncver.edu.au).

Study reason

Select the main reason you are undertaking this course (Tick ONE box only)

- | | |
|---|--------------------------|
| To gain extra skills to apply for a job | <input type="checkbox"/> |
| For personal interest or self-development | <input type="checkbox"/> |
| To gain skills for community/voluntary work | <input type="checkbox"/> |
| To learn about the requirements for work | <input type="checkbox"/> |
| Other reason | <input type="checkbox"/> |

Personal details

Full Name _____

Date of Birth ____ / ____ / ____

If you have a disability, impairment or long-term condition ensure your school is informed.

Delivery details

This qualification will be delivered at school over one or two years.

Unique Student Identifier (USI)

Detailed course information is provided on each Course Information Sheet.

From 1 January 2015, we Wagga Wagga RTO can be prevented from issuing you with a nationally recognised VET qualification or statement of attainment when you complete your course if you do not have a Unique Student Identifier (USI). In addition, we are required to include your USI in the data we submit to NCVER. If you have not yet obtained a USI you can apply for it directly at <https://www.usi.gov.au/students/create-your-usi/> on computer or mobile device.

Each student must provide the school with their USI number before enrolment in a VET course.

<input type="text"/>	<input type="text"/>	<input type="text"/>	<input type="text"/>	<input type="text"/>	<input type="text"/>	<input type="text"/>	<input type="text"/>	<input type="text"/>	<input type="text"/>
----------------------	----------------------	----------------------	----------------------	----------------------	----------------------	----------------------	----------------------	----------------------	----------------------

Training Product (Qualification) Details

Your school has the Authority to Deliver (ATD) the following courses.

Select the course(s) below in which you are requesting to enrol.

AHC20116 Certificate II in Agriculture

☐

CPC20211 Certificate II in Construction Pathways

☐

FSK20113 Certificate II in Skills for Work and Vocational Pathways

☐

SIT20416 Certificate II in Kitchen Operations

☐

Fees and refunds

The school site will advise on fee collection from students. Details are available on each VET Course Information sheet

Parent / Carer declaration:

I declare that the personal information provided to the school about my son/daughter, named below, is true and correct to the best of my knowledge.

STUDENT NAME

PARENT NAME PARENT SIGNATURE DATE

.....

Complaints and appeals statement

<https://education.nsw.gov.au/policy-library/policies/complaints-handling-policy>

[For specific RTO procedures please contact your VET coordinator.](#)

PLEASE RETURN TO Ms Lloyd, Ms Rosskelly, Ms O'Neil

Original copy to be filed in the school student folder.

Digital copies for the VET cohort to be filed in the Enrolment Folder within the School folder on QMS.

Frequently Asked Questions **about VET Industry Curriculum Framework (ICF) Courses and the HSC**

What does VET mean?

VET means Vocational Education and Training. Here it also means HSC courses for senior students that deliver training outcomes.

School, TAFE or other providers deliver VET for the HSC.

What is the difference between VET Courses and other HSC Courses?

- In some VET Courses work placement is compulsory (VET ICF and CEC Courses only)
- VET Courses can deliver dual accreditation—meaning a VET Course can give an AQF, or a TAFE qualification in addition to units of study counting towards the HSC.
- Learning and assessment focuses on skills and is competency based.

What is reported on the HSC?

All VET Courses are recorded on the HSC. Units of competencies are reported in a student logbook. There are no marks, grades or ranking of students for the HSC.

What are competencies?

A student is assessed for competency against standards set by industry for skill performance. Being assessed as competent means a student has reached a pre-defined minimum level of work performance in an industry skill area.

Do VET Courses count towards an ATAR (Australian Tertiary Admission Rank)?

The five Industry Curriculum Framework Courses and Accounting (BCD) may be used for 2 units towards the ATAR. To qualify for an ATAR a student must complete 240 hour course (ie 2 units over 2 years) and the written exam. Many VET Courses do not count for the ATAR.

What is the Australian Recognition Framework (ARF)?

The ARF broadly refers to national principles, standards for deliver and qualifications in VET. VET is delivered by registered training organizations (RTO). These can be government schools, TAFEs and other training providers eg Aerospace Training Centre, 313 Training.

What are Australian Qualification Framework (AQF) qualifications?

VET qualifications are expressed as AQF levels. They are recognised Australia wide. HSC students may gain AQF I, II and sometime part of AQF III qualifications.

Why is work placement compulsory in ICF Courses?

Industry says workplace learning greatly enhances classroom training. Work placement is additional to course time eg in a 240 hour course, 70 hours is work placement - a total of 310 hours maximum (usually done as one day per week or in a one-week block). Part-time work may be used to claim credit.

Who delivers VET to students?

RTOs have VET accredited teachers delivering and assessing VET. Each year about 1,000 local students study VET at school for the HSC.

What is RPL?

Recognition of Prior Learning applies to competencies in a course and mandatory work placement. RPL means a student can seek for their VET Course recognition of skills and knowledge held as a result of formal training, work experience and/or life experience.

The relevant VET teacher holds application forms.

**Studying a VET ICF course qualifies a student for
a HSC, AQF qualifications and an ATAR**

EXTERNALLY DELIVERED VOCATIONAL EDUCATION COURSES - EVET

TAFE delivered courses

Board Developed Courses

- Automotive Vocational Preparation (Mechanical)
- Business Services (blended)
- Electrotechnology
- Human Services – Nursing
- Tourism, Travel and Events

Board Endorsed Courses

- Animal Studies
- Beauty Services - Make Up
- Beauty Services - Salon Assistant
- Early Childhood and Care
- Maritime Operations

KIAMA/SOALHAVEN COMMUNITY COLLEGE delivered courses

- Outdoor Recreation
- Fitness

AEROTS TRAINING SERVICES delivered courses

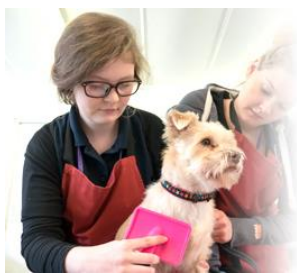
- Aeroskills
- Aviation Cabin Crew – Flight Attendant

How do I get into a EVET class for 2021?

Expression of Interest form is to be completed and returned to a Careers Adviser
before 4th September

EVET classes follow the same guidelines as school

**Attendance, punctuality, effort and completion of all Assessment Tasks
are required by students.**



ANIMAL STUDIES

2 Units x 1 Year or

2 Units x 2 Years

Course description: This course enables you to develop the skills and knowledge required for the care and maintenance of animals including handling, feeding, grooming, health and hygiene practices.

Career opportunities: Animal care attendant, animal shelter attendant, kennel hand, cattery attendant, pet shop attendant, assistant dog groomer, zookeeper, veterinary nurse.

Delivery pattern: 2u x 2yrs (240hrs) No ATAR

Potential Qualification Outcome: Certificate II in Animal Studies (ACM20117)

Mandatory work placement hours: 35

Delivery pattern: 2u x 1yrs (120hrs) No ATAR

Potential Qualification Outcome: Statement of Attainment Certificate II in Animal Studies

Mandatory work placement hours: 0

TAFE NOWRA



AUTOMOTIVE VOCATIONAL PREPARATION (Mechanical)

2 Units x 2 Years

Course description: You will gain a range of skills suitable for employment in the automotive industry. This stream of study focuses on providing you with the knowledge and skills in performing minor service and preparatory work in the light or heavy vehicle mechanical area of the automotive industry.

Career opportunities: Trades assistant, vehicle service assistant, automotive service assistant, trainee service person, automotive trainee and/or automotive apprentice.

Delivery pattern: 2 u x 2yrs (240hrs) ATAR eligible

Potential Qualification Outcome: Certificate II in Automotive Voc Preparation (AUR20716)

Mandatory work placement hours: 70

TAFE NOWRA



Beauty Services - MAKE-UP

2 Units x 2 Years or

2 Units x 1 year

Course description: Acquire skills in designing and applying make-up, cleansing skin, demonstrating the use of skin care products and applying nail technology. Learn to use your product knowledge to consult with clients and make recommendations on products.

Career opportunities: Make-up artist, beauty assistant working in the film/television industry or beautician.

Delivery pattern: 2u x 2yrs (240hrs) NO ATAR

Potential Qualification Outcome: Statement of Attainment
Certificate III in Make-Up (SHB30215)

Mandatory work placement hours: 35

Delivery pattern: 2u x 1yr (120hrs) NO ATAR

Potential Qualification Outcome: Statement of Attainment
Certificate III in Make-Up (SHB30215)

Mandatory work placement hours: 0

TAFE NOWRA



Beauty Services - SALON ASSISTANT

3 Units x 1 Year

Course description: You will develop practical skills including how to braid, apply colour and blow-wave, as well as learn head, neck and shoulder massage skills.

Career opportunities: This course is for people who want to gain employment as a hairdressing salon assistant or hairdressing receptionist.

Delivery pattern: 3u x 1yrs (180hrs) NO ATAR

Potential Qualification Outcome: Certificate II in Salon Assistant (SHB20216)

Mandatory work placement hours: 35

TAFE NOWRA



EARLY CHILDHOOD EDUCATION and CARE

2 Units X 2 Years

Course description: This course will give you the skills to begin a career in children's services and work with young children and assist in their educational development. The course will develop skills in planning, implementing and managing programs in early childhood education and care settings, in accordance with licensing, accreditation and duty of care requirements. This course will give you the opportunity to complete the full Certificate III in Early Childhood Education and Care as part of your HSC.

Career opportunities: Early childhood educator in a regulated early childhood service e.g. preschool, long day care and family day care.

Delivery pattern: 2u x 2yrs (240hrs) **NO ATAR**

Potential Qualification Outcome: Statement of Attainment
Certificate III in Early Childhood Education and Care (CHC30113)

Mandatory work placement hours: 35

TAFE NOWRA



ELECTROTECHNOLOGY (Electrical trade skills)

2 Units x 2 Years

Course description: These courses will provide you with entry level training for employment in the electrotechnology industry. You will cover skills in safe work practices, problem solving and routine work activities. Learn how to design, install, service, repair and maintain electrical and electronic equipment.

Career opportunities: Apprenticeships in the areas of air conditioning, refrigeration and electrical fitting.

Delivery pattern: 2u x 2yrs (240hrs) **ATAR eligible**

Potential Qualification Outcome: Certificate II in Electrotechnology (Career Start) (UEE22011)

Mandatory work placement hours: 70

TAFE NOWRA



HUMAN SERVICES - NURSING

2 Units x 2 Years (240 hours)

Plus 1 unit X 1 Year (60 hours) for full qualification

Course description: This course will equip you with knowledge about allied health administration, medical terminology and basic business skills. You will learn how to work with, and facilitate the empowerment of, people with acute conditions, people with disabilities, people with mental health issues, people from diverse backgrounds and people experiencing, or at risk of, homelessness. You will also learn how to respond effectively to behaviours of concern, and how provide first aid and basic emergency life support.

Career opportunities: Nursing Assistant, Nursing Support Worker, Wardperson or a Patient Care Attendant. You'll be able to work in Aged Care Facilities, Hospitals, Clinics, Private Medical Practices, and Home and Community Care Services.

Delivery pattern: 2u x 2yrs (240hrs) **ATAR eligible**

Potential Qualification Outcome: Statement of Attainment

Certificate III in Health Services Assistance (Assisting in nursing work in acute care) (HLT33115)

Mandatory work placement hours: 80

Delivery pattern: 1 1u x 1 yr (60hrs)

Potential Qualification Outcome: Full certificate with the 2u x 2yr course

Certificate III in Health Services Assistance (Assisting in nursing work in acute care) (HLT33115)

Mandatory work placement hours: 0

TAFE NOWRA



MARITIME OPERATIONS

2 Unit x 1 Year

Course description: If you are passionate about boating and fishing and love the ocean, a career in maritime operations could be for you. This course will help you develop the practical skills and knowledge required to work as a coxswain. You will gain skills and knowledge to perform basic service checks on small vessel marine propulsion and auxiliary systems, carry out routine servicing of marine extra low and low voltage electrical systems, undertake refuelling and fuel transfer operations, monitor the conditions and seaworthiness of a small vessel and plan and navigate a short voyage within inshore limits.

Delivery pattern: 2u x 1yrs (120hrs) **NO ATAR**

Potential Qualification Outcome: Statement of Attainment

Certificate II in Maritime Operations (Coxswain Grade 1 Near Coastal) (MAR20318)

Mandatory work placement hours: 0

TAFE NOWRA



TOURISM, TRAVEL & EVENTS

2 Unit x 2 Years

Course description: Gain skills for employment in a range of sectors in the tourism and events industries, focussing on providing customer service, tourism advice and communicating with customers from diverse backgrounds.

Career opportunities: Events coordinator, conference assistant, tourism consultant, reservations clerk, group tour coordinator,

Delivery pattern:	2u x 2yrs (240hrs)	ATAR eligible
Potential Qualification Outcome:	Certificate III in Events (SIT30516)	
Mandatory work placement hours:	70	

TAFE NOWRA



OUTDOOR RECREATION

3 Units x 1 Year

Course description: This course is for people interested in entering the Outdoor Recreation industry. You will develop the skills and knowledge to be competent in performing core skills in outdoor recreation environments and assisting with the conduct of a range of outdoor activities.

Career opportunities: Outdoor Recreation Assistant/Participant (Bushwalking), Outdoor Recreation Assistant/Participant (Canoeing)

Delivery pattern:	3u x 1yrs (180hrs)	NO ATAR
Potential Qualification Outcome:	Certificate II in Outdoor Recreation (SIS20213)	
Mandatory work placement hours:	35	

SHOALHAVEN / KIAMA COMMUNITY COLLEGE



FITNESS

2 units x 2 years

Course description: You will learn about anatomy and physiology principles, how to plan, deliver and monitor exercise programs and make healthy eating recommendations.

Career opportunities: personal trainer, fitness facility manager and special needs trainer in a wide range of fitness settings, gymnasiums and sports centres

Delivery pattern: **2u x 2yrs (240hrs)** **NO ATAR**

Potential Qualification Outcome: Statement of Attainment

Certificate III in Fitness SIS30315

Mandatory work placement hours: 35

SHOALHAVEN / KIAMA COMMUNITY COLLEGE



AVIATION -

Cabin Crew (Flight Attendant)

2 Unit x 2 Years

2 units x 1 Year

Course description: Course is composed of academic and practical skills associated with cabin crew or flight attendant duties.

Career opportunities: Entry level work in the aviation industry such as cargo services operator, cabin crew, check in and customer service assistant or baggage handler.

Delivery pattern: 2u x 2yrs (240hrs) NO ATAR

Potential Qualification Outcome: Statement of Attainment
Certificate III in Aviation (Cabin Crew) (AVI30116)

Mandatory work placement hours: 35

Delivery pattern: 2u x 1yr (120hrs) NO ATAR

Potential Qualification Outcome: Statement of Attainment
Certificate III in Aviation (Cabin Crew) (AVI30116)

Mandatory work placement hours: 0

AEROTS TRAINING SERVICES – WEST NOWRA



AEROSKILLS

2 Units x 2 Years

Course description: This course will prepare you for employment within the sought after aviation industry – opening up a wide range of career opportunities in Australia and around the world.

Career opportunities: This course would be a valuable inclusion in the curriculum of a student who was aiming to enter the Aeronautics Industry on completion of the HSC through a traineeship, an apprenticeship, engineering degree or those considering joining the services.

Delivery pattern: 2u x 2yrs (240hrs) No ATAR

Potential Qualification Outcome: Statement of Attainment
Certificate II in Aeroskills (MEA20415)

Mandatory work placement hours: 70

AEROTS TRAINING SERVICES – WEST NOWRA

LIFE SKILLS COURSES

Students with additional learning needs and/or diagnosed disabilities returning to Year 11 will be eligible to access a program of study with Life Skills courses for Stage 6 (Year 11 and 12).

The following syllabuses are available at Shoalhaven High School for eligible students:

- English Life Skills
- Mathematics Life Skills
- Personal Development, Health and Physical Education (PD/H/PE) Life Skills
- Human Society and Its Environment (HSIE) Life Skills
- Science Life Skills
- Creative Arts Life Skills
- Technology Life Skills
- Work and the Community Life Skills
- Community and Family Studies Life Skills

There are no Stage 6 Life Skills VET courses.

Each Life Skills course is comprised of a 2 unit Preliminary course and a 2 unit HSC course. To be eligible for consideration for Life Skills courses, students will generally be those with a diagnosed disability and most likely have completed Life Skills courses throughout Stage 5 (Year 9 and 10).

While there are no external examinations for Life Skills courses, it should not be seen as an “easy option” for students, but rather an alternative for those students with additional learning needs. The school Learning and Support Team and relevant personnel will determine eligibility on case by case basis, together with parental input.

Students who successfully complete Life Skills courses will receive a Higher School Certificate testamur, a Life Skills Profile of Student Achievement and a Record of Achievement.

For more information contact either: Mr G. Patricks - Rel HT Support
Mrs T. Jennings - HT Learning Support

NOTES: