

# Shoalhaven High School - Newsletter

Respect, Responsibility, Safety and Participation



Park Road Nowra East NSW 2541 T 4421 8022 F 4423 0272 E [shoalhaven-h.school@det.nsw.edu.au](mailto:shoalhaven-h.school@det.nsw.edu.au)  
[www.shoalhaven-h.schools.nsw.gov.au](http://www.shoalhaven-h.schools.nsw.gov.au) [www.facebook.com/shoalhavenhigh](https://www.facebook.com/shoalhavenhigh)

2019 Term 2 Week 4

Friday 23 May 2019

## PRINCIPAL'S MESSAGE

Welcome back to Term 2 and we are ready for the most hectic term in the school year. Term 2 is when things get really underway with numerous sporting events and academic requirements that need to be met.

During Week 2 we sent our Zone Cross Country Team to Willandra to compete and came away with some excellent results. Numerous athletes qualified for the regional carnival later in the term, but a special congratulations goes to Lexi Charalambous who came first in her age group and was named age champion for the zone. Lexi has qualified for a cross country team that will travel to Canada to compete later in the year. What an amazing effort and achievement for Lexi. Still on the sporting front, Sam Wright Smith also went away to compete in the CHS Hockey carnival with the south coast team coming 5<sup>th</sup>, but Sam was selected in the Opens NSW CHS team. Another amazing effort for a talented athlete and a big achievement for a Year 10 student.

The sporting news continues with our own Jasmine Greenwood who went away to compete at the Australian National Titles. Not only did Jasmine compete, but she is now the 200 Individual Medley Australian title holder. Well done and congratulations Jasmine. Isabelle Harris in Year 7 also needs to be congratulated as she has been selected in the NSW country junior football team. She will attend a training camp later this term and championships after that. Well done Isabelle. Another student who has excelled at their chosen sport is Blake Gurney, Blake represented the South Coast at the CHS Championships for open Rugby Union. Another wonderful effort from our students.

Term 2 also brings about a change to our mobile phone policy. The school has a new slogan- "Phones off and away". This slogan indicates that we want our students focused on the learning, not their technology. Students have had the first 5 weeks to get use to the new policy so  
[Respect, Responsibility, Safety & Participation](#)

here is a rundown. Students will be asked to put "phones off and away", if the students choose not to follow this then the teacher will ask for the phone. If the student hands the phone over, without argument, the student can retrieve the phone at the end of the lesson. This is stage 1. Stage 2 occurs when the student refuses to hand the phone over after using when it is supposed to be away. The Head Teacher will be called to get the phone. If the phone is handed over without argument they can retrieve the phone at the end of the day. Stage 3 is when they refuse to hand over the phone to a head teacher. The Deputy Principal is called and the student is taken to the office where parents/carers are contacted. The phone is collected or students are asked to be picked up for persistent defiance. We are hoping to have all parents/carers support in this matter as our focus is removing the distractions in class so our students' can reach their potential.



As the weather gets a little cooler I would like to take this opportunity to remind parents and carers that we are a uniform school and the wearing of non-uniform jumpers is not acceptable. Wearing the correct uniform makes our students take ownership and pride in their education and it is a safety issue.

Last but not least, the construction of the new office administration building is under way. It is due to be completed late August and into early September. I will provide copies of the plans and artists impression when I receive the final copies.

Thanks and I look forward to a great term.

**Damian Rees, Relieving Principal**

## **TALENTED ATHLETES**

Congratulations to these extraordinary students!  
Follow the links to news articles to read more.

### **Jasmine Greenwood**



Photo: SWIMMING AUSTRALIA

<https://www.southcoastregister.com.au/story/6126110/greenwood-set-to-make-a-splash-at-world-championships/?cs=204&fbclid=IwAR1PhHSsDhyW6pNXgsaE7QK-5bDn3IV-dJqsKU-CRyceo5HRY9brNjInDo>

### **Wade Phillips/Hands**



(image from South Coast Register site)

<https://www.southcoastregister.com.au/story/6084689/school-hoalhaven-quartet-help-ias-shine-at-academy-games/?cs=204&fbclid=IwAR1vv2ciOuS7ha1ebSzR9yGy2VaYzHrvqgi37-iADqIBqepBikpo8xTpw0g>

### **Sam Wright-Smith**



Sam Wright-Smith (front row, fourth from left) and his NSW under 18s team.

Photo: CLICK INFOCU

[https://www.southcoastregister.com.au/story/6084609/wright-smiths-nsw-side-claim-aussie-bronze-medal/?cs=204&fbclid=IwAR1IRY3Yj6ZAo7KRnqi32zRft\\_nKLpxIfVEoF1XGKQN2r\\_SkpF2Uqdul02M](https://www.southcoastregister.com.au/story/6084609/wright-smiths-nsw-side-claim-aussie-bronze-medal/?cs=204&fbclid=IwAR1IRY3Yj6ZAo7KRnqi32zRft_nKLpxIfVEoF1XGKQN2r_SkpF2Uqdul02M)

### **Alexis Charalambous**



(image from South Coast Register site)

<https://www.southcoastregister.com.au/story/6012259/shoalhaven-sextet-shine-at-aussie-athletics-titles/?cs=204&fbclid=IwAR1VXEtZHBgdHf4FhtW10lcMS7ApW5t3BrsLHOgCD3u3tVyKa5eLW2OG8o>

### **Grace Hughes**



[https://www.illawarramercury.com.au/story/6109889/junior-afl-girls-chasing-dreams-after-representative-selections/?cs=302&fbclid=IwAR0p\\_B96-vKI9zEiCgvwdXdTLvR0a9xuS9PAhJFRWXpBZR\\_YFp-d9JAVoMc](https://www.illawarramercury.com.au/story/6109889/junior-afl-girls-chasing-dreams-after-representative-selections/?cs=302&fbclid=IwAR0p_B96-vKI9zEiCgvwdXdTLvR0a9xuS9PAhJFRWXpBZR_YFp-d9JAVoMc)

## **NATIONALL CONSISTENT COLLECTION OF DATA**

NCCD is an annual collection (since 2015) that counts the number of school students with disability and the level of reasonable educational adjustment they are provided. All schools must now collect and submit information annually. Personal details such as student names or other identifying information will not be provided to local or federal education authorities.

Contact your child's school if you have further questions about Nationally Consistent Collection of Data on School students with Disability.

You can view the Fact Sheet PDF at

[https://docs.education.gov.au/system/files/doc/other/2018\\_-\\_nccd\\_-\\_fact\\_sheet\\_for\\_parents\\_and\\_carers\\_english.pdf](https://docs.education.gov.au/system/files/doc/other/2018_-_nccd_-_fact_sheet_for_parents_and_carers_english.pdf)



## YEAR 12 EARTH AND ENVIRONMENTAL SCIENCE EXCURISON

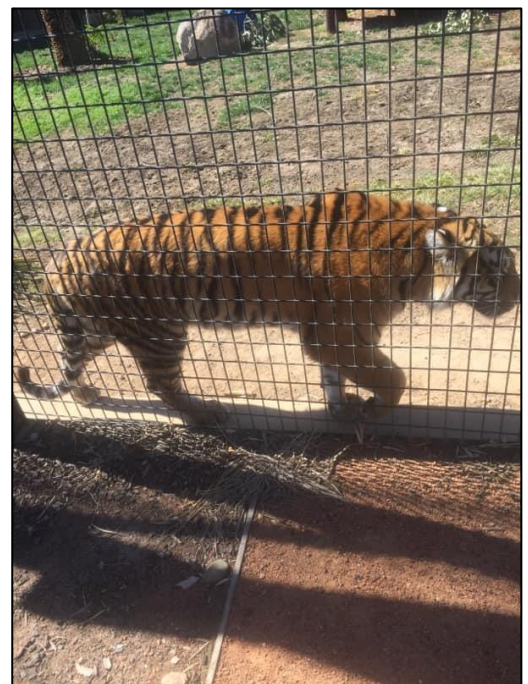
Year 12 Earth and Environmental Science students travelled to the Geoscience Australia facility in Canberra today. They saw Australia's Earthquake and Tsunami monitoring and warning centre, the SHRIMP which can date the oldest 4.4 billion year old rocks on our planet. They saw phosphorescent minerals, amazing fossils and microfossils and created their own earthquake which was recorded on a seismograph to name a few things.





## ABORIGINAL STUDIES

On Monday 8 April and Tuesday 9 April, our Aboriginal Studies class headed on an overnight excursion to Canberra. Students were lucky enough to have been welcomed at the tent embassy with a traditional smoking ceremony, followed by the lovely Aboriginal art museum where one of our students found 2 photos of her brother. Students enjoyed a trip to the zoo and a delicious Chinese meal too! A big thanks to Aunty Pat, Aunty Kerrie and Mr Buchan (the amazing bus driver) for their support on the trip. A special mention to Mrs Martin for organising the trip!





## NATIONAL DAY OF ACTION AGAINST BULLYING

Recently Headspace visited Shoalhaven High School to celebrate our National Day of Action against bullying.





## HOT HOUSE

Putting up the hot house



Respect, Responsibility, Safety & Participation



## MUSIC AND DRAMA EXCURSION

Some of our music and drama enthusiasts experienced a moving performance at the Belvoir Theatre in Sydney today. 'Barbara and the Camp Dogs' is a powerful Australian production packed full of rock music, talented leading ladies and laughter. Mrs Snape and Auntie Nicole enjoyed this day out with such a great group of young people!



## YOUTH WEEK COUCH CART

Junior SRC students working on the mascot for our entry in the Youth Week Couch Cart time trials to promote support for Youth Homelessness in the Shoalhaven.





## YEAR 8 ASPIRE BALLOON EXPERIMENT



## YEAR 11 EARTH AND ENVIRONMENT SCIENCE EXPERIMENT

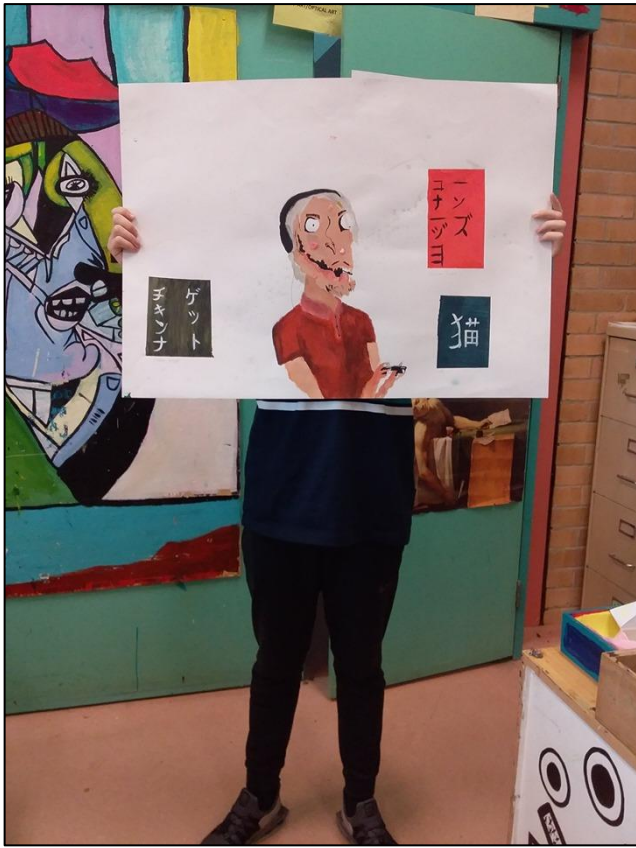
Students from the Year 11 Earth and Environmental Science class created edible soil profiles to promote their understanding of the different soil horizons.



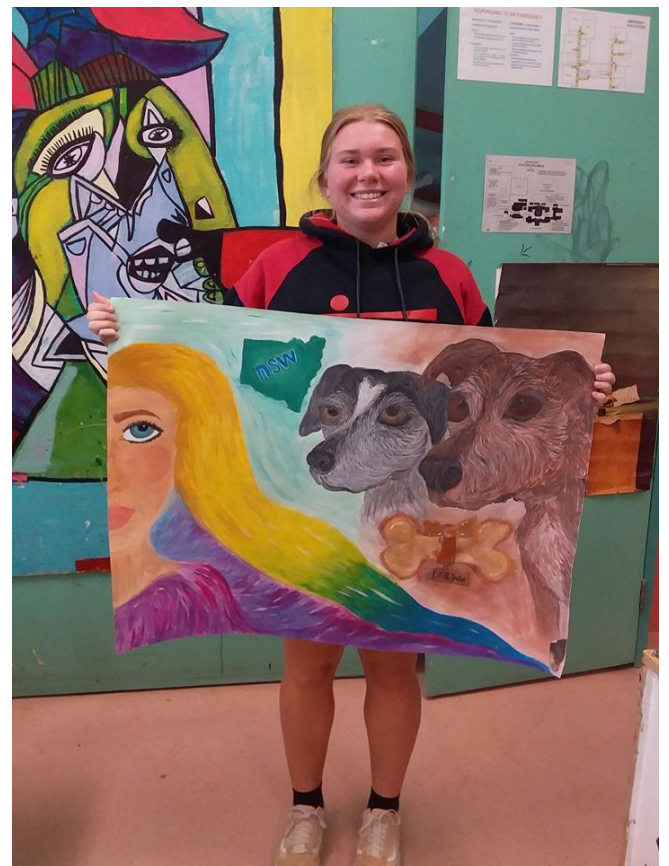
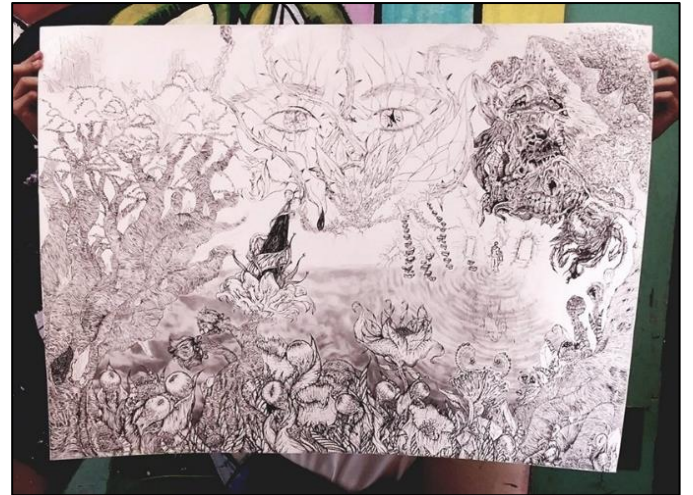


## YEAR 11 VISUAL ART 'PERSONAL IDENTITY'

Some wonderful art work from Year 11 students on 'Personal Identity'.











## SCHOOL BUS TRAVEL

As of the 29 April 2019, students travelling on a school bus to and from school are required to have a valid school bus pass for the school bus service they are catching. If a valid school pass cannot be shown, a fare will be charged. In the event the school bus pass is lost, some form of student ID is to be shown whilst obtaining a replacement pass (fees apply). You can help make your child's school bus journey more pleasant by ensuring your child has a valid school bus pass and presents it to the driver on boarding the bus morning AND afternoon. Parents are reminded that the School Free Travel is only valid from home to school as per the conditions on the back of the pass. Fares will be charged for all other journeys.

If you are yet to apply for a bus pass or your details have changed eg: address, please go to [www.transportnsw.info/school-students](http://www.transportnsw.info/school-students) alternatively you can call the transport info line on 131 500.

If you have any questions in regards to the correct school bus for your child to catch, please contact the appropriate company:

Kennedy's Bus Service:	Ph: 4421 7596
Nowra Coaches:	Ph: 4423 5244
Shoal Bus:	Ph: 4423 2122
Stuart's Coaches:	Ph: 4421 0332

### SHS UNIFORM SHOP



**OPEN DURING TERM TIME:**

**MONDAY AND THURSDAY**

**9AM - 1PM**

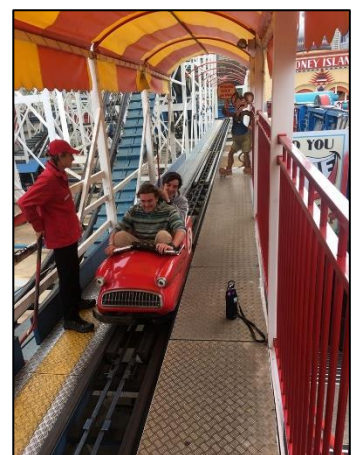
**EFTPOS OR CASH ONLY!**

**STUDENT ASSISTANCE IS AVAILABLE FOR ELIGIBLE PARENTS**



## YEAAR 12 LUNA PARK EXCURSION

Year 12 went to Luna Park for an excursion. All the students had a great time.





## YEAR 8 ASPIRE

Year 8 Aspire students had a creative and informative excursion to the Royal Botanic Gardens. The theme of the day was based around trees. In the morning we used line and tone to create works based on the magnificent Moreton Bay figs. This was followed by a collaborative composition that included made and natural elements. We then learnt about adaptations and Aboriginal uses of a number of different Australian native plants. We have 2 female stick insects from the gardens in Lab 5 who we hope will breed so we can release them in the school environment.





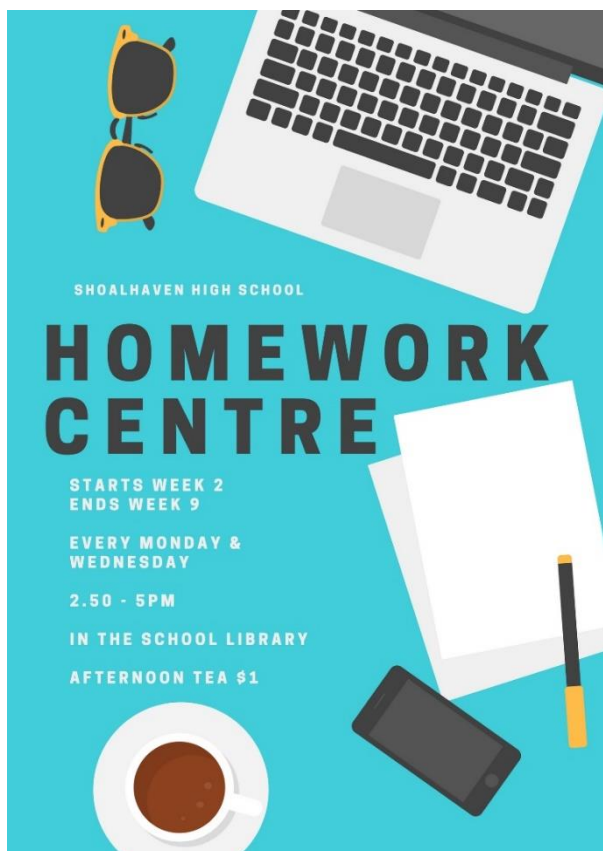
## JUMP FIRST ASK LATER

Students from all cohorts had a fun experience at the Jump First Ask Later workshop today. Many thanks to the team and the Shoalhaven Entertainment Centre for offering the experience to our students.





## HOMWORK CENTRE



## BREAKFAST CLUB

Breakfast Club is on before school each Thursday and Friday at the uniform shop. Anybody can come and it is run by staff volunteers.

Fruit is also available from Lisa in the Admin/Welfare Office at the bottom of A block.



## 2019 HSC TIMETABLE



### [2019 HSC Timetable](#)

## FEES AND EASTER RAFFLE WINNER

Thank you to all those parents/carers who have paid for school fees already this year. Your payments are assisting to offset many materials and resources used across the school by all students.



Congratulations to Gloria Williams, who has won the Easter Basket Draw.

Please continue to pay for your school fees, and all full payments of fees will go into the next draw for our Term 2 prize.

All current entries will remain in the draw for the next one....Good Luck!



## HARRY SCOLLER FUN RUN





## PUMA CUP REPORT

Monday 13 May saw Shoalhaven High School take on Karabar High School (Queanbeyan) in Round Three of the South Coast NSW CHS Girls Football Knockout. Karabar High nominated to travel over the mountain and face us at Isons Park, South Nowra. They were appreciative of having no fog to contend with whilst playing. It had been smooth sailing for the Shoalhaven High girls in the opening rounds and they were looking forward to facing some tougher competition.

It was a game of possession at the beginning with most of the ball held by our girls. There were a few early chances by both teams and some excellent defending from Andrea C and Hayley W in the middle at the back of our defensive line. Isabelle H, Shoalhaven High's up and coming gun forward, was able to slot one past the keeper to make it 1-0 before half time.



At half time we spoke about our ability to keep control of the ball and ensure the long ball from Karabar High was anticipated. It was a tough opening few minutes of the second half, with Karabar High scoring from some scrambling Shoalhaven defense to make it 1-1. Our young Shoalhaven High girls were determined to win and dug deep to try and get the lead again. With plenty of possession and a few missed chances Shoalhaven looked certain to score; however, off a strong counter attack, Karabar High were able to make the score 2-1.

It was a tense final few minutes of the game and we were lucky enough to get a shot off which hit the crossbar and the ball looked like it went over the goal line. Unfortunately, the goal was disallowed, and the

final whistle went - Karabar High defeated our girls 2-1 in a very tough match.

Credit to all of our players on the day for an excellent performance and great sportsmanship. Well done.

## ATHLETICS CARNIVAL

A collection of photos from the Athletics Carnival.











## BRING YOUR OWN TECHNOLOGY (BYOT)


Please have a read of the BYOT Policy/Guidelines on our website (Under Our school then BYOT) or click on the link below, for the expectations on how technology and mobile phones are used at our school, and the consequences for misuse of the technology.

[BYOT Policy](#)



### Bring Your Own Technology






#### Positive Choices

- Students putting phones on silent and putting them away in bags or in the facility provided by teachers, if they are not required for the lesson. Other devices are also put away, if this is requested.
- Students following teacher instructions, so that they are using devices appropriately during the lesson.
- Students showing staff their work if they are using devices, whenever they are asked to do so during the course of the lesson.

The following are examples of positive uses for devices in lessons that your teachers may access in classes:

- research activities which involve the use of internet access.
- note taking, video making for projects and assessments.
- photographing notifications of tasks and work not completed on boards.
- recording the progress of work in practical classes.
- using the calendar to create homework / due date entries/ excursion/ test notifications – student diary/ organiser.
- timekeeping/ stop watch for speeches/calculator.
- using SRN, One Note, Kahoot or other appropriate software to allow student responses/ organise tasks.
- teacher directed quizzes.
- dictionary/ thesaurus work.
- recording and storage for multimedia tasks.
- submission of tasks via email.
- accessing ABC iView, educational apps.
- recording information whilst on excursions.



#### Negative Choices

- Students not putting phones in bags, the facility which may be provided by staff in classes or in a place acceptable to staff, and not turning them off, if they are not being used for the lesson.
- Students not having 'lids ajar' on laptops, or not removing earphones when requested to do so by staff.
- Students refusing to use technology in accordance with teacher instructions.

This includes:

- Students texting or calling others on mobiles during class time.
- Students refusing to show staff their work on the technology.
- Students failing to make a reasonable effort with the technology to complete work.
- Students passing mobiles to others for inappropriate use or not handing phones to staff before going to the toilet.
- Students playing games on their device during lessons.
- Students using technology to bully, harass, offend or threaten others – includes illegal filming/ photography = serious offence!

**Being able to use technology in class is the teacher's choice, not the student's choice! There are consequences for any student who breaks the rules.**

## UNIFORM POLICY

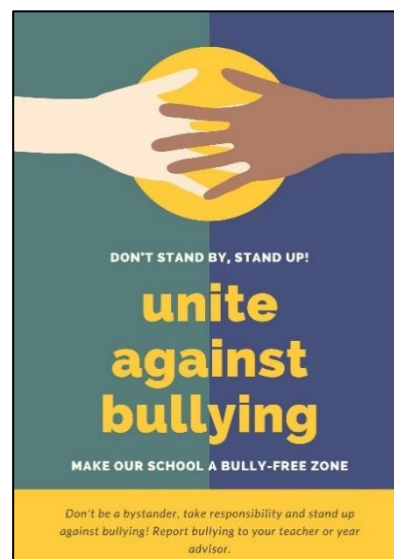
The Shoalhaven High School Uniform Policy is found on our School website under 'Our School' or click on the link

[2018 Uniform Policy](#)

## ANTI-BULLYING PLAN

The Shoalhaven High School Anti-bullying Plan is found on our School website under 'Our School' or click on the link


[Anti-bullying Plan](#)



## STUDENT TIMETABLES

Students now have access to view their timetable for 2018 online via the Student/Parent Sentral Portal.

To access, please visit <https://web2.shoalhaven-h.schools.nsw.edu.au/portal/login> then log in with your DoE username and password.



### Shoalhaven High School

#### Student and Parent Portal

Please enter your username and password below

[Forgot Password?](#)





Education &  
Communities

Public Schools NSW

## Compulsory School Attendance

Information for parents

Education for your child is important and regular attendance at school is essential for your child to achieve their educational best and increase their career and life options. NSW public schools work in partnership with parents to encourage and support regular attendance of children and young people. When your child attends school every day, learning becomes easier and your child will build and maintain friendships with other children.

### What are my legal responsibilities?

Education in New South Wales is compulsory for all children between the ages of six years and below the minimum school leaving age. The *Education Act 1990* requires that parents ensure their children of compulsory school age are enrolled at, and regularly attend school, or, are registered with the Board of Studies, Teaching and Educational Standards for homeschooling.

Once enrolled, children are required to attend school each day it is open for students.

### The importance of arriving on time

Arriving at school and class on time

- ensures that students do not miss out on important learning activities scheduled early in the day
- helps students learn the importance of punctuality and routine
- gives students time to greet their friends before class
- reduces classroom disruption.

Lateness is recorded as a partial absence and must be explained by parents.

### What if my child has to be away from school?

On occasion, your child may need to be absent from school. Justified reasons for student absences may include

- being sick, or having an infectious disease
- having an unavoidable medical appointment
- being required to attend a recognised religious holiday
- exceptional or urgent family circumstance e.g. attending a funeral.

Following an absence from school you must ensure that within **7** days you provide your child's school with a verbal or written explanation for the absence. However, if the school has not received an explanation from you within **2** days, the school may contact you to discuss the absence.

Principals may decline to accept an explanation that you have provided if they do not believe the absence is in the best interest of your child. In these circumstances your child's absence would be recorded as unjustified. When this happens the principal will discuss their decision with you and the reasons why.

Principals may request medical certificates or other documentation when frequent or long term absences are explained as being due to illness. Principals may also seek parental permission to speak with medical specialists to obtain information to collaboratively develop a health care plan to support your child. If the request is denied, the principal can record the absences as unjustified.

### Travel

Families are encouraged to travel during school holidays. If travel during school term is necessary, discuss this with your child's school principal. An *Application for Extended Leave* may need to be completed. Absences relating to travel will be marked as leave on the roll and therefore contribute to your child's total absences for the year.

In some circumstances students may be eligible to enrol in distance education for travel periods over 50 school days. This should be discussed with your child's school principal.







**If a student misses as little as 8 days in a school term, by the end of primary school they'll have missed over a year of school.**

### **My child won't go to school. What should I do?**

You should contact the principal as soon as possible to discuss the issue and ask for help. Strategies to help improve attendance may include a referral to the school's learning and support team or linking your child with appropriate support networks. The principal may seek further support from the Home School Liaison Program to develop an Attendance Improvement Plan.

### **What might happen if my child continues to have unacceptable absences?**

It is important to understand that the Department of Education may be required to take further action where children of compulsory school age have recurring numbers of unexplained or unjustified absences from school.

Some of the following actions may be undertaken:

- Compulsory Schooling Conferences

You may be asked, along with your child, to attend a Compulsory Schooling Conference. The conference will help to identify the supports your child may need to have in place so they attend school regularly. The school, parents and agencies will work together to develop an agreed plan (known as Undertakings) to support your child's attendance at school.

- Application to the Children's Court  
- Compulsory Schooling Order

If your child's attendance at school remains unsatisfactory the Department may apply to the Children's Court for a *Compulsory Schooling Order*.

The Children's Court magistrate may order a Compulsory Schooling Conference to be convened.

- Prosecution in the Local Court

School and Department staff remain committed to working in partnership with you to address the issues which are preventing your child's full participation at school. In circumstances where a breach of compulsory schooling orders occurs further action may be taken against a parent in the Local Court. The result of court action can be the imposition of a community service order or a fine.

### **What age can my child leave school?**

All New South Wales students must complete Year 10 or its equivalent. After Year 10, and up until they reach 17 years of age, there are a range of flexible options for students to complete their schooling.

### **Working in Partnership**

The Department of Education recognises that working collaboratively with students and their families is the best way to support the regular attendance of students at school.

We look forward to working in partnership with you to support your child to fulfil their life opportunities.

Further information regarding school attendance can be obtained from the following websites

#### **Policy, information and brochures**

<http://www.schools.nsw.edu.au/studentsupport/programs/attendance.php>

#### **The school leaving age**

<http://www.schools.nsw.edu.au/leaving-school/index.php>

#### **For further advice contact**

Educational services

T 131 536

Learning and Engagement

Student Engagement and  
Interagency Partnerships

T 9244 5356

[www.dec.nsw.gov.au](http://www.dec.nsw.gov.au)

#### **Do you need an interpreter?**

If you need help with English and would like further information please call the Telephone Interpreter Service on **131 450** and ask for an interpreter in your language. The operator will get an interpreter on the line to assist you with your conversation. You will not be charged for this service.

©May 2015

NSW Department of Education



## COMMUNITY NEWS



Shoalhaven High School will, as a service to parents, advertise community news which may be of interest. SHS does not necessarily endorse or sponsor the events and accepts no responsibility to the management or organisation.