

Shoalhaven High School - Newsletter

Respect, Responsibility, Safety and Participation



Park Road Nowra East NSW 2541 T 4421 8022 F 4423 0272 E shoalhaven-h.school@det.nsw.edu.au
www.shoalhaven-h.schools.nsw.gov.au www.facebook.com/shoalhavenhigh

2019 Term 2 Week 8

Friday 21 June 2019

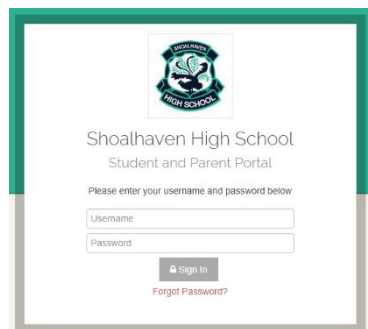
COMING EVENTS

- 24 June - Zohab Khan Poetry Workshop
- 25 June - Support Unit Nan Tien Temple Excursion
- 26 June - HSC English Student Event
- 27 June - HSC Biology Disease Workshop
 - Shoalhaven VET Awards
 - The Q Station Modern History Excursion
 - Financial Services Certificate 1
- 28 June - Marine Studies Aquarium Excursion
- 02 July - Shoalhaven Careers Expo
- 05 July - Parent/Teacher Interview Morning
 - Last day of Term 2
- 22 July - Staff return for Term 3
- 23 July - Students return for Term 3
- 26 July - NSW all Schools Cross Country Championships
- 02 August - South Coast Athletics Carnival

PRINCIPAL'S MESSAGE

As we draw nearer to the end of Term 2, and midway through the year, things just seem to speed up for our staff and students at Shoalhaven High School.

Our staff have been kept very busy on the reporting front this term. All staff have been finalising assessments and grades ready to report on the students' progress midway through the Year. All students' reports will be either printed (for those families who requested them) or published on the Sentral Parent Portal by the Monday afternoon of Week 10 - 1 July. Please have a very close read of your child's report and use the interview booking forms issued during roll call to students,



so you can attend our parent/teacher interviews on Friday 5 July. I strongly encourage all parents/carers to take time to attend these interviews so you can talk with staff about how your child is progressing and how we can work together as a partnership to ensure all students achieve their potential at school. At our last P&C meeting, it was brought to my attention about the lack of information flowing from the school to our parent body.

I have since met with staff and we are trialling placing important events and



notices on our Facebook page, the Skoolbag app, our website and also including upcoming events in the newsletter. Our school offers so many wonderful experiences to our students and we want all students to take advantage of these opportunities. We are hoping by improving this communication, all parents/carers and students will be better informed of what is happening at Shoalhaven High School.

Upcoming events
(Go to all events)

Thu 20 JUN Kiama Electorate Student Leaders Forum 20 June @ 6:15 AM-8:30 PM 9 Sydney Kiama Electorate Student Leaders Forum	Thu 20 JUN Taste of TAFE 20 June @ 9:45 AM-12:15 PM 9 TAFE Bomaderry Campus Taste of TAFE	Mon 24 JUN Zohab Khan Poetry Bootcamp 24 June @ 1:00-2:45 PM 9 Shoalhaven High School Zohab Khan Poetry Bootcamp
Tue 25 JUN Support Unit Nan Tien Temple Excursion 25 June @ 8:45 AM-2:30 PM 9 Nan Tien Temple Support Unit Nan Tien Temple Excursion	Wed 26 JUN HSC English Student Event 26 June @ 10:00 AM-2:30 PM 9 University of Sydney, Camperdown HSC English Student Event University of Sydney, Camperdown Campus	Thu 27 JUN Shoalhaven VET Awards 27 June @ 6 pm 9 Bomaderry Bowling Club Shoalhaven VET Awards

Social media

Shoalhaven High School
Year 11 Advanced Mathematics students enjoying a cross-curricular investigative task involving...
4 hrs ago
[View post on Facebook](#)

Shoalhaven High School
Parent - Carer/Teacher Day for Years 7-12 will be held in the school hall on Friday 5th July the...
2 days ago
[View post on Facebook](#)

Shoalhaven High School
Congrats to these passionate puzzle solvers from week 7, JUNIOR Giorget P - Year 7 Allie M - Year...
2 days ago
[View post on Facebook](#)

For those who have recently visited our school you would have noticed a bit of work happening at the front of the school. Work on the new administration office building has commenced and it is anticipated that this will be completed by late September, early October. The build will take place in 2 parts. The first is the construction of the new building and the second is an upgrade of the existing administration building. When the new administration building is completed, this will be the entry point for parents/carers and the general public, while the existing administration building will be the entry and exit for students only.

During this Term, we held the Zone Athletics Carnival, had students represent at Regional Cross Country, world swimming championships and the southern region final of Girls League Tag. Firstly, I would like to congratulate all our students who competed, with effort and energy, in the recent Zone Athletics Carnival. All these students were excellent ambassadors for our school and represented the school with distinction. Well done. Alexis Charalambous and Anabella Pinkard have once again qualified for the CHS Cross Country Carnival next term at Eastern Creek. This a wonderful achievement and these girls will run against the best athletes in NSW. Well done girls and good luck.

A very special mention and congratulations goes to our own super fish, Jasmine Greenwood. Jasmine has just competed in Brisbane for the Para Grand Prix (world cup trials). In this meet, Jasmine placed 4th in the 100m breaststroke, 2nd in the 50m freestyle and 2nd in the 100m freestyle. From this event, Jasmine will compete in the world championships in London in September 2019. Well done, Jasmine, and good luck in your sporting dreams.

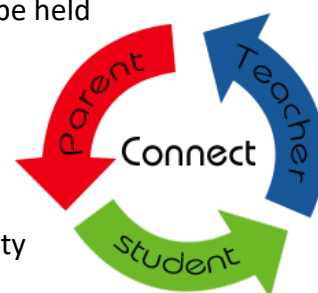
I wish all students, staff, parents and carers a safe and relaxing holiday break. All students return on Tuesday 23 July.

Damian Rees, Relieving Principal

PARENT/TEACHER DAY

Parent/Teacher Day will be held on Friday 5 July between 8.30 am and 12.30 pm in the school hall.

Students have been given an interview sheet and it is their responsibility to seek out teachers and arrange appointment times. Ten minutes have been allocated for each interview.



PHONES OFF AND AWAY

Shoalhaven High School has updated its rules for student use of mobile phones. Students have been given several weeks of advance notice by the Relieving Principal Mr Rees and staff, so compliance is expected from students.

This information ties in with the school's 'Bring Your Own Technology' policy and its focus on negative and positive choices for mobile use.

Posters have been placed around the school to remind students about 'Phones Off and Away'.



YEAR 11 EARTH AND ENVIRONMENTAL SCIENCE EXCURSION

Year 11 Earth and Environmental Science students visited the Callala Waste Water Treatment Plant and the Shoalhaven REMS scheme today. They learnt about the processes involved in the treatment of wastewater and the environmental benefits of the reuse of non-potable water in the Shoalhaven.



SHOALHAVEN ENVIRONMENT EXPO

Year 8 ASPIRE students and Miss Talbert had the opportunity to attend the Shoalhaven Environment Expo today. They were immersed into art, science and culture that inspired students to be more sustainable. They were lucky enough to be involved in a talk with Craig Reucassel from the tv series “War on Waste”. They also saw a number of stalls that provided them with knowledge and resources to create a sustainable society. Student’s take home messages include “recycle more”, “we are killing the earth and it’s time to look after it” and “we shouldn’t be throwing so much food away”.



YEAR 7 VISUAL ARTS

A Year 7 class enjoying a lesson in painting.



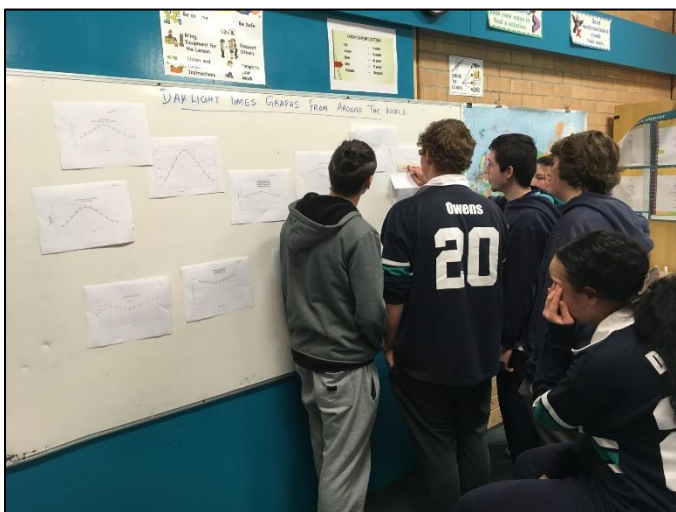
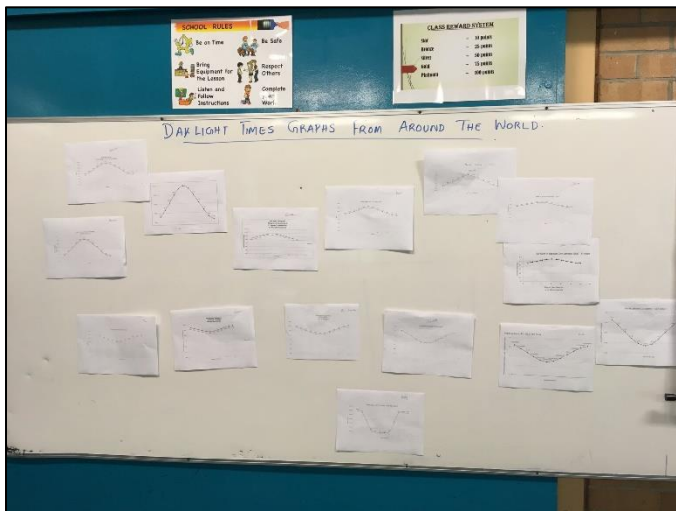
TEXTILES

The end of this term saw Year 7/3 Technology walk away from Textiles with individually designed pillows and aprons that had been tie dyed. As part of this unit the students were introduced to the sewing machine and each student developed the skills necessary to do straight stitching and zig zag. After each item was completed the students then learnt about dyeing and how elastic bands could be placed onto fabric in different ways to create unique designs. The class was excited to see the end results of the dyeing process and each student was able to take home a quality end product that they will be able to use in the future.



YEAR 11 ADVANCED MATHS

Year 11 Advanced Mathematics students enjoyed a cross-curricular investigative task involving Geography and Mathematics. Mrs Panicker, Ms Ellis and Mr Woods



NATIONALLY CONSISTENT COLLECTION OF DATA

NCCD is an annual collection (since 2015) that counts the number of school students with disability and the level of reasonable educational adjustment they are provided. All schools must now collect and submit information annually. Personal details such as student names or other identifying information will not be provided to local or federal education authorities.

Contact your child's school if you have further questions about Nationally Consistent Collection of Data on School students with Disability.

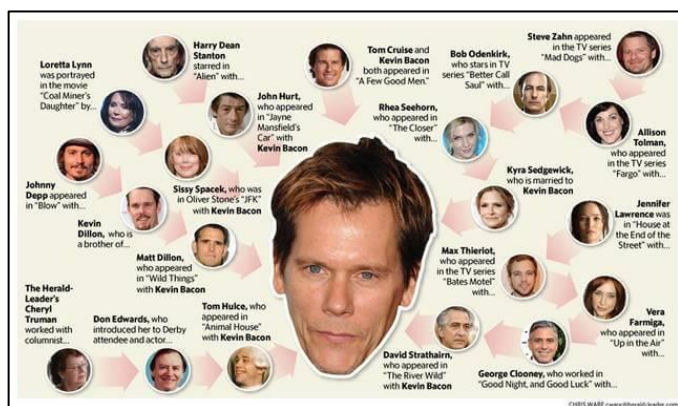
You can view the Fact Sheet PDF at

<https://docs.education.gov.au/system/files/doc/other/2018 - nccd - fact sheet for parents and carers english.pdf>

MATHS NEWS

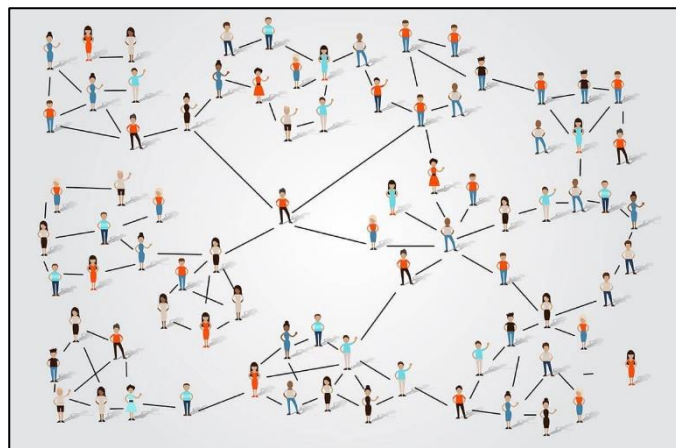
Year 12 Standard Mathematics students across New South Wales are studying a brand new topic concerning Networks. Network analysis is useful to us because it allows us to look at a network and work out the most efficient or effective way of doing something. It also exposes some interesting patterns and potentially scary outcomes.

There was a popular party game in the 90's called "6 Degrees of Kevin Bacon". Movie buffs would think of an actor and then have to link that actor to Kevin Bacon in as few a steps as possible. Kevin Bacon had worked with so many different actors that it was almost impossible NOT to be able to link him to any other actor within 6 steps. In fact the average 'Bacon' number is still only 3.1 hops. The 'Bacon number' of an actor is the number of hops needed to connect them with Kevin Bacon. While this implies that Kevin Bacon is the centre of the Acting Universe, the same system can be applied to any actor. The current centre of the universe is Christopher Lee with a score of only 2.87 (with Michael Caine in 2nd with 2.909 and Christopher Plummer 3rd with 2.912) [Source: OracleofBacon.org]



While Bacon numbers seem somewhat trivial, these connections also have importance for fields like sociology and epidemiology. In the modern global world, any living or recently deceased person on Earth can apparently be connected to any other person by an astoundingly short chain of connections. A study in the 1960's run by a Psychologist Stanley Milgram, involved asking people to deliver a letter to a friend of his in Boston. The letter had no delivery address on it and participants were simply instructed to pass the letter to someone they thought might have a chance of getting the letter one step closer to its destination. On average, the letter only needed to change hands

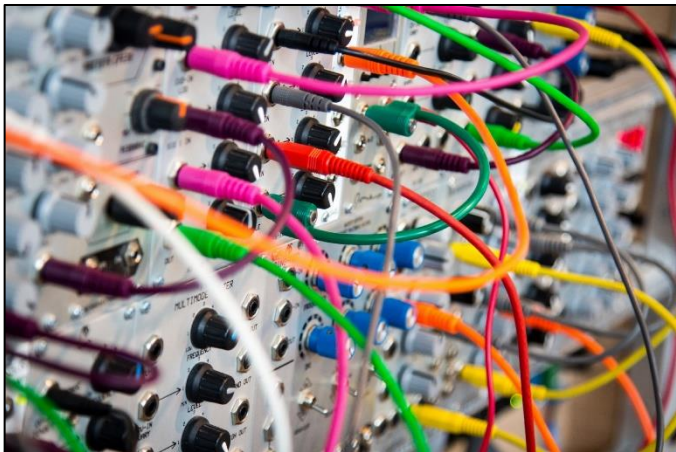
six times before reaching its destination. Milgram claimed that this demonstrated that while most people might think their social network contained relatively few people, in fact, pretty much every person in the USA was linked to everyone else by a very small number of links. The study is now known as "The Six Degrees of Separation" (from which "6 Degrees of Kevin Bacon" got its name.)



This ability to study the connections between people is extremely useful in industries such as advertising or politics. Advertising, particularly on the internet, relies heavily on understanding an individual's shopping or browsing habits. We know that 'word of mouth' is a particularly strong form of publicity. So knowing that 'Steve' likes a particular product and has a social connection with 'Olivia' means that advertising the product on 'Olivia's feed is more likely to result in a sale because she will have heard of the product from 'Steve'. When adverts pop up on your Facebook or Instagram feeds this is just as likely to be because of the shopping and browsing habits of your social group as much as it depends on your habits. Advertisers or political lobbyists will look for 'nodes' in the network. Nodes are people who have many connections and campaigns will target their efforts on that person because they will have the largest knock-on effect on the rest of the network.

From the point of view of epidemiology and disease management, we need to be aware of the connections between people and communities in order to be able to manage the spread of communicable diseases. Amazonian tribes avoiding contact with the global modern world have the occasional crossing of paths with members of neighbouring villages. They will then bump into someone a little closer to civilisation and eventually (although actually fairly quickly) someone will then

connect to the closest major city, then making the link from city to city across the planet. Thus, an outbreak of a virus can begin in a rural village in Africa and spread to downtown Tokyo and New York in only a few weeks, simply because statistically there are going to be a handful of people in every major city with a particularly short chain of physical connections to that village.



Networks is a topic that has the potential for some interesting problems, experiments and games in the future and it will be interesting to see how the students' study of this topic lends itself to them finding applications in other subjects.

28 Travelling a network

Travelling a network

Many practical problems, such as travel routes, that can be modelled by a network involve moving around a graph. To solve such problems you will need to know about a number of concepts to describe the different ways to travel a network.

- A **walk** is a connected sequence of the edges showing a route between vertices where the edges and vertices may be visited multiple times. When there is no ambiguity, a walk in a network diagram can be specified by listing the vertices visited on the walk.
For example, the network diagram opposite shows a walk in a forest. The forest tracks are the edges (shown in blue) and the places in the forest are the vertices. The red arrows trace out a walk in the forest and is stated as:
 $G1-B-F-G2-T-G2-F$
Note: A walk does not require all of its edges or vertices to be different.
- A **trail** is a walk with no repeated edges.
For example, the network diagram opposite shows a trail in the forest and is stated as:
 $G1-B-F-G2-T-W-B-G2$
Note: A trail has no repeated edges, however there are two repeated vertices (B and $G2$).
- A **path** is a walk with no repeated vertices.
Open paths start and finish at different vertices while closed paths start and finish at the same vertex. Closed paths are also called circuits.
For example, the network diagram opposite shows a path in the forest and is stated as:
 $G1-F-B-W-T-G2$
Note: A path has no repeated edges or vertices.

THE SCHOOL DENTIST

The school dentist will be at Shoalhaven High School on Monday 29 July 2109 until Friday 2 August 2019. This is an optional service. All services are free to children eligible through Medicare's Child Dental Benefits Schedule (CDBS). For more information and consent forms, contact Ms M Wood or Ms L Horgan at Shoalhaven High School.

The School Dentist

Bringing to you, by the time Care Mobile Dental Services

Do your parents struggle to find the time to take their child to the dentist?

We can help!

We bring our dentists to your school.

The School Dentist is a unique initiative that provides high quality, oral care, general consultation services to children aged 2-17.

Under the Child Dental Benefits Schedule (CDBS) funded by the Australian Federal Government, our services are at no cost to eligible students. The CDBS provides dental services to eligible children who are covered under the Medicare scheme up to a limit of \$1000 per student over a 12-month calendar year period.

However if some of your students are not covered under the scheme, our dental team can provide an oral examination, clean, scale and fluoride at a reduced price of \$99.00, the Medicare value of which is approximately \$185.00.

The School Dentist team has a team of experienced, experienced dentists with a keen desire to provide essential dental care to your students.

Call our team on 9723 0333 for more information

www.caredental.com.au | admin@caredental.com.au

The School Dentist

Bringing to you, by the time Care Mobile Dental Services

We provide comprehensive dental services

We will provide the following services to students upon receiving referral consent from their school:

- Dental health education
- Comprehensive oral examinations
- Clean, scale and fluoride application
- If required:
- Prescriptions, fillings, extractions, X-ray

What is the Child Dental Benefits Schedule?

This Scheme is administered by the Department of Human Services under Medicare and provides access to benefits for basic dental services to children aged 2-17 years.

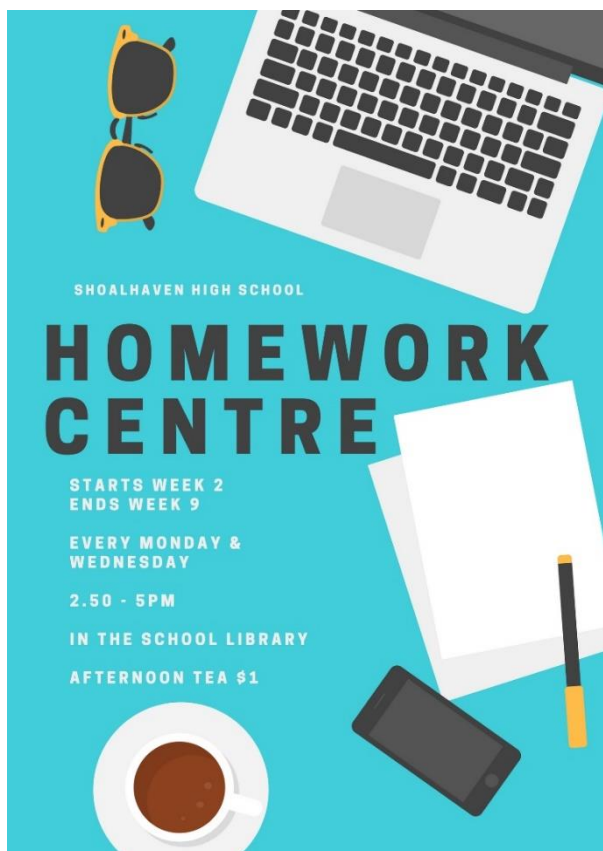
The state benefit entitlement is capped at \$1000 per child over a two-year calendar period. The Scheme is income tested for income thresholds of all households must be met in order to qualify for benefit. A one-time Australian Government payment.

To learn more about the CDBS, head to the Medicare website: www.humanservices.gov.au/health-professionals/school-dentist-child-dental-benefits-schedule/

Call our team on 9723 0333 for more information

www.caredental.com.au | admin@caredental.com.au

HOMWORK CENTRE



BREAKFAST CLUB

Breakfast Club is on before school each Thursday and Friday at the uniform shop. Anybody can come and it is run by staff volunteers.

Fruit is also available from Lisa in the Admin/Welfare Office at the bottom of A block.



2019 HSC TIMETABLE



[2019 HSC Timetable](#)

FEES AND EASTER RAFFLE WINNER

Thank you to all those parents/carers who have paid for school fees already this year. Your payments are assisting to offset many materials and resources used across the school by all students.



Congratulations to Gloria Williams, who has won the Easter Basket Draw.

Please continue to pay for your school fees, and all full payments of fees will go into the next draw for our Term 2 prize.

All current entries will remain in the draw for the next one....Good Luck!

SPORT NEWS

U14s Girls League Tag

On Wednesday the 5 June, the U14s Girls League Tag team competed at the 2019 Southern NSW Championships at the Bomaderry Sporting Complex. The girls had previously played last term in the district round where they played 3 games, coming away with 3 wins very convincingly. Unfortunately, on Wednesday, it was not the girl's day however, they should be extremely proud of their efforts against a strong Warilla High School side, finishing overall second in the Southern NSW area.

U14s Team: Madison I, Giorjet P, Tayha B, Dianna C, Maddison H, Jeneven W, Isabell H, Sarah R, Grace R, Jasmine B, Chloe B, Charlie B, Chloe H, Kirra J and Annabella P.



SHS UNIFORM SHOP



**OPEN DURING TERM
TIME:**

MONDAY AND THURSDAY

9AM - 1PM

EFTPOS OR CASH ONLY!

**STUDENT ASSISTANCE IS
AVAILABLE FOR ELIGIBLE
PARENTS**

Matilda Goodwin

Congratulations to Matilda G who has been selected to participate in a unique circus masterclass opportunity with Nouveau Cirque du Vietnam "A O Lang Pho". Matilda studies circus with Circus 35° South under the tutelage of Sharon & Geoff who are both teachers at Batemans Bay High School. This opportunity for talented students studying Circus Arts in NSW public schools is a collaboration between The Arts Unit and the Sydney Opera House.



Blake Gurney



<https://www.southcoastregister.com.au/story/6201599/gurney-ready-to-do-the-cockatoos-jersey-proud/?cs=204&fbclid=IwAR1bT-2QjS4kWNCP8I3WxUFNoairuDvcVUxwzwnnTv8Ttvorn7nkcx2mcEc>

Jack Atkins

Congratulations to Jack Atkins of Yr 8 who participated in the National Skeet Championships in Wagga Wagga recently, as part of the NSW State Team.

Jack is a very competitive clay target shooter in the Junior division and was exceptionally proud to represent the Shoalhaven and his State.

The State Team finished in third place, narrowly beaten by QLD and Victoria. Individually, Jack finished fourth in the Sub Junior category (under 15) which is an excellent result for his first National Championships.



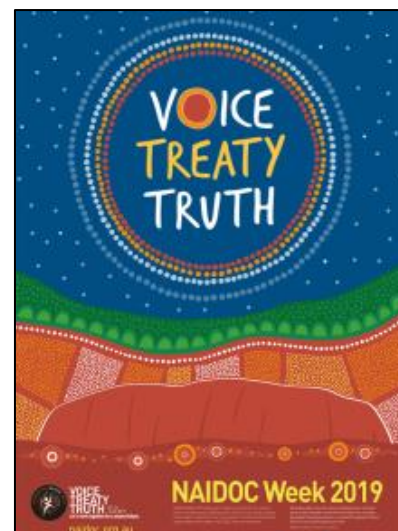
NAIDOC WEEK

NAIDOC Week celebrations are held across Australia each July to celebrate the history, culture and achievements of Aboriginal and Torres Strait Islander peoples. NAIDOC is celebrated not only in Indigenous communities, but by Australians from

all walks of life. The week is a great opportunity to participate in a range of activities and to support your local Aboriginal and Torres Strait Islander community.

Source: <https://www.naidoc.org.au/about/naidoc-week>

This year NAIDOC week is 7 July - 14 July.



**VOICE
TREATY
TRUTH**

07 - 14 JULY 2019

Let's work together
for a shared future.

The Staff and Students of
Shoalhaven High School

Cordially invite you to attend our N.A.I. D.O.C. Week

Assembly on Tuesday 2nd of July 2019

at 9 am for a 9.30 am start

In the school hall.

We invite you to stay for morning tea.

Please RSVP on 44218022 if you are able to attend.


We look forward to seeing you there.




BRING YOUR OWN TECHNOLOGY (BYOT)


Please have a read of the BYOT Policy/Guidelines on our website (Under Our school then BYOT) or click on the link below, for the expectations on how technology and mobile phones are used at our school, and the consequences for misuse of the technology.

[BYOT Policy](#)



Bring Your Own Technology






Positive Choices

- Students putting phones on silent and putting them away in bags or in the facility provided by teachers, if they are not required for the lesson. Other devices are also put away, if this is requested.
- Students following teacher instructions, so that they are using devices appropriately during the lesson.
- Students showing staff their work if they are using devices, whenever they are asked to do so during the course of the lesson.

The following are examples of positive uses for devices in lessons that your teachers may access in classes:

- research activities which involve the use of internet access.
- note taking, video making for projects and assessments.
- photographing notifications of tasks and work not completed on boards.
- recording the progress of work in practical classes.
- using the calendar to create homework / due date entries/ excursion/ test notifications – student diary/ organiser.
- timekeeping/ stop watch for speeches/calculator.
- using SRN, One Note, Kahoot or other appropriate software to allow student responses/ organise tasks.
- teacher directed quizzes.
- dictionary/ thesaurus work.
- recording and storage for multimedia tasks.
- submission of tasks via email.
- accessing ABC iView, educational apps.
- recording information whilst on excursions.



Negative Choices

- Students not putting phones in bags, the facility which may be provided by staff in classes or in a place acceptable to staff, and not turning them off, if they are not being used for the lesson.
- Students not having 'lids ajar' on laptops, or not removing earphones when requested to do so by staff.
- Students refusing to use technology in accordance with teacher instructions.

This includes:

- Students texting or calling others on mobiles during class time.
- Students refusing to show staff their work on the technology.
- Students failing to make a reasonable effort with the technology to complete work.
- Students passing mobiles to others for inappropriate use or not handing phones to staff before going to the toilet.
- Students playing games on their device during lessons.
- Students using technology to bully, harass, offend or threaten others – includes illegal filming/ photography = serious offence!

Being able to use technology in class is the teacher's choice, not the student's choice! There are consequences for any student who breaks the rules.

UNIFORM POLICY

The Shoalhaven High School Uniform Policy is found on our School website under 'Our School' or click on the link

[2018 Uniform Policy](#)

ANTI-BULLYING PLAN

The Shoalhaven High School Anti-bullying Plan is found on our School website under 'Our School' or click on the link


[Anti-bullying Plan](#)



STUDENT TIMETABLES

Students now have access to view their timetable for 2018 online via the Student/Parent Sentral Portal.

To access, please visit <https://web2.shoalhaven-h.schools.nsw.edu.au/portal/login> then log in with your DoE username and password.



Shoalhaven High School

Student and Parent Portal

Please enter your username and password below

[Forgot Password?](#)



Education &
Communities

Public Schools NSW

Compulsory School Attendance

Information for parents

Education for your child is important and regular attendance at school is essential for your child to achieve their educational best and increase their career and life options. NSW public schools work in partnership with parents to encourage and support regular attendance of children and young people. When your child attends school every day, learning becomes easier and your child will build and maintain friendships with other children.

What are my legal responsibilities?

Education in New South Wales is compulsory for all children between the ages of six years and below the minimum school leaving age. The *Education Act 1990* requires that parents ensure their children of compulsory school age are enrolled at, and regularly attend school, or, are registered with the Board of Studies, Teaching and Educational Standards for homeschooling.

Once enrolled, children are required to attend school each day it is open for students.

The importance of arriving on time

Arriving at school and class on time

- ensures that students do not miss out on important learning activities scheduled early in the day
- helps students learn the importance of punctuality and routine
- gives students time to greet their friends before class
- reduces classroom disruption.

Lateness is recorded as a partial absence and must be explained by parents.

What if my child has to be away from school?

On occasion, your child may need to be absent from school. Justified reasons for student absences may include

- being sick, or having an infectious disease
- having an unavoidable medical appointment
- being required to attend a recognised religious holiday
- exceptional or urgent family circumstance e.g. attending a funeral.

Following an absence from school you must ensure that within **7** days you provide your child's school with a verbal or written explanation for the absence. However, if the school has not received an explanation from you within **2** days, the school may contact you to discuss the absence.

Principals may decline to accept an explanation that you have provided if they do not believe the absence is in the best interest of your child. In these circumstances your child's absence would be recorded as unjustified. When this happens the principal will discuss their decision with you and the reasons why.

Principals may request medical certificates or other documentation when frequent or long term absences are explained as being due to illness. Principals may also seek parental permission to speak with medical specialists to obtain information to collaboratively develop a health care plan to support your child. If the request is denied, the principal can record the absences as unjustified.

Travel

Families are encouraged to travel during school holidays. If travel during school term is necessary, discuss this with your child's school principal. An *Application for Extended Leave* may need to be completed. Absences relating to travel will be marked as leave on the roll and therefore contribute to your child's total absences for the year.

In some circumstances students may be eligible to enrol in distance education for travel periods over 50 school days. This should be discussed with your child's school principal.





My child won't go to school. What should I do?

You should contact the principal as soon as possible to discuss the issue and ask for help. Strategies to help improve attendance may include a referral to the school's learning and support team or linking your child with appropriate support networks. The principal may seek further support from the Home School Liaison Program to develop an Attendance Improvement Plan.

What might happen if my child continues to have unacceptable absences?

It is important to understand that the Department of Education and may be required to take further action where children of compulsory school age have recurring numbers of unexplained or unjustified absences from school.

Some of the following actions may be undertaken:

- **Compulsory Schooling Conferences**
You may be asked, along with your child, to attend a Compulsory Schooling Conference. The conference will help to identify the supports your child may need to have in place so they attend school regularly. The school, parents and agencies will work together to develop an agreed plan (known as Undertakings) to support your child's attendance at school.
- **Application to the Children's Court**
- Compulsory Schooling Order

If your child's attendance at school remains unsatisfactory the Department may apply to the Children's Court for a *Compulsory Schooling Order*.

The Children's Court magistrate may order a Compulsory Schooling Conference to be convened.

- **Prosecution in the Local Court**
School and Department staff remain committed to working in partnership with you to address the issues which are preventing your child's full participation at school. In circumstances where a breach of compulsory schooling orders occurs further action may be taken against a parent in the Local Court. The result of court action can be the imposition of a community service order or a fine.

What age can my child leave school?

All New South Wales students must complete Year 10 or its equivalent. After Year 10, and up until they reach 17 years of age, there are a range of flexible options for students to complete their schooling.

Working in Partnership

The Department of Education recognises that working collaboratively with students and their families is the best way to support the regular attendance of students at school.

We look forward to working in partnership with you to support your child to fulfil their life opportunities.

If a student misses as little as 8 days in a school term, by the end of primary school they'll have missed over a year of school.

Further information regarding school attendance can be obtained from the following websites

Policy, information and brochures

<http://www.schools.nsw.edu.au/studentsupport/programs/attendance.php>

The school leaving age

<http://www.schools.nsw.edu.au/leaving-school/index.php>

For further advice contact

Educational services

T 131 536

Learning and Engagement

Student Engagement and
Interagency Partnerships

T 9244 5356

www.dec.nsw.gov.au

Do you need an interpreter?

If you need help with English and would like further information please call the Telephone Interpreter Service on **131 450** and ask for an interpreter in your language. The operator will get an interpreter on the line to assist you with your conversation. You will not be charged for this service.

©May 2015

NSW Department of Education

COMMUNITY NEWS

ST JOHN'S SCHOOL PLAY-

Spontaneous Human Combustion

A not-to-be-missed quality production, featuring St John's outstanding performers delivering Daniel Evans' play about defiance and resilience.

The play celebrates human spirit, exploring how we cope and change when faced with life's challenges, learning from not just our experiences but from those who have gone before us.

Showtimes include;

Sunday 21 July, 2019 - 2pm

Wednesday 24 July, 2019- 2pm

Thursday 25 July, 2019 - 7:30pm

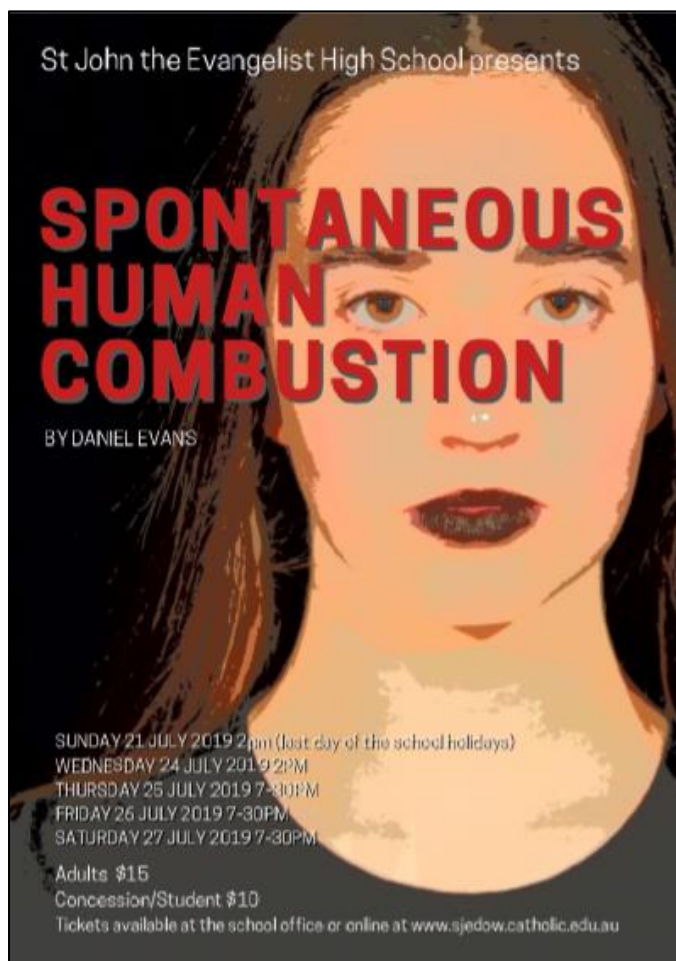
Friday 26 July, 2019 - 7:30pm

Saturday 27 July, 2019 - 7:30pm

Tickets on Sale-

Adults \$15 Concession/Student \$10

Tickets may be purchased from St John's school office or online at www.sjedow.catholic.edu.au



JERVIS BAY MARITIME MUSEUM



Photo competition

Attention photographers. Get snapping! Enter our Photographic Competition!

Jervis Bay Maritime Museum, celebrating National Science Week, is holding a photographic competition with the theme, Our Moon. Be creative in your interpretation of the theme in any photographic style.

- Two sections: Open and School Students.
- Prizes will be awarded.
- Entry fee: \$10 Open, \$5 School Students.
- Submit photos in digital form by July 1.

For more information email:

enquiries@jbmm.asn.au

Shoalhaven High School will, as a service to parents, advertise community news which may be of interest. SHS does not necessarily endorse or sponsor the events and accepts no responsibility to the management or organisation.