

# Shoalhaven High School - Newsletter

Respect, Responsibility, Safety and Participation



Park Road Nowra East NSW 2541 T 4421 8022 F 4423 0272 E [shoalhaven-h.school@det.nsw.edu.au](mailto:shoalhaven-h.school@det.nsw.edu.au)  
[shoalhaven-h.schools.nsw.gov.au](http://shoalhaven-h.schools.nsw.gov.au) [www.facebook.com/shoalhavenhigh](http://www.facebook.com/shoalhavenhigh)

2021 Term 4 Week 8

Friday 26 November 2021

## COMING EVENTS

29 November – Check-In Assessment continues  
9 December – Awards Day  
9 December – Year 12 Formal  
10 December – Year 12 Graduation Assembly  
13 December – Reports published  
16 December – Final day for students  
28 January 2022 - Staff return for 2022 school year  
1 February 2022– Year 7, 11 and 12 return for 2022 school year  
2 February 2022 - Years 8,9 and 10 return for 2022 school year

## PRINCIPAL'S MESSAGE

The 2021 school year is drawing to a close and what a year it has been. As we reflect on the year that has just passed, I wish to thank all our community members for their ongoing support of Shoalhaven High School. As a community we have been exposed to many things this year, things that have changed our perceptions, our organisational and operational structures. Throughout all these changes our wider school community has supported the school to ensure that our students' educational outcomes have not been adversely affected. The extended period of learning from home was difficult for all of us, and we as a school community have worked together, been resilient and dedicated to ensuring we continued to provide a quality education in a supportive environment for all our students. This was a challenge as restrictions grew tighter, mandatory vaccinations for all staff introduced and as we returned to face-to-face teaching and learning even tighter restrictions on school operations. This challenge was accepted by our staff, our students and our community and as a team we came out the other side stronger and more determined to make 2022 as successful as it can be. So once again to the SHS staff, students, parents/carers and the wider community, thank you

for all your efforts and dedication to make 2021 a successful school year.

On Tuesday 23 November 2021 we welcomed our new 2022 Year 7 cohort to our school as we held our Transition Day. All the students had a fantastic time and special thank you to Ms Aird and Ms Rosskelly for their organisation and to our staff who delivered lessons to our new students and kept them engaged for the day. We look forward to seeing them return in 2022.

With the thank you at the start of the newsletter, it is time for some forward thinking. As we draw to the close of 2021 there are a few key dates to keep in our diaries:

Thursday 9 December, Week 10 - Awards Day will be held in the school hall. All students receiving awards will be invited as well as parents of award recipients who are fully vaccinated will be welcome on site to attend the assembly. For families who cannot make the assembly it will be recorded and posted to our social media sites after the conclusion of the ceremony. Year 12 will also celebrate their formal during the evening of the 9 December 2021.

Friday 10 December, Week 10 - Year 12 will celebrate their graduation at our annual graduation ceremony. This will be held on site in the hall commencing at 9:30am. Year 12 students, siblings and fully vaccinated parents and carers will also be permitted to attend the graduation ceremony.

Monday 13 December, Week 11 - All school reports will be published to the Sentral parent portal and those families who request printed copies these will be handed to students as well. All year groups will also have merit assemblies to acknowledge the achievements of their peers.

The last day for our students and staff is on Thursday 16 December 2021.

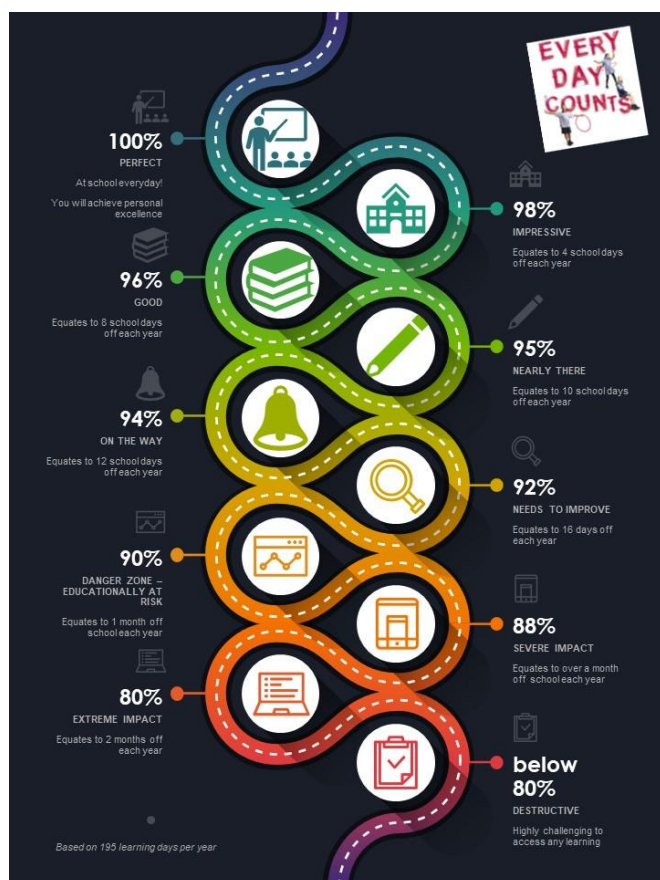
The start of the 2022 school year will commence with 2 Staff Development Days. Staff will return on the 28 and 31 January for these days. Years 7, 11 and

12 will return to school Tuesday 1 February. Years 8,9,10 will return on Wednesday 2 February. We will also communicate further organisational structures as COVID restrictions ease early in the 2022 school year. Thanks again for all your ongoing support of our school and have a Merry Christmas and safe and relaxing break and we welcome everybody back in 2022.

**Damian Rees**  
**Executive Principal**  
**Connected Communities**  
**Shoalhaven High School**



## ATTENDANCE



## SCHOOL UNIFORM

The school instituted changes to our Uniform Policy in 2020.

The new policy is on our SHS website (under About our school -> Rules and policies -> Uniform Policy) or from the following link:

[School Uniform Policy](#)

Please be aware that wearing school uniform is a Work, Health and Safety issue and part of our school rules.

Further information is available from the following link:

[Uniform Guidelines](#)

We encourage everyone to read the policy and guidelines and support our school by ensuring students wear school uniform every school day.

## 2021 CHECK IN ASSESSMENT

Some students are still taking part in the NSW Department of Education Check-in assessments. These assessments are administered online and are for students in Years 7 to 9. There are two assessments:

- Reading
- Numeracy

Each assessment is designed to be between 40 to 50 multiple choice questions. Students should be reminded to bring earphones from home and no smart phones or watches will be allowed during assessment times.





## GOLDEN PINEAPPLE COMPETITION

The winner of the P&C Golden Pineapple Treasure Hunt is John Paterson of Year 9.

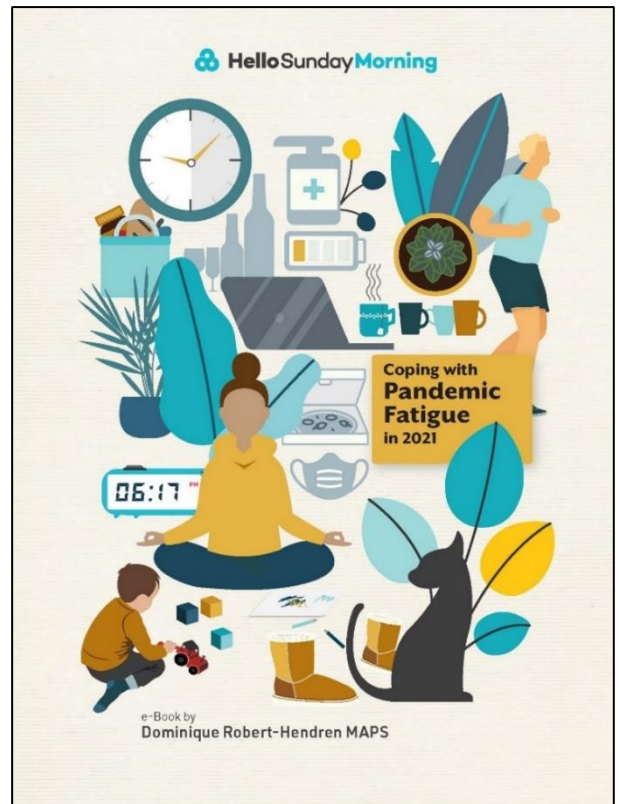
Congratulations from Shoalhaven High School's Parents and Carers Committee, Mr Morrissey and Mr Kleindeist.



## WELLBEING NEWS

See the link below for some strategies with coping with pandemic fatigue.

[Coping with Pandemic Fatigue2021](#)



## IM REMEMBRANCE DAY

7M made some poppies for Remembrance Day.





Did you know our school Library has an Instagram page?

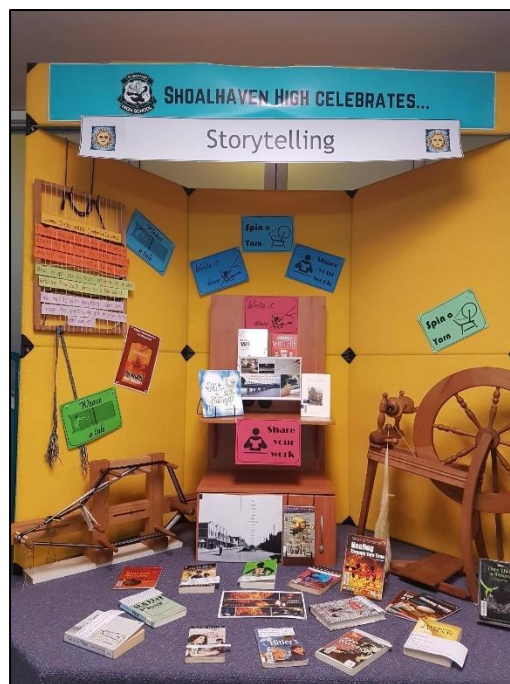
Head on over [to https://instagram.com/shoalibrary/](https://instagram.com/shoalibrary/) , scan the QR code attached or search up shoalibrary and give it a follow.

Keep up to date with great reads and library events.



The Library has remained open during all four breaks this term, so all students have a chance to borrow, return or just relax in the comfy chairs. Computers are still available for games during first half of the long break and for schoolwork during all the breaks. We can't complete jigsaws now but there are some paper-based activities, like Origami, Word Searches and very long Dot-to-dots.

Our current display is called Storytelling. We have displayed several books together with their “sizzling starts”, our 2 Shoalhaven High teachers’ published books, books for the budding writers and some craft equipment. All of which may encourage you to ‘spin a yarn’ or ‘weave a tale’ of your own.





## IN THE FRAME

In exciting news, our Shoalhaven High School writers have enjoyed success in the local SSPAN Young Writer's Award. This year's competition asked young people to explore the theme, 'In the Frame'. Our students took to the task with enthusiasm, approaching the topic from myriad directions.

We are proud to announce that in the category of Junior Short Story, SHS dominated the podium. The winner was Crystal C while Kiara E and Kenneth L took out second and third place respectively.

Not to be outdone, the winner in the Senior Short Story category was our very own Alexis C.

Meanwhile, proving that SHS students are strong across the arts, the winner of the cover design competition for 2021 was Liana C.



Cover design? I hear you ask. Yes, all entries in the SSPAN writing competition in both 2020 and 2021 have been collected and published in an anthology which will be available for purchase for \$10.00 with all profits going towards the cost of running the competition in the future. And in case all the aforementioned success wasn't enough, all art work inside the anthology has been created by our very talented SHS artists.

## JUNIOR IM

Junior IM enjoying a lovely afternoon at the farm with the horses.





## YEAR 11 ART

Year 11 are back and working on their incredible Modernist self-portraits. These works are an insight into their thoughts, feelings and emotions of life during COVID.

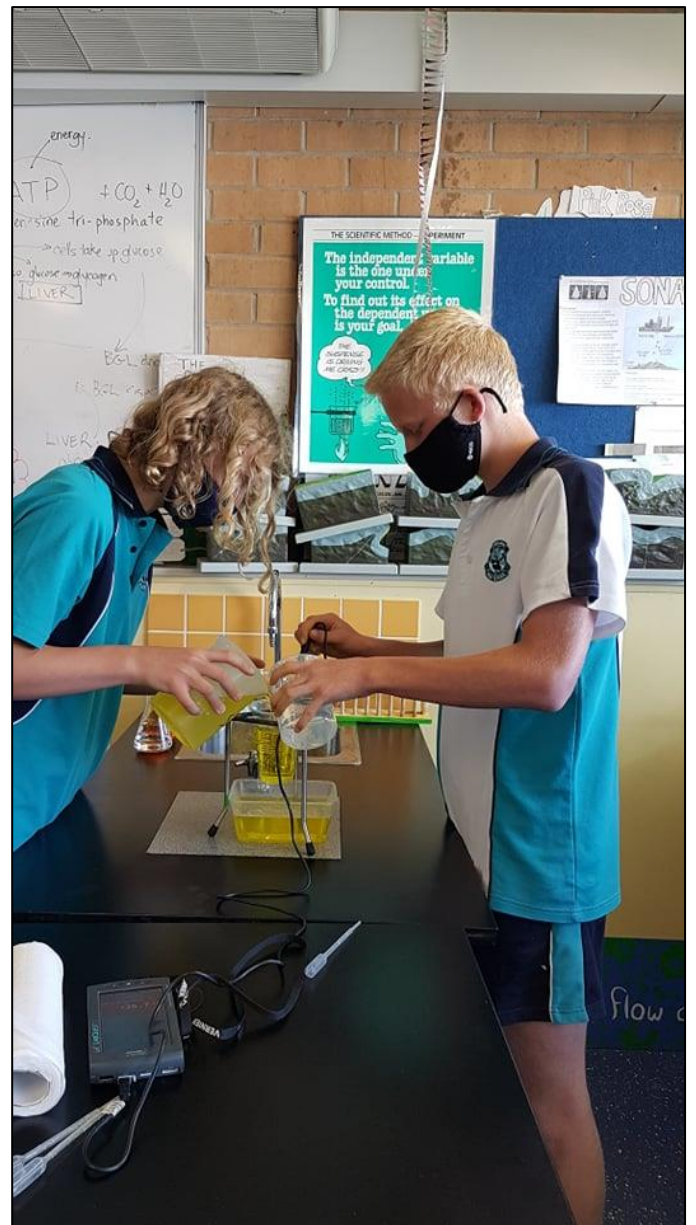
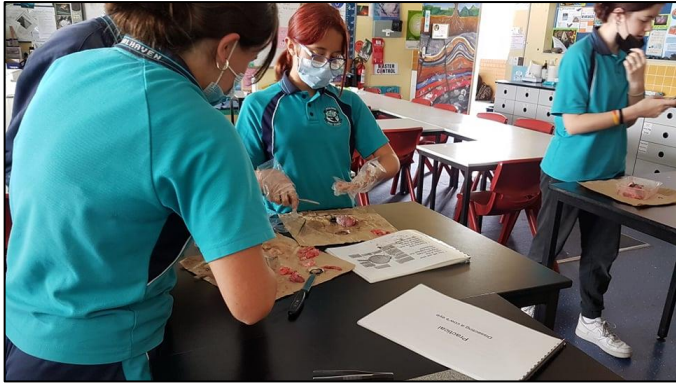






## 9K SCIENCE

9K Science have been dissecting eyes and learning about homeostasis by keeping Homer alive





## MRS FOX'S HORSES

Students enjoyed the visit from the Fox's horses.



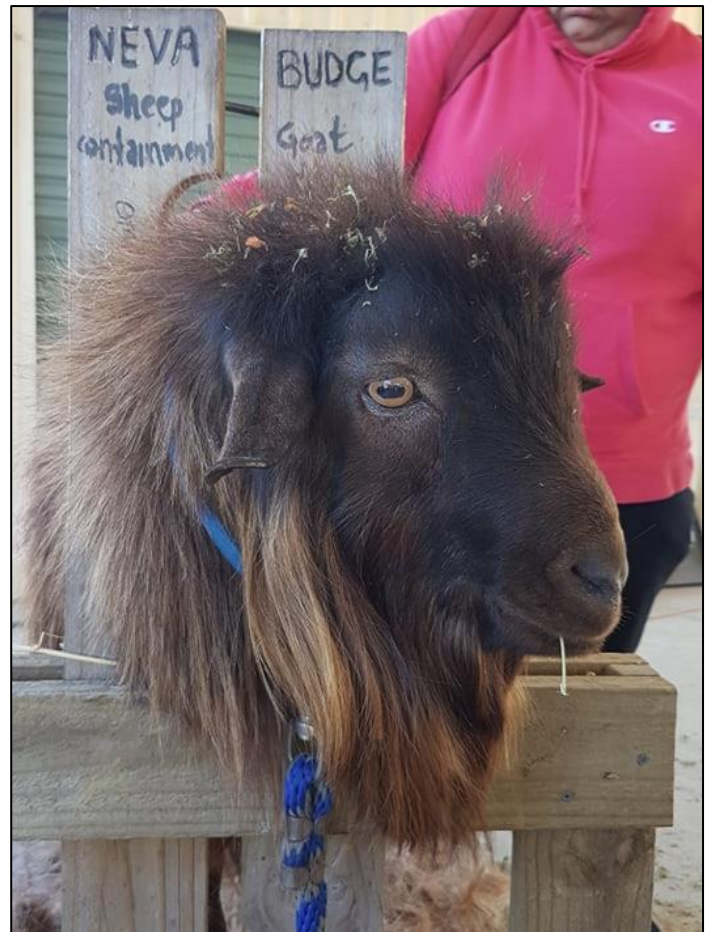
## YEAR 11 BIOLOGY

Year 11 Biology students dissecting flowers.



## MILO

Milo having a trim for summer



## YEAR 9 AND 10 AGRICULTURE

Year 9 and 10 Agriculture students have been working hard to plant out the new native and protea cut flower enterprise at the farm.





## AU1 ART

Visual Arts lessons with AU1.



Respect, Responsibility, Safety & Participation



## 7OWLS

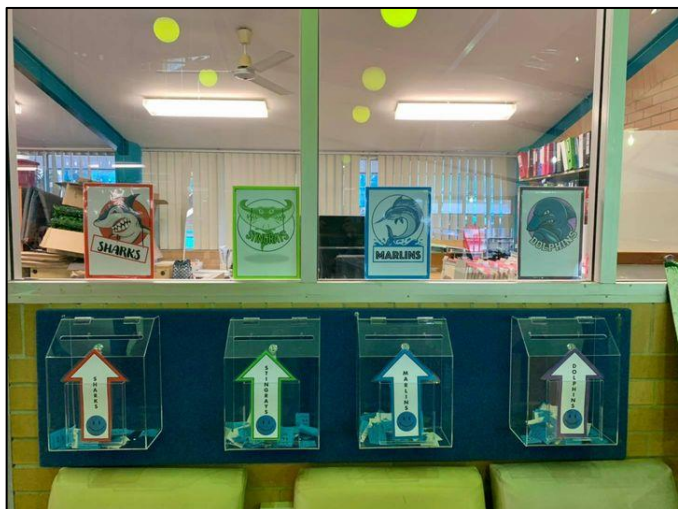
The 7 Owls have been learning about North America and the Plains Indians in HSIE this term.

This week they constructed tipis out of calico, skewers, clay and twine. We looked at the Native American symbols and drew those on the calico and then threaded the twine through holes in the material to tie each side together. Teamwork was required to make the structure nice and stable. They turned out awesome. Go Year 7!



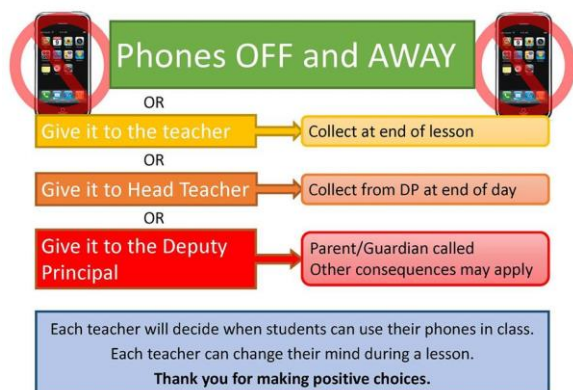
## NEW BLUE SMILEY BOXES

As the end of the year approaches, remember to keep popping your smileys in your house box to get that end of year reward!



## PHONES OFF AND AWAY

Shoalhaven High School has updated its rules for student use of mobile phones. Students have been given several weeks of advance notice by the Principal Mr Rees and staff, so compliance is expected from students.



## HOMEWORK CENTRE

**Shoalhaven High School**  
**Homework Centre**

Our Homework Centre is back on for 2021!  
All of our students are welcome.  
What you need to know:

- It's on Monday and Wednesday
- From 3pm - 5pm
- It's in the Library
- \$1 for afternoon tea - cake and a juice or hot chocolate
- We have teachers here to help you with your study, homework and assignments
- You can use the computers and printer
- You can access our book collections for research

## BREAKFAST CLUB

Breakfast Club is on Tuesday and Friday. It is held at the Uniform Shop. Come and say hi and grab a cheese toast and chocolate milk.







## BRING YOUR OWN TECHNOLOGY (BYOT)

Please have a read of the BYOT Policy/Guidelines on our website (Under Our school then BYOT) or click on the link below, for the expectations on how technology and mobile phones are used at our school, and the consequences for misuse of the technology.

### [BYOT Policy](#)



## Bring Your Own Technology




### Positive Choices

- Students putting phones on silent and putting them away in bags or in the facility provided by teachers, if they are not required for the lesson. Other devices are also put away, if this is requested.
- Students following teacher instructions, so that they are using devices appropriately during the lesson.
- Students showing staff their work if they are using devices, whenever they are asked to do so during the course of the lesson.

The following are examples of positive uses for devices in lessons that your teachers may access in classes:

- research activities which involve the use of internet access.
- note taking, video making for projects and assessments.
- photographing notifications of tasks and work not completed on boards.
- recording the progress of work in practical classes.
- using the calendar to create homework / due date entries/ excursion/ test notifications – student diary/ organiser.
- timekeeping/ stop watch for speeches/ calculator.
- using SRN, One Note, Kahoot or other appropriate software to allow student responses/ organise tasks.
- teacher directed quizzes.
- dictionary/ thesaurus work.
- recording and storage for multimedia tasks.
- submission of tasks via email.
- accessing ABC i view, educational apps.
- recording information whilst on excursions.



### Negative Choices

- Students not putting phones in bags, the facility which may be provided by staff in classes or in a place acceptable to staff, and not turning them off, if they are not being used for the lesson.
- Students not having "lids ajar" on laptops, or not removing earphones when requested to do so by staff.
- Students refusing to use technology in accordance with teacher instructions.

This includes:

- Students texting or calling others on mobiles during class time.
- Students refusing to show staff their work on the technology.
- Students failing to make a reasonable effort with the technology to complete work.
- Students passing mobiles to others for inappropriate use or not handing phones to staff before going to the toilet.
- Students playing games on their device during lessons.
- Students using technology to bully, harass, offend or threaten others – includes illegal filming/ photography = serious offence!

**Being able to use technology in class is the teacher's choice, not the student's choice! There are consequences for any student who breaks the rules.**

## UNIFORM POLICY

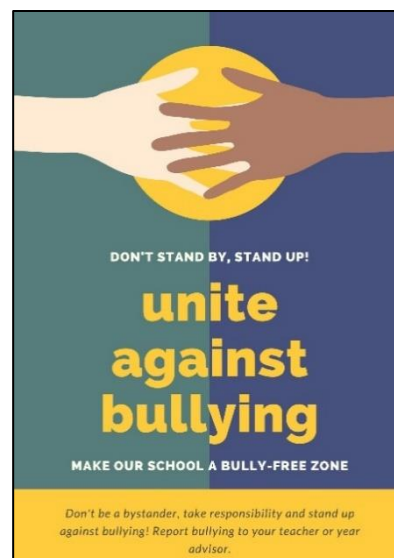
The Shoalhaven High School Uniform Policy is found on our School website under 'Our School' or click on the link

### [2020 Uniform Policy](#)

## ANTI-BULLYING PLAN

The Shoalhaven High School Anti-bullying Plan is found on our School website under 'Our School' or click on the link

### [Anti-bullying Plan](#)




## STUDENT TIMETABLES

Students now have access to view their timetable for 2021 online via the Student/Parent Sentral Portal.

To access, please visit

<https://shoalhavenhs.sentral.com.au/portal/> then log in with your DoE username and password.



### Shoalhaven High School

Student and Parent Portal

Please enter your username and password below

[Forgot Password?](#)



Dear Parents/Guardians,

Due to the current COVID-19 disruptions, The Illawarra Shoalhaven Local Health District School Immunisation Program has been postponed this year with a plan to re-start the program in Term 1 2022.

**When students will be vaccinated?**

Clinics are currently getting rescheduled at your child's school for 2022. If your child is currently in year 7 or year 10 and has missed their school vaccine/s they will be caught up in 2022.

If your child is currently in year 8 or year 11 and did not complete their dose/s HPV and/or dTpa for year 8 and MenACWY for year 11, you will receive an SMS to arrange the vaccine with your GP or another immunisation provider.

**What parents/guardians should do?**

There is no need for parents/guardians who have given consent for their child who is currently in year 7 or 10 to take any action, except to:

- Contact the Public Health Unit on 4221 6700 (selecting option 2) to withdraw consent for HPV, dTpa or MenACWY vaccination if any of these vaccines have been given at the GPs
- Ensure that students with influenza-like symptoms do not attend school and are tested for COVID-19 as soon as possible

Should you require further information please contact your local Public Health Unit on 4221 6700 (selecting option 2) (8:30-5pm Monday to Friday).

More information on the school immunisation program

<https://www.health.nsw.gov.au/immunisation/Pages/schoolvaccination.aspx>

Yours sincerely,

Immunisation Team  
Public Health Unit

**Public Health Unit – Wollongong Office**

Illawarra Shoalhaven Local Health District

ABN 16 323 767 470

Locked Bag 9, Wollongong, NSW 2500

Tel (02) 1300 066 055 Fax (02) 4221 6759





Education &  
Communities

Public Schools NSW

## Compulsory School Attendance

Information for parents

Education for your child is important and regular attendance at school is essential for your child to achieve their educational best and increase their career and life options. NSW public schools work in partnership with parents to encourage and support regular attendance of children and young people. When your child attends school every day, learning becomes easier and your child will build and maintain friendships with other children.

### What are my legal responsibilities?

Education in New South Wales is compulsory for all children between the ages of six years and below the minimum school leaving age. The *Education Act 1990* requires that parents ensure their children of compulsory school age are enrolled at, and regularly attend school, or, are registered with the Board of Studies, Teaching and Educational Standards for homeschooling.

Once enrolled, children are required to attend school each day it is open for students.

### The importance of arriving on time

Arriving at school and class on time

- ensures that students do not miss out on important learning activities scheduled early in the day
- helps students learn the importance of punctuality and routine
- gives students time to greet their friends before class
- reduces classroom disruption.

Lateness is recorded as a partial absence and must be explained by parents.

### What if my child has to be away from school?

On occasion, your child may need to be absent from school. Justified reasons for student absences may include

- being sick, or having an infectious disease
- having an unavoidable medical appointment
- being required to attend a recognised religious holiday
- exceptional or urgent family circumstance e.g. attending a funeral.

Following an absence from school you must ensure that within **7** days you provide your child's school with a verbal or written explanation for the absence. However, if the school has not received an explanation from you within **2** days, the school may contact you to discuss the absence.

Principals may decline to accept an explanation that you have provided if they do not believe the absence is in the best interest of your child. In these circumstances your child's absence would be recorded as unjustified. When this happens the principal will discuss their decision with you and the reasons why.

Principals may request medical certificates or other documentation when frequent or long term absences are explained as being due to illness. Principals may also seek parental permission to speak with medical specialists to obtain information to collaboratively develop a health care plan to support your child. If the request is denied, the principal can record the absences as unjustified.

### Travel

Families are encouraged to travel during school holidays. If travel during school term is necessary, discuss this with your child's school principal. An *Application for Extended Leave* may need to be completed. Absences relating to travel will be marked as leave on the roll and therefore contribute to your child's total absences for the year.

In some circumstances students may be eligible to enrol in distance education for travel periods over 50 school days. This should be discussed with your child's school principal.





### **My child won't go to school. What should I do?**

You should contact the principal as soon as possible to discuss the issue and ask for help. Strategies to help improve attendance may include a referral to the school's learning and support team or linking your child with appropriate support networks. The principal may seek further support from the Home School Liaison Program to develop an Attendance Improvement Plan.

### **What might happen if my child continues to have unacceptable absences?**

It is important to understand that the Department of Education and may be required to take further action where children of compulsory school age have recurring numbers of unexplained or unjustified absences from school.

Some of the following actions may be undertaken:

- Compulsory Schooling Conferences

You may be asked, along with your child, to attend a Compulsory Schooling Conference. The conference will help to identify the supports your child may need to have in place so they attend school regularly. The school, parents and agencies will work together to develop an agreed plan (known as Undertakings) to support your child's attendance at school.

- Application to the Children's Court  
- Compulsory Schooling Order

If your child's attendance at school remains unsatisfactory the Department may apply to the Children's Court for a *Compulsory Schooling Order*.

The Children's Court magistrate may order a Compulsory Schooling Conference to be convened.

- Prosecution in the Local Court

School and Department staff remain committed to working in partnership with you to address the issues which are preventing your child's full participation at school. In circumstances where a breach of compulsory schooling orders occurs further action may be taken against a parent in the Local Court. The result of court action can be the imposition of a community service order or a fine.

### **What age can my child leave school?**

All New South Wales students must complete Year 10 or its equivalent. After Year 10, and up until they reach 17 years of age, there are a range of flexible options for students to complete their schooling.

### **Working in Partnership**

The Department of Education recognises that working collaboratively with students and their families is the best way to support the regular attendance of students at school.

We look forward to working in partnership with you to support your child to fulfil their life opportunities.

**If a student misses as little as 8 days in a school term, by the end of primary school they'll have missed over a year of school.**

Further information regarding school attendance can be obtained from the following websites

#### **Policy, information and brochures**

<http://www.schools.nsw.edu.au/studentsupport/programs/attendance.php>

#### **The school leaving age**

<http://www.schools.nsw.edu.au/leaving-school/index.php>

#### **For further advice contact**

Educational services

T 131 536

Learning and Engagement

Student Engagement and  
Interagency Partnerships

T 9244 5356

[www.dec.nsw.gov.au](http://www.dec.nsw.gov.au)

#### **Do you need an interpreter?**

If you need help with English and would like further information please call the Telephone Interpreter Service on **131 450** and ask for an interpreter in your language. The operator will get an interpreter on the line to assist you with your conversation. You will not be charged for this service.

©May 2015

NSW Department of Education





**!HYE The Youthie**

# YOUTHIE SCHOOL HOLIDAYS PROGRAM

**WEDNESDAY & THURSDAY  
JANUARY 12TH, 13TH, 19TH & 20TH**

**TIE-DYE WORKSHOP | 10 PIN BOWLING  
CHESS COMP | PUTT PUTT DAY | MOVIES  
SPORTS | MARIO KART TOURNAMENT  
LUNCH PROVIDED AT CENTRE**

**MASKS REQUIRED AT ALL TIMES**

EXCURSION PLACES LIMITED & PERMISSION SLIPS REQUIRED.  
FOR MORE INFORMATION CALL THE YOUTHIE ON 4422 1988,  
EMAIL US AT [admin@nowrayouthcentre.org.au](mailto:admin@nowrayouthcentre.org.au) OR FIND  
US ON [FACEBOOK.COM/NOWRAYOUTHIE](https://www.facebook.com/nowrayouthie)

PROGRAMS MADE POSSIBLE WITH FUNDING PROVIDED  
BY SHOALHAVEN EX-SERVICEMAN'S CLUB



**!HYE The Youthie**

# D&D Club

**STARTING FRIDAY 14th JAN  
FROM 5pm - 8:30pm  
For young people 10-17 yrs**

For more info call The Youthie on 4422 1988,  
email us at [admin@nowrayouthcentre.org.au](mailto:admin@nowrayouthcentre.org.au),  
or find us at [facebook.com/nowrayouthie](https://www.facebook.com/nowrayouthie)



## Free Shoalhaven Cycling Community Safety Event

**9am, Sunday 28 November 2021 | White Sands Park Huskisson**

Shoalhaven City Council in partnership with the Shoalhaven Bicycle Users Group is holding a free community event, encouraging everyone to get outside and experience the fun of bike riding in beautiful Jervis Bay. The event will also focus on safe cycling, safe cycling equipment and safe cycling behaviours.

Everyone is invited to White Sands Park at Huskisson where participants will ride together on an easy paced scenic return 12 kms coastal route from Huskisson to Plantation Point, Vincentia.

The ride will be guided and supervised by the Shoalhaven Bicycle Users Group (SBUG) who have qualified ride leaders.

**What you need to know?**

- Beginners welcome
- Free bike and helmet check by Shoalhaven Bicycle User Group (SBUG) members
- Suitable for mountain or road bikes
- All cyclists must wear a correctly fitted helmet and appropriate clothing/footwear
- Children under 14 years of age must be accompanied by an adult
- Free bike safety sample bag for all registered participants
- Participants should have their bike in good working order
- Bring a water bottle
- Guided by a trained Shoalhaven Bicycle Users Group Ride Leader

COVID safe measures will be in place and participants are reminded to follow current NSW Public Health Orders.

To register please call **Shoalhaven City Council's Road Safety Officer on 4429 3484.**

**Shoalhaven City Council**

For more information search 'Free Shoalhaven Cycling' on our website or call 1300 293 111.

[shoalhaven.nsw.gov.au](https://shoalhaven.nsw.gov.au) f @

Shoalhaven High School will, as a service to parents, advertise community news which may be of interest. SHS does not necessarily endorse or sponsor the events and accepts no responsibility to the management or organisation.